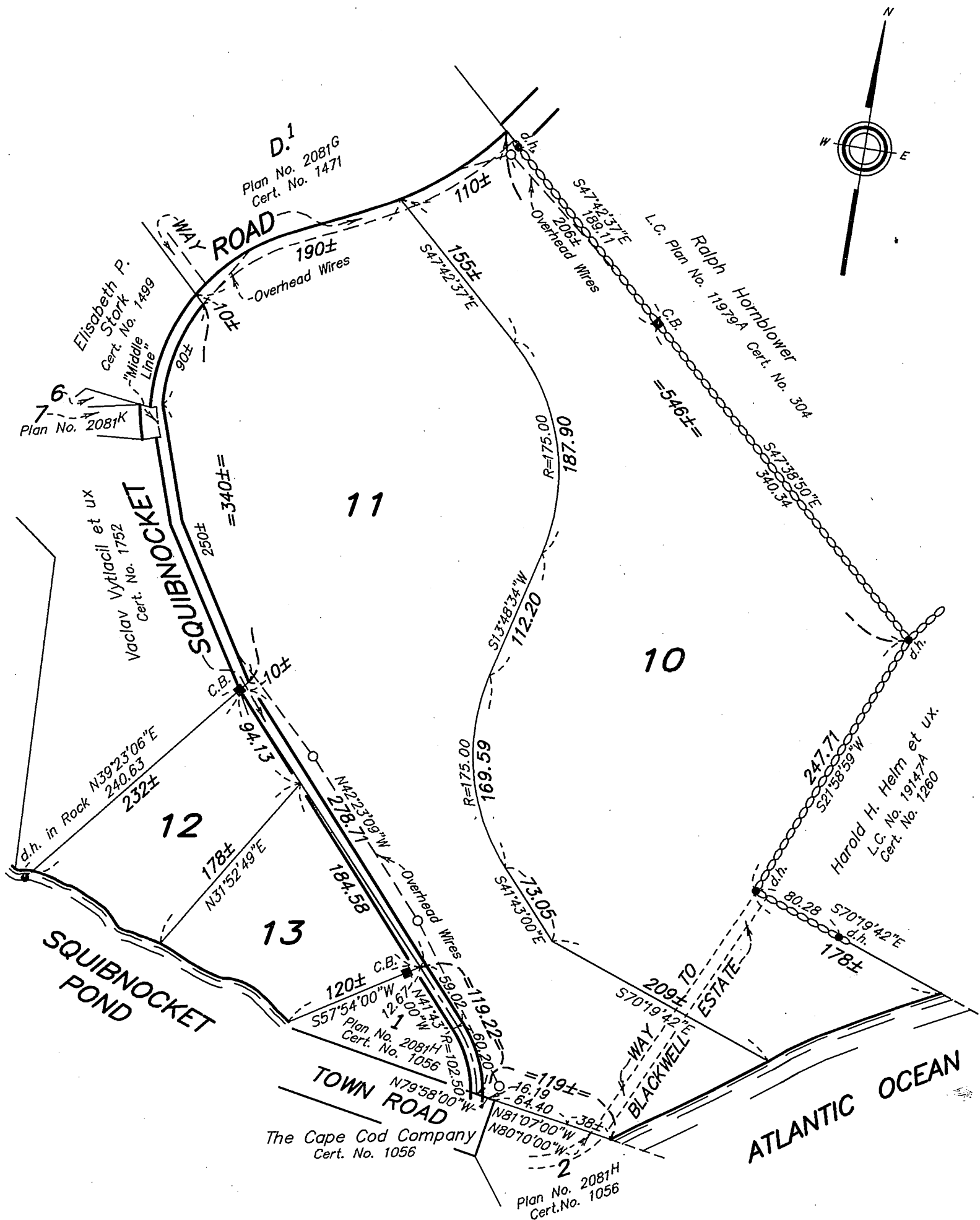


SUBDIVISION PLAN OF LAND IN CHILMARK

Vineyard Land Surveying, Inc., Surveyors

April 4, 1997

2081N



Subdivision of Lot 5
Shown on Plan 2081-I
Filed with Cert. of Title No. 1485
Registry District of Dukes County

Separate certificates of title may be issued for land
shown hereon as Lots 10 through 13
By the Court.

Charles E. Samuels
Recorder

SEP. 2, 1997

JMH-01XN

Copy of part of plan
filed in
LAND REGISTRATION OFFICE
AUG. 15, 1997
Scale of this plan 100 feet to an inch
Louis A. Moore, Engineer for Court