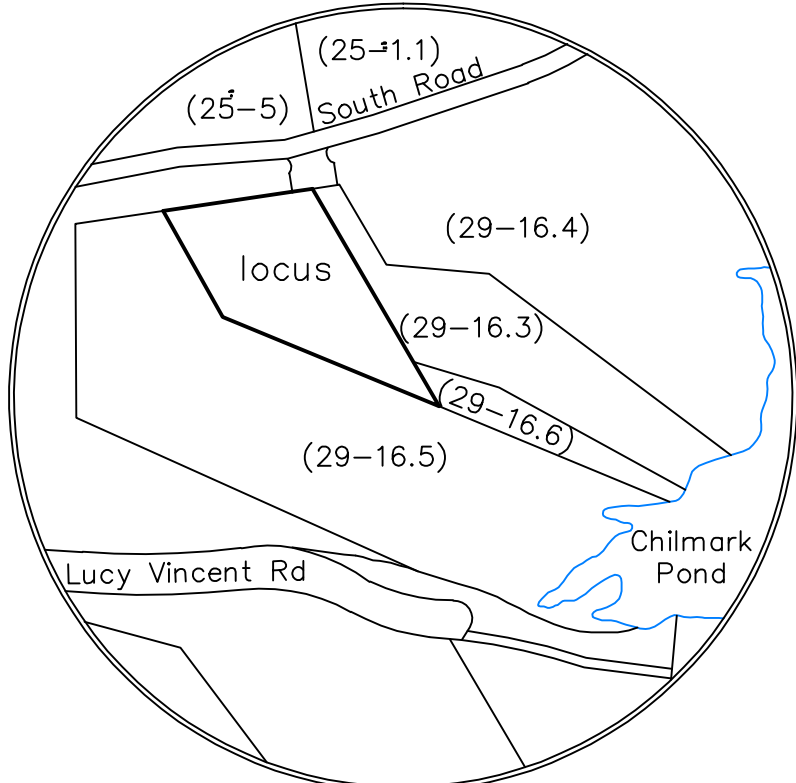


- Notes:
1. Wetlands delineated by Schofield, Barbini, and Hoehn, Inc.
 2. Stumps to be ground flush with grade
 3. All cuttings to be removed from the site for disposal
 4. Meadow to be maintained as shown through biannual mowing or as conditioned by the Chilmark Conservation Commission
 5. All cutting and pruning to be done by hand – no heavy equipment allowed other than stump grinder



Locus Map (no scale)

Landscape Management Plan Chilmark, Mass.

Prepared For

Rogers Lane Nominee Trust

Scale: 1" = 40' February 18, 2020 (June 30, 2020)

Schofield, Barbini & Hoehn Inc.
Land Surveying & Civil Engineering

12 Surveyor's Lane, Box 339
Vineyard Haven, Mass. 02568
508-693-2781
www.sbhinc.net
MV 3775

