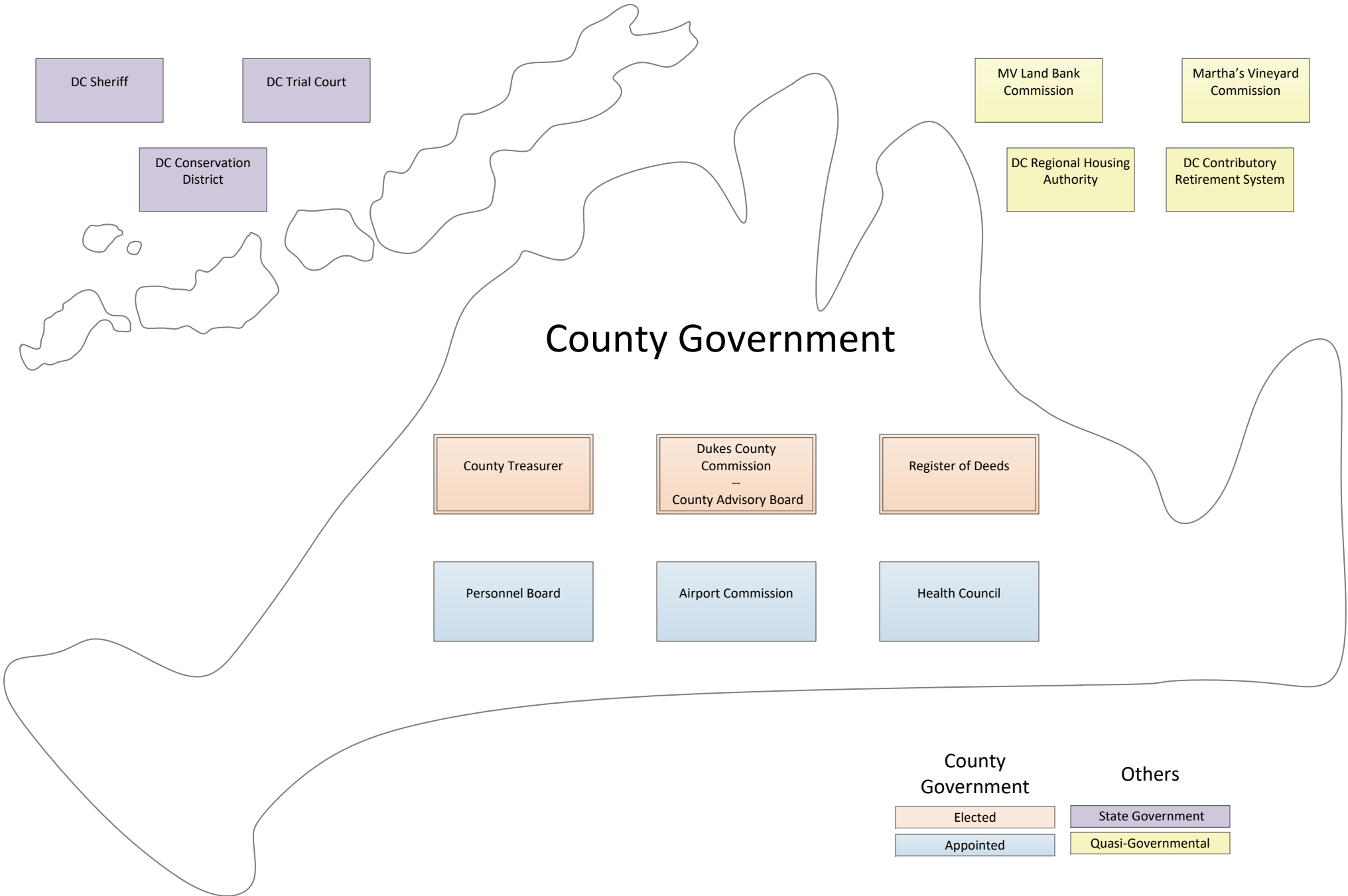


The County of Dukes County plays a critical role on Martha's Vineyard and Gosnold supporting its citizens by:

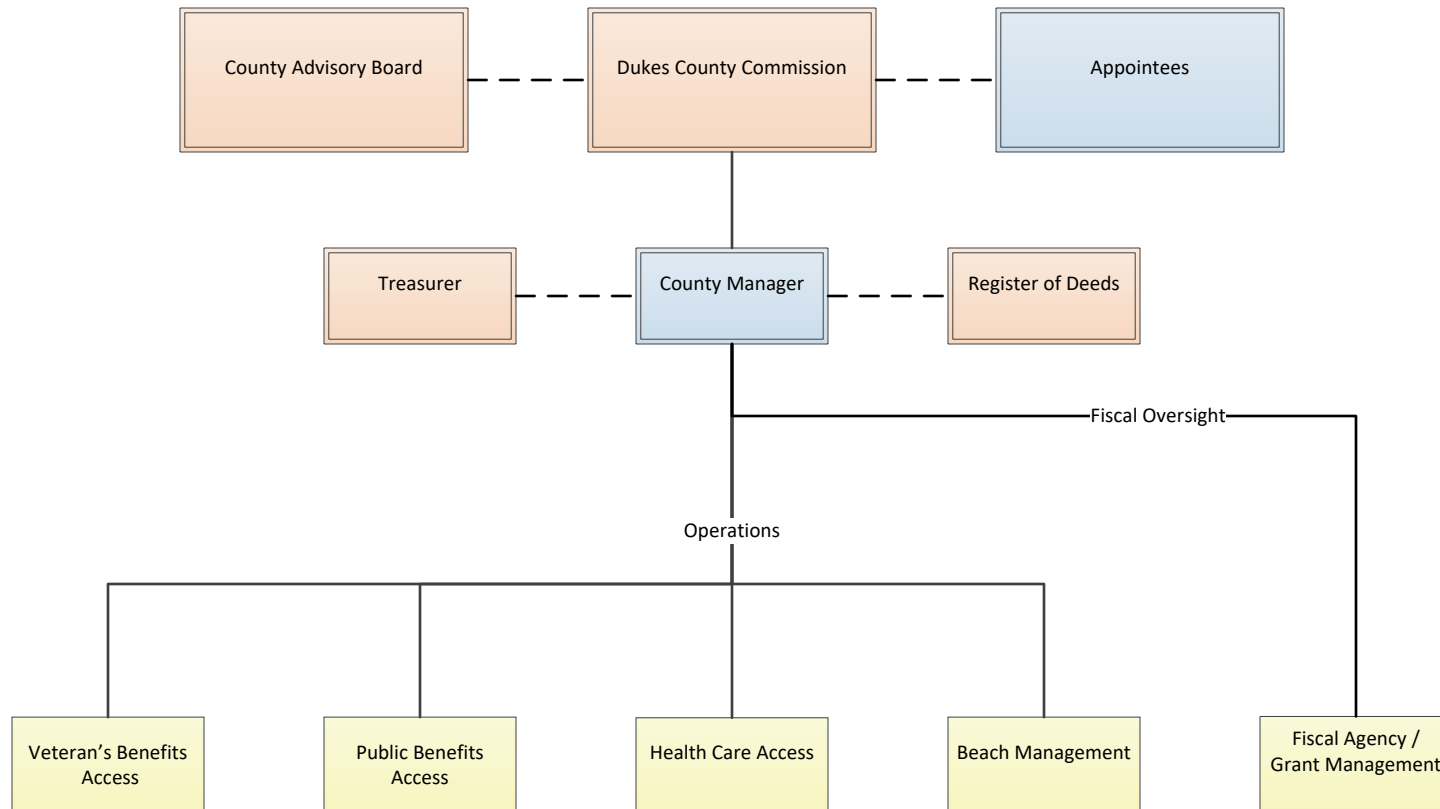
1. Providing an all-island approach to ensuring delivery of certain vital [governmental and non-governmental services](#);
2. Enhancing our ability to attract [federal and state funding](#) to the region and;
3. Appointing members to influential [island-wide bodies](#) who bring regional perspectives.

Dukes County Entities



Dukes County Commission

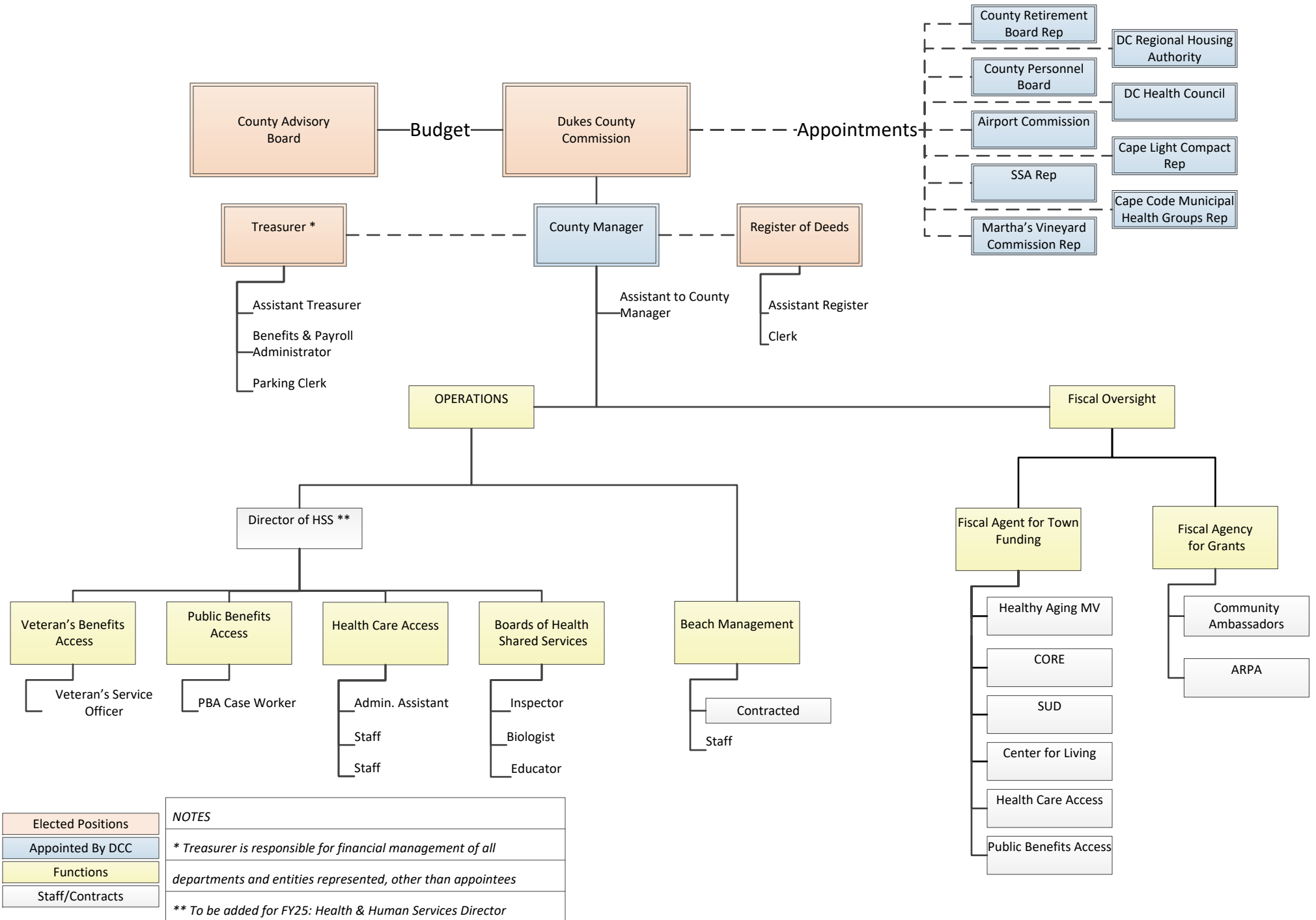
and related functions



Elected Positions
Appointed By DCC
Functions

Dukes County Commission

and related functions



Elected Positions	NOTES <i>* Treasurer is responsible for financial management of all departments and entities represented, other than appointees</i> <i>** To be added for FY25: Health & Human Services Director</i>
Appointed By DCC	
Functions	
Staff/Contracts	