

Architect
Keenan + Kenny Architects, Ltd.
189 Main Street
Falmouth, Massachusetts 02540
Tel. 508-540-0075

Civil Engineers
Vineyard Land Surveying & Engineering, Inc.
12 Coumoyer Road
W. Taubery, Massachusetts 02540
Tel. 508-528-0440

Structural Engineers
Coastal Engineering Company, Inc.
260 Cranberry Highway
Orleans, MA 02553
Tel. 508-295-0511

Mechanical, Electrical, Plumbing and Fire Protection Engineers
Giffin & Vary, Inc.
12 Kendrick Road
Wareham, Massachusetts 02571
Tel. 508-295-0050

Landscape Architect
T.L. Studio
35B North Main Street
Falmouth, Massachusetts 02540
Tel. 508-566-2185

Specifications Consultant
ARCHITX, LLC
5 Topsy Drive
Stafford Springs, CT 06076
Tel. 860-872-9627

Cost Estimating Services
Rider Levett Bucknall
Two Financial Center, Suite 810,
60 South Street
Boston, MA 02111
Tel. 617-737-9339

Code Consultant
JENSEN HUGHES
117 Metro Center Blvd
Warwick, Rhode Island 02886
Tel. 401-736-8992

Owner's Project Manager
CHA Consulting, Inc.
150 Baker Ave #205
Concord, MA 01742
Tel. 978-369-2890

NEW TRI-TOWN EMS HQ FOR THE TOWNS OF:
AQUINNAH, CHILMARK + WEST TISBURY
MIDDLE ROAD
CHILMARK, MASSACHUSETTS



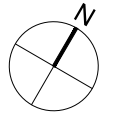
LAYOUT LEGEND

SYM	DESCRIPTION
ALIGN	ALIGN EDGES
FLUSH	FACES MEET AT FLUSH CONDITION
X-X"	DIMENSION
RX-X"	RADIUS
— —	BASELINE
—C—	CENTERLINE
F.O.B.	FACE OF BUILDING

MATERIALS LEGEND

[Pattern]	BITUMINOUS PAVEMENT
[Pattern]	CONCRETE PAVEMENT
[Pattern]	GRAVEL
[Pattern]	BOARDWALK
[Pattern]	RAIN GARDEN PLANTING
[Pattern]	PLANTING AREA

ALL DISTURBED AREAS THAT ARE NOT HARDSCAPE TO BE SEEDED WITH LAWN. LAWN MIX T.B.D.



TRAFFIC SIGN CHART / SEE PLAN FOR LOCATION

SIGN NUMBER	INSCRIPTION / CONTENT	SYMBOL
#1	TRI-TOWN EMS	-
#2	PUBLIC PARKING	-
#3	EMS PARKING ONLY	DIRECTIONAL ARROW

REVISIONS

NO.	DATE	DESCRIPTION

PROJECT NO. CHILMARK
ISSUED BY: TLS
ISSUED DATE: 2 DEC 2020
SHEET TITLE: MATERIALS AND LAYOUT PLAN - EMS HQ
SCALE: 1/16" = 1'-0"
DISCIPLINE: CATEGORY - SUB CATEGORY - SHEET

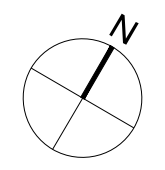
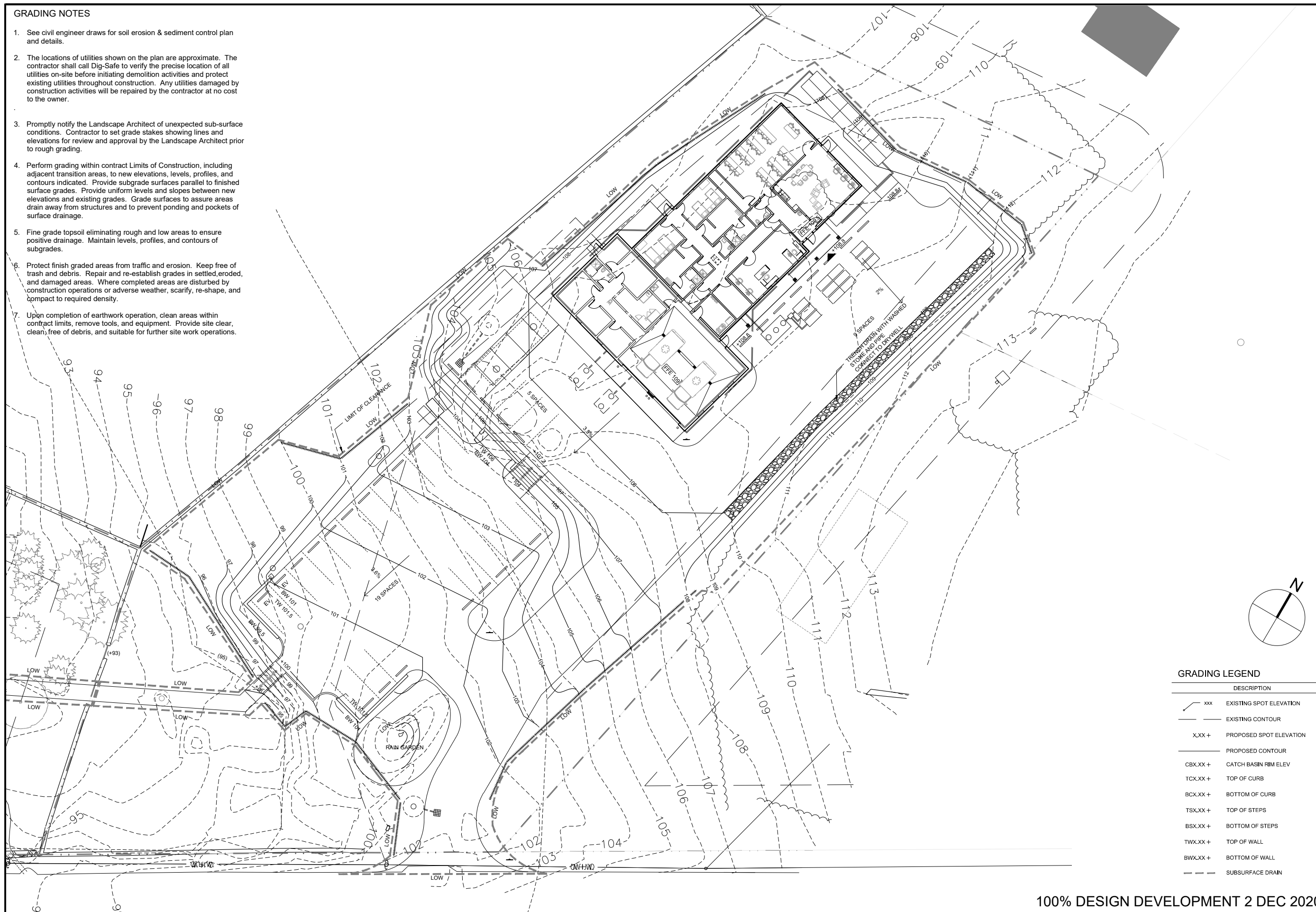
L1.0

100% DESIGN DEVELOPMENT 2 DEC 2020

MIDDLE COUNTY ROAD

GRADING NOTES

1. See civil engineer draws for soil erosion & sediment control plan and details.
2. The locations of utilities shown on the plan are approximate. The contractor shall call Dig-Safe to verify the precise location of all utilities on-site before initiating demolition activities and protect existing utilities throughout construction. Any utilities damaged by construction activities will be repaired by the contractor at no cost to the owner.
3. Promptly notify the Landscape Architect of unexpected sub-surface conditions. Contractor to set grade stakes showing lines and elevations for review and approval by the Landscape Architect prior to rough grading.
4. Perform grading within contract Limits of Construction, including adjacent transition areas, to new elevations, levels, profiles, and contours indicated. Provide subgrade surfaces parallel to finished surface grades. Provide uniform levels and slopes between new elevations and existing grades. Grade surfaces to assure areas drain away from structures and to prevent ponding and pockets of surface drainage.
5. Fine grade topsoil eliminating rough and low areas to ensure positive drainage. Maintain levels, profiles, and contours of subgrades.
6. Protect finish graded areas from traffic and erosion. Keep free of trash and debris. Repair and re-establish grades in settled, eroded, and damaged areas. Where completed areas are disturbed by construction operations or adverse weather, scarify, re-shape, and compact to required density.
7. Upon completion of earthwork operation, clean areas within contract limits, remove tools, and equipment. Provide site clear, clean, free of debris, and suitable for further site work operations.



GRADING LEGEND

DESCRIPTION	SYMBOL
EXISTING SPOT ELEVATION	xxx
EXISTING CONTOUR	--- (dashed line)
PROPOSED SPOT ELEVATION	X.XX +
PROPOSED CONTOUR	--- (solid line)
CATCH BASIN RIM ELEV	CBX.XX +
TOP OF CURB	TCX.XX +
BOTTOM OF CURB	BCX.XX +
TOP OF STEPS	TSX.XX +
BOTTOM OF STEPS	BSX.XX +
TOP OF WALL	TWX.XX +
BOTTOM OF WALL	BWX.XX +
SUBSURFACE DRAIN	--- (dashed line with cross-hatch)

100% DESIGN DEVELOPMENT 2 DEC 2020

Architect
Keenan + Kenny Architects, Ltd.
189 Main Street
Falmouth, Massachusetts 02540
Tel. 508-540-0075

Civil Engineers
Vineyard Land Surveying & Engineering, Inc.
12 Cournoyer Road
W. Taubery, Massachusetts 02540
Tel. 508-529-0440

Structural Engineers
Coastal Engineering Company, Inc.
260 Cranberry Highway
Orleans, MA 02553
Tel. 508-295-8511

Mechanical, Electrical, Plumbing and Fire Protection Engineers
Giffen & Vary, Inc.
12 Kendrick Road
Wareham, Massachusetts 02571
Tel. 508-295-0050

Landscape Architect
T.L. Studio
35B North Main Street
Falmouth, Massachusetts 02540
Tel. 508-566-2185

Specifications Consultant
ARCHITX, LLC
5 Topsy Drive
Stafford Springs, CT 06076
Tel. 860-872-9627

Cost Estimating Services
Rider Levett Bucknall
Two Financial Center, Suite 810,
60 South Street
Boston, MA 02111
Tel. 617-737-9339

Code Consultant
JENSEN HUGHES
117 Metro Center Blvd
Warwick, Rhode Island 02886
Tel. 401-736-8992

Owner's Project Manager
CHA Consulting, Inc.
150 Baker Ave #205
Concord, MA 01742
Tel. 978-369-2890

NEW TRI-TOWN EMS HQ FOR THE TOWNS OF:
AQUINNAH, CHILMARK + WEST TISBURY
MIDDLE ROAD
CHILMARK, MASSACHUSETTS



REVISIONS

NO.	DATE	DESCRIPTION

STAMP

PROJECT NO.	ISSUED BY:
CHILMARK	TLS
ISSUED DATE:	
2 DEC 2020	
SHEET TITLE:	
GRADING PLAN	

SCALE: 1/16" = 1'-0"
DISCIPLINE - CATEGORY - SUB CATEGORY - SHEET

L2.0

PLANTING LIST - EMS

Deciduous Trees Large

Sym.	Qty.	Botanical Name	Common Name	Spacing	Size	Root
	2	Gladiolus triacanthos	Honeylocust	As Noted	2"-2 1/2" cal	B&B
	7	Liriodendron tulipifera	Tulip poplar	As Noted	2"-2 1/2" cal	B&B

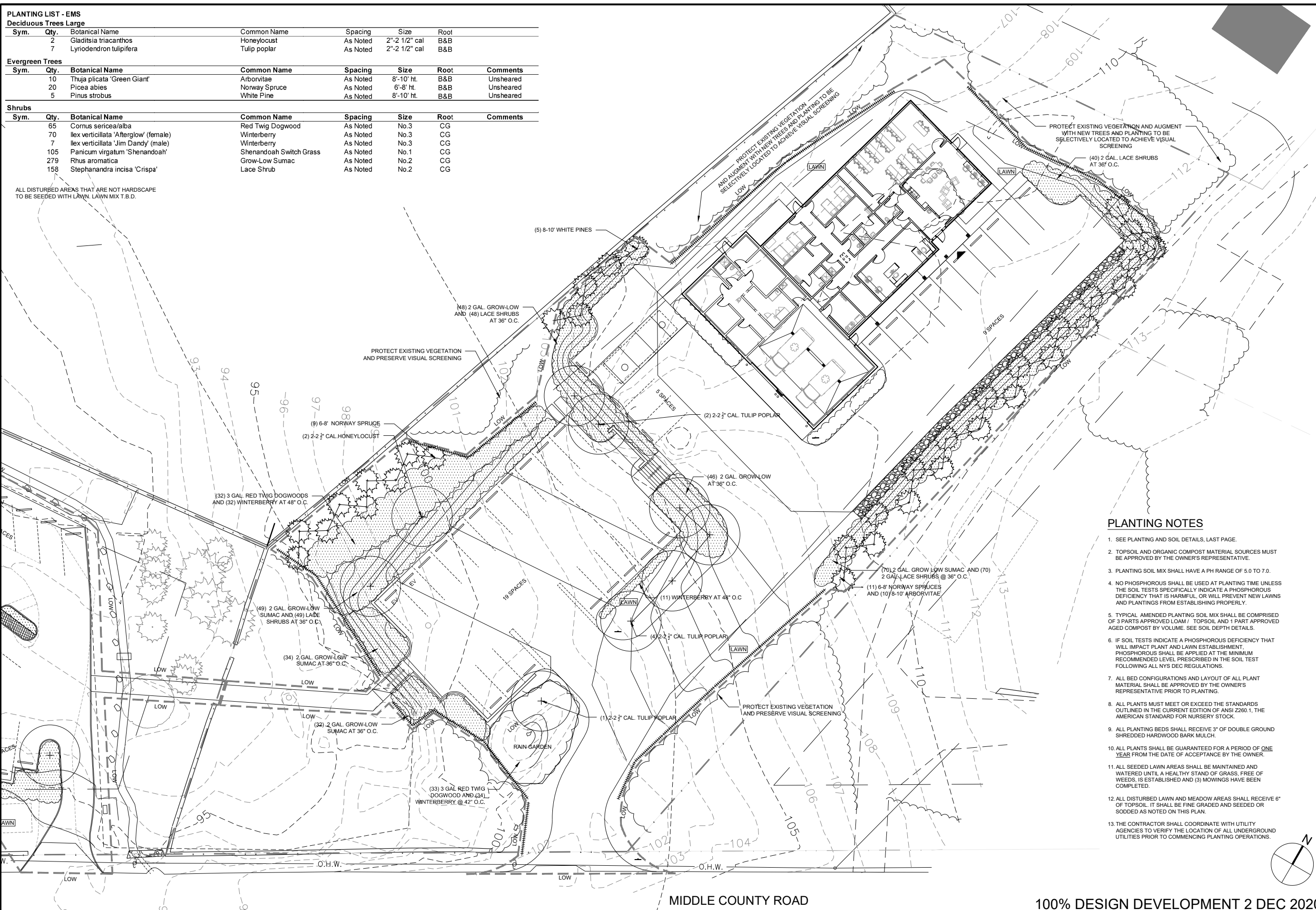
Evergreen Trees

Sym.	Qty.	Botanical Name	Common Name	Spacing	Size	Root	Comments
	10	Thuja plicata 'Green Giant'	Arborvitae	As Noted	8'-10' ht.	B&B	Unsheared
	20	Picea abies	Norway Spruce	As Noted	6'-8' ht.	B&B	Unsheared
	5	Pinus strobus	White Pine	As Noted	8'-10' ht.	B&B	Unsheared

Shrubs

Sym.	Qty.	Botanical Name	Common Name	Spacing	Size	Root	Comments
	65	Cornus sericea/alba	Red Twig Dogwood	As Noted	No.3	CG	
	70	Ilex verticillata 'AFTERGLOW' (female)	Winterberry	As Noted	No.3	CG	
	7	Ilex verticillata 'Jim Dandy' (male)	Winterberry	As Noted	No.3	CG	
	105	Panicum virgatum 'Shenandoah'	Shenandoah Switch Grass	As Noted	No.1	CG	
	279	Rhus aromatica	Grow-Low Sumac	As Noted	No.2	CG	
	158	Stephanandra incisa 'Crispa'	Lace Shrub	As Noted	No.2	CG	

ALL DISTURBED AREAS THAT ARE NOT HARDSCAPE TO BE SEEDED WITH LAWN. LAWN MIX T.B.D.



PLANTING NOTES

- SEE PLANTING AND SOIL DETAILS, LAST PAGE.
- TOPSOIL AND ORGANIC COMPOST MATERIAL SOURCES MUST BE APPROVED BY THE OWNER'S REPRESENTATIVE.
- PLANTING SOIL MIX SHALL HAVE A PH RANGE OF 5.0 TO 7.0.
- NO PHOSPHOROUS SHALL BE USED AT PLANTING TIME UNLESS THE SOIL TESTS SPECIFICALLY INDICATE A PHOSPHOROUS DEFICIENCY THAT IS HARMFUL OR WILL PREVENT NEW LAWNS AND PLANTINGS FROM ESTABLISHING PROPERLY.
- TYPICAL AMENDED PLANTING SOIL MIX SHALL BE COMPRISED OF 3 PARTS APPROVED LOAM / TOPSOIL AND 1 PART APPROVED AGED COMPOST BY VOLUME. SEE SOIL DEPTH DETAILS.
- IF SOIL TESTS INDICATE A PHOSPHOROUS DEFICIENCY THAT WILL IMPACT PLANT AND LAWN ESTABLISHMENT, PHOSPHOROUS SHALL BE APPLIED AT THE MINIMUM RECOMMENDED LEVEL PRESCRIBED IN THE SOIL TEST FOLLOWING ALL NYS DEC REGULATIONS.
- ALL BED CONFIGURATIONS AND LAYOUT OF ALL PLANT MATERIAL SHALL BE APPROVED BY THE OWNER'S REPRESENTATIVE PRIOR TO PLANTING.
- ALL PLANTS MUST MEET OR EXCEED THE STANDARDS OUTLINED IN THE CURRENT EDITION OF ANSI Z260.1, THE AMERICAN STANDARD FOR NURSERY STOCK.
- ALL PLANTING BEDS SHALL RECEIVE 3" OF DOUBLE GROUND SHREDDED HARDWOOD BARK MULCH.
- ALL PLANTS SHALL BE GUARANTEED FOR A PERIOD OF ONE YEAR FROM THE DATE OF ACCEPTANCE BY THE OWNER.
- ALL SEEDED LAWN AREAS SHALL BE MAINTAINED AND WATERED UNTIL A HEALTHY STAND OF GRASS, FREE OF WEEDS, IS ESTABLISHED AND (3) MOWINGS HAVE BEEN COMPLETED.
- ALL DISTURBED LAWN AND MEADOW AREAS SHALL RECEIVE 6" OF TOPSOIL. IT SHALL BE FINE GRADED AND SEEDED OR SOODED AS NOTED ON THIS PLAN.
- THE CONTRACTOR SHALL COORDINATE WITH UTILITY AGENCIES TO VERIFY THE LOCATION OF ALL UNDERGROUND UTILITIES PRIOR TO COMMENCING PLANTING OPERATIONS.

Architect
Keenan + Kenny Architects, Ltd.
189 Main Street
Falmouth, Massachusetts 02540
Tel. 508-540-0075

Civil Engineers
Vineyard Land Surveying & Engineering, Inc.
12 Courmoyer Road
W. Taubery, Massachusetts 02540
Tel. 508-258-0440

Structural Engineers
Coastal Engineering Company, Inc.
260 Cranberry Highway
Orleans, MA 02553
Tel. 508-255-0511

Mechanical, Electrical, Plumbing and Fire Protection Engineers
Giffin & Vary, Inc.
12 Kendrick Road
Wareham, Massachusetts 02571
Tel. 508-295-0050

Landscape Architect
T.L. Studio
35B North Main Street
Falmouth, Massachusetts 02540
Tel. 508-566-2185

Specifications Consultant
ARCHITX, LLC
5 Topsy Drive
Stafford Springs, CT 06076
Tel. 860-872-9627

Cost Estimating Services
Rider Levett Bucknall
Two Financial Center, Suite 810,
60 South Street
Boston, MA 02111
Tel. 617-737-9339

Code Consultant
JENSEN HUGHES
117 Metro Center Blvd
Warwick, Rhode Island 02886
Tel. 401-736-8592

Owner's Project Manager
CHA Consulting, Inc.
150 Baker Ave #205
Concord, MA 01742
Tel. 978-369-2890

NEW TRI-TOWN EMS HQ FOR THE TOWNS OF:
AQUINNAH, CHILMARK + WEST TISBURY
MIDDLE ROAD
CHILMARK, MASSACHUSETTS



REVISIONS

NO.	DATE	DESCRIPTION

PROJECT NO. CHILMARK
ISSUED DATE: 2 DEC 2020
SHEET TITLE: PLANTING PLAN - EMS HQ

ISSUED BY: TLS
SCALE: 1/16" = 1'-0"
DISCIPLINE: CATEGORY - SUB CATEGORY - SHEET
L3.0

MIDDLE COUNTY ROAD

100% DESIGN DEVELOPMENT 2 DEC 2020