

MEMORANDUM

To: Middle Line Contractors/ Sub-Contractors

From: Michelle DeYoung

Date: August 26, 2009

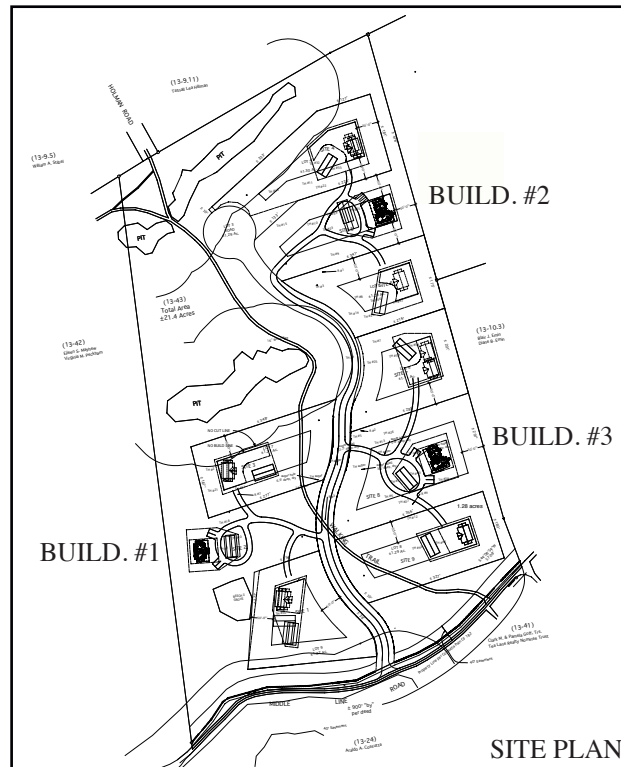
Re: Middle Line Summary Sheet

BUILDING #1: 2 units @ 2 bedrooms each
2,133 gsf.

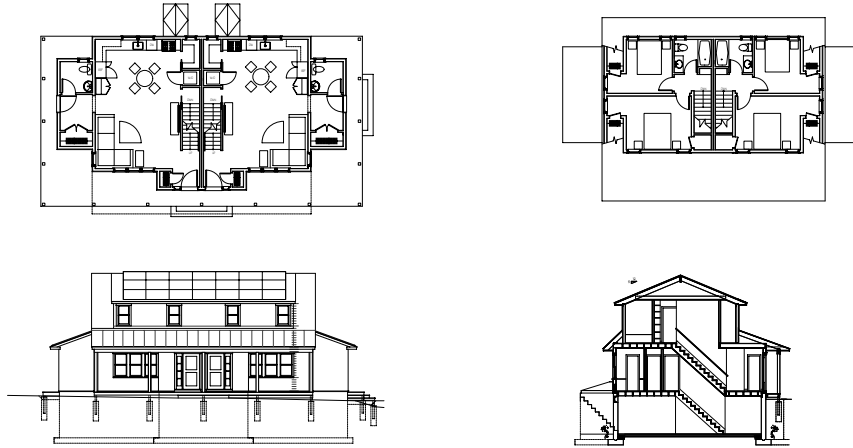
BUILDING #2: 2 units: 1 @ 3 bedroom; 1 @ 1 bedroom
2,314 gsf.

BUILDING #3: 2 units: 1 @ 3 bedroom; 1 @ 1 bedroom
2,314 gsf.

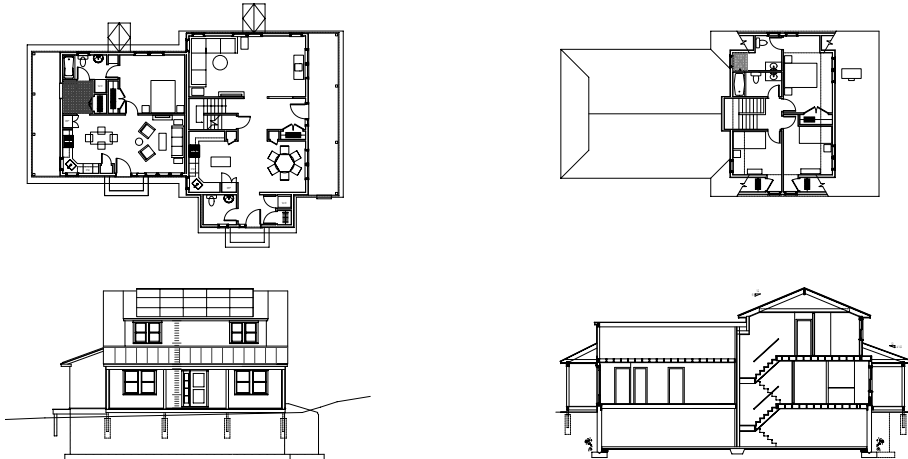
* gsf= habitable
within exterior
face of sheathing.
Does not include
basement, attic,
porch, deck.



BUILDING #1: 2 units @ 2 bedrooms each



BUILDING #2: 2 units: 1 @ 3 bedroom; 1 @ 1 bedroom (similar to #3)



BUILDING #3: 2 units: 1 @ 3 bedroom; 1 @ 1 bedroom (similar to #2)

