

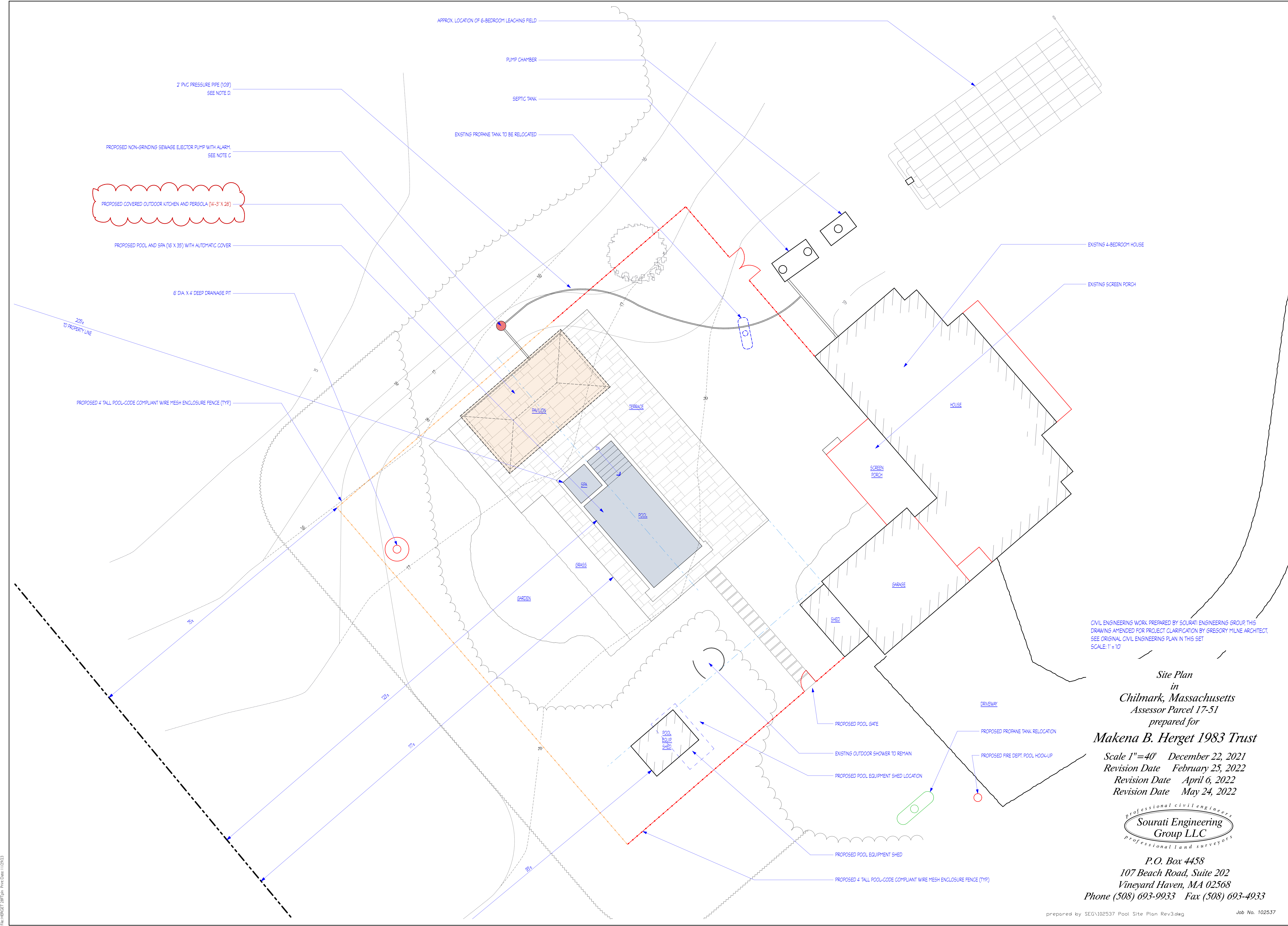
DRAWINGS SET TYPE + ISSUE DATE	
SCHEMATIC DESIGN	1/12/23
PRICING SET	10/05/23
PROGRESS SET	11/29/23

MAP 17, LOT 51

**SITE PLAN**  
**HERGET POOL PAVILION**  
73 QUENAMES ROAD CHILMARK MA

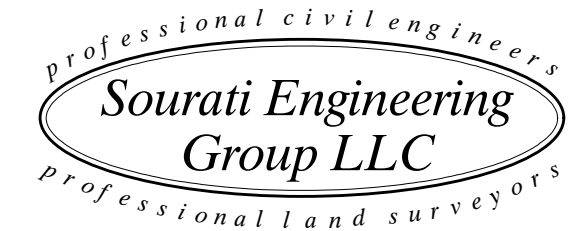
Date: 11/29/23  
Drawn by:  
Scale: As Noted

Sheet:  
**C002**



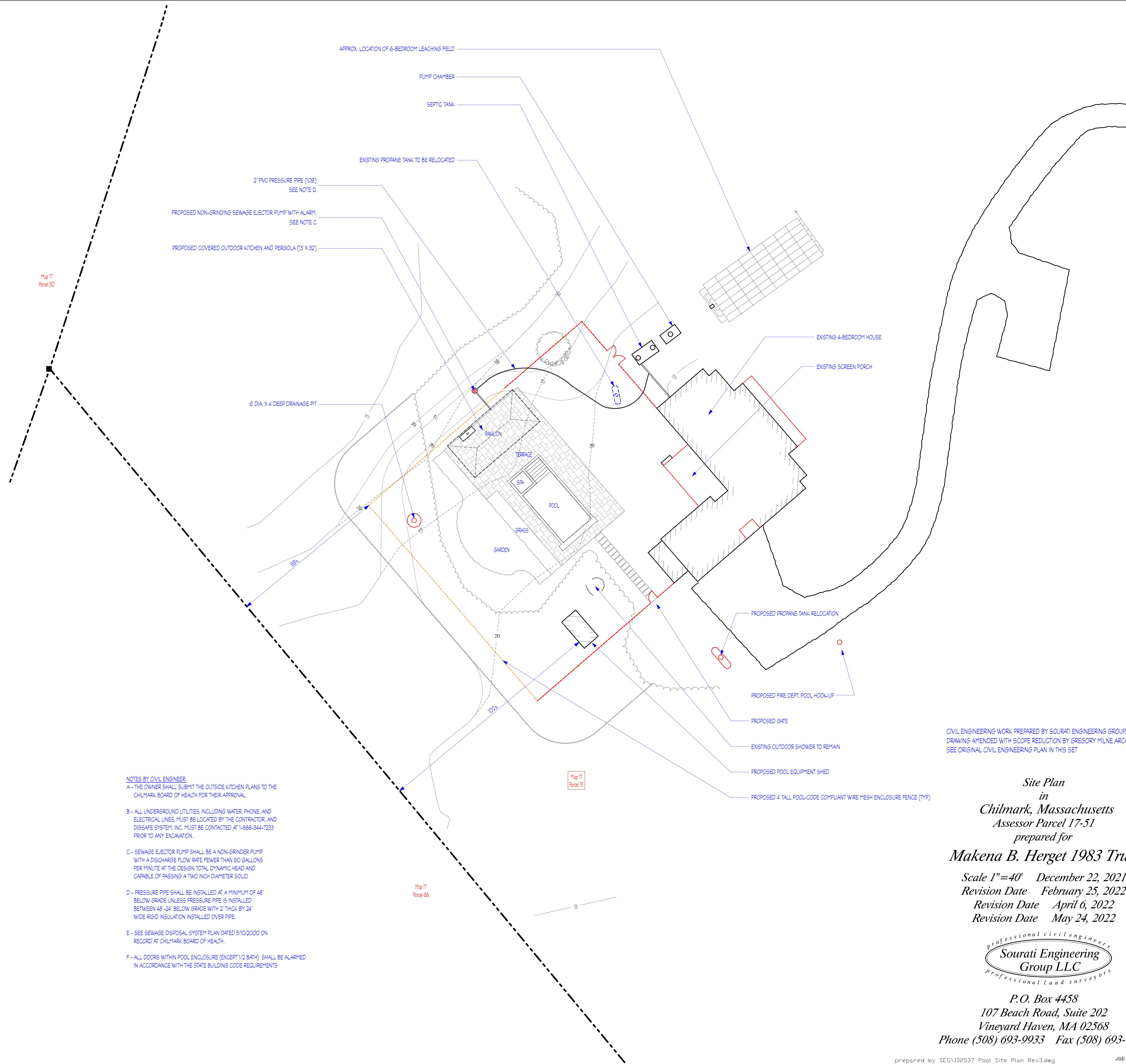
CIVIL ENGINEERING WORK PREPARED BY SOURATI ENGINEERING GROUP THIS DRAWING AMENDED FOR PROJECT CLARIFICATION BY GREGORY MILNE ARCHITECT. SEE ORIGINAL CIVIL ENGINEERING PLAN IN THIS SET SCALE: 1"=10'

*Site Plan*  
*in*  
*Chilmark, Massachusetts*  
*Assessor Parcel 17-51*  
*prepared for*  
**Makena B. Herget 1983 Trust**  
*Scale 1"=40'* December 22, 2021  
*Revision Date February 25, 2022*  
*Revision Date April 6, 2022*  
*Revision Date May 24, 2022*



**Sourati Engineering Group LLC**  
P.O. Box 4458  
107 Beach Road, Suite 202  
Vineyard Haven, MA 02568  
Phone (508) 693-9933 Fax (508) 693-4933





**NOTES BY CIVIL ENGINEER:**  
 A - THE OWNER SHALL SUBMIT THE OUTSIDE KITCHEN PLANS TO THE CHILMARK BOARD OF HEALTH FOR THEIR APPROVAL.  
 B - ALL UNDERGROUND UTILITIES, INCLUDING WATER, PHONE, AND ELECTRICAL LINES, MUST BE LOCATED BY THE CONTRACTOR, AND DIGSAFE SYSTEM, INC. MUST BE CONTACTED AT 1-888-344-7233 PRIOR TO ANY EXCAVATION.  
 C - SEWAGE EJECTOR PUMP SHALL BE A NON-GRINDER PUMP WITH A DISCHARGE FLOW RATE FEWER THAN 60 GALLONS PER MINUTE AT THE DESIGN TOTAL DYNAMIC HEAD AND CAPABLE OF PASSING A TWO INCH DIAMETER SOLID.  
 D - PRESSURE PIPE SHALL BE INSTALLED AT A MINIMUM OF 48" BELOW GRADE UNLESS PRESSURE PIPE IS INSTALLED BETWEEN 48"-24" BELOW GRADE WITH 2" THICK BY 24" WIDE RIGID INSULATION INSTALLED OVER PIPE.  
 E - SEE SEWAGE DISPOSAL SYSTEM PLAN DATED 5/10/2000 ON RECORD AT CHILMARK BOARD OF HEALTH.  
 F - ALL DOORS WITHIN POOL ENCLOSURE (EXCEPT 1/2 BATH) SHALL BE ALARMED IN ACCORDANCE WITH THE STATE BUILDING CODE REQUIREMENTS

CIVIL ENGINEERING WORK PREPARED BY SOURATI ENGINEERING GROUP. THIS DRAWING AMENDED WITH SCOPE REDUCTION BY GREGORY MILNE ARCHITECT. SEE ORIGINAL CIVIL ENGINEERING PLAN IN THIS SET

*Site Plan  
in  
Chilmark, Massachusetts  
Assessor Parcel 17-51  
prepared for  
Makena B. Herget 1983 Trust  
Scale 1"=40' December 22, 2021  
Revision Date February 25, 2022  
Revision Date April 6, 2022  
Revision Date May 24, 2022*



**Sourati Engineering  
Group LLC**  
 P.O. Box 4458  
 107 Beach Road, Suite 202  
 Vineyard Haven, MA 02568  
 Phone (508) 693-9933 Fax (508) 693-4933