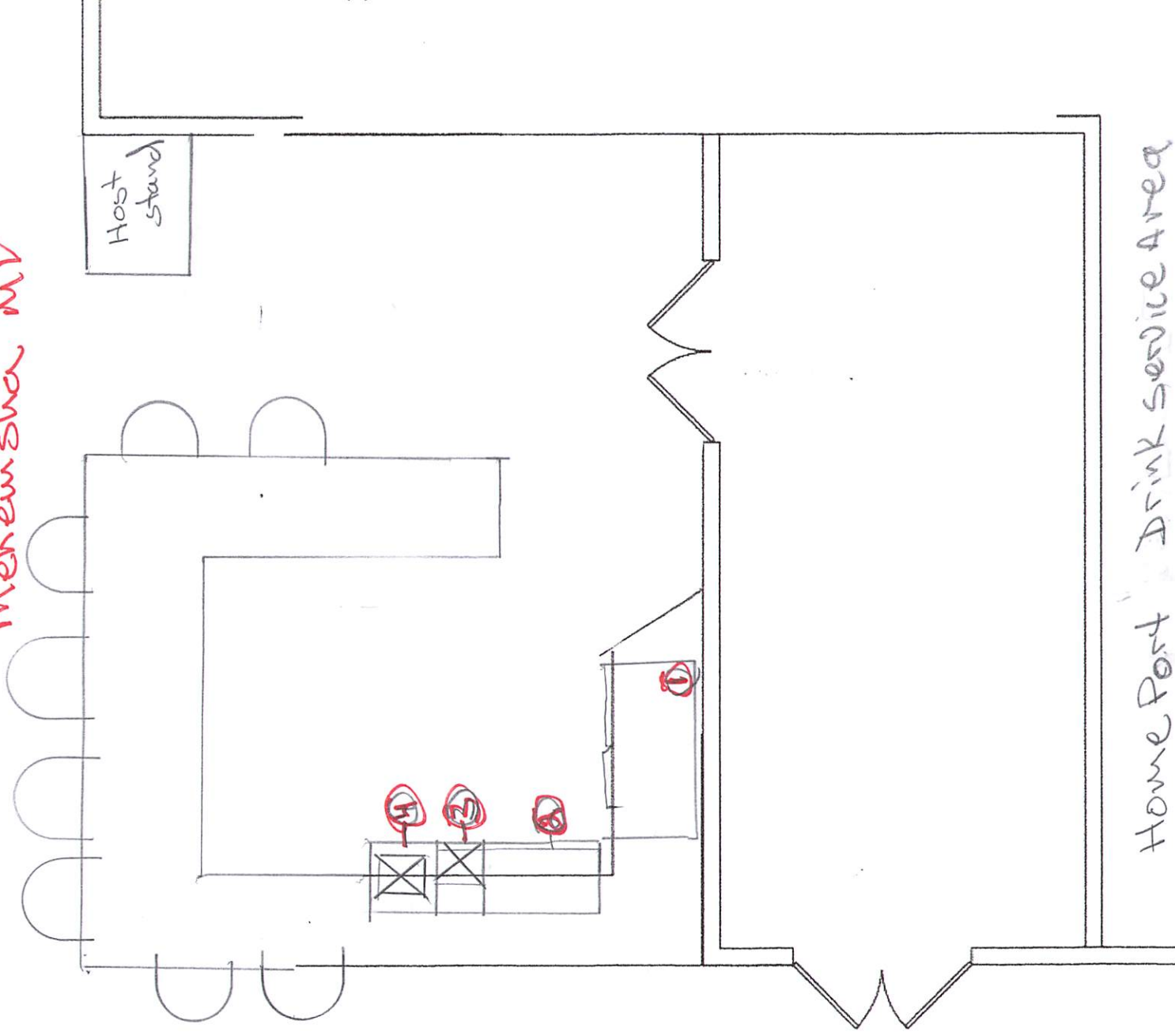


Homeport
512 North Road
Menemsha, MA



Home Port Drink Service Area
8 seats

- ① 48" Buck Bar Cooler
- ② 30" Ice well
- ③ Dump sink
- ④ self contained hotwater hand sink NSF certified

100g south

100g south
100g south
100g south

100g south
100g south
100g south

100g south

100g south
100g south
100g south

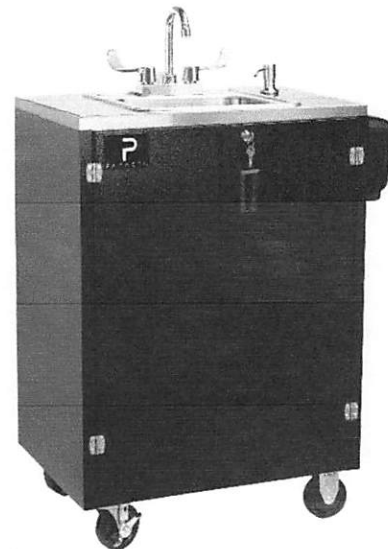
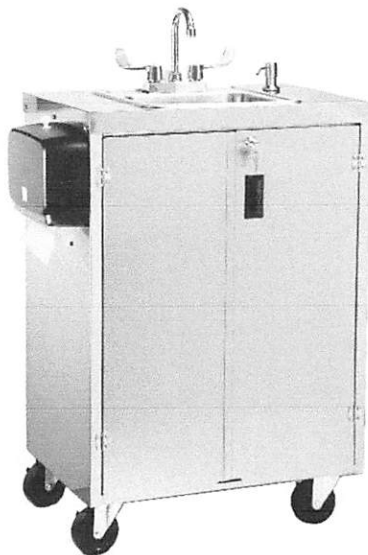
100g south
100g south
100g south



manufactured fun

P A R A G O N

eSink Portable Handwashing Station



Model/Numbers:

eSink Portable Hand Washing Sink/ #4480

eSink Portable Hand Washing Sink (Black)/ #4580

www.ManufacturedFun.com

Paragon International, Inc • 731 W. 18th Street • P.O. Box 560 • Nevada, IA 50201 USA

Phone (515) 382-8000 • Toll-free (800) 433-0333 • Fax (515) 382-8001 • Email: cs@manufacturedfun.com

eSink Portable Handwashing Station

The eSink Portable Hand Washing Station is specially-crafted to meet precise specifications for performance, efficiency, and output. The eSink is self-contained to allow hand washing and sanitizing in remote serving locations.

The Paragon E-Sink Portable Hot Water Handwashing Station provides an on-demand 1800 watt, 120V/20 amp water heater providing a hot water from a 5-gallon fresh water tank that allows for 64 hand washes. The waste water is captured in a 7-gallon waste water tank. The water heater has a non-adjustable thermostat. The sink has a built-in 60 psi, 120 VAC, 0.7 amp water pump featuring automatic demand (no priming required), and feature back flow protection to prevent fresh water contamination.

Constructed from heavy gauge stainless steel cabinet, this portable sink is durable and easy to clean. The sink is equipped with 5" locking casters for mobility, twin hinged stainless steel doors and a sturdy lock. Furnished with deck mount, goose-neck faucet with long paddle handles, soap dispenser, paper towel dispenser, 120 volt pump, 5-gallon fresh water tank, and 7-gallon waste water tank, GFCI electrical outlet, 10' cord. This unit requires a 120V, 20 amp electrical connection for operation of the hot water heater. The sink measures 25.5" W, 18.25" D, 37.5" H and weighs 90 pounds.

Perfect for nearly anyone looking to promote sanitation and healthy living, such as schools, restaurants, medical offices and remote settings such as concessions stands, construction sites, festivals, and sporting events that may not have a conveniently located wash area. The Paragon portable e-Sink provides both hot and cold running water for hand washing. It also includes a paper towel and deck mounted soap pump dispenser to be used with liquid soap (not included).

Paragon Portable Hand Sink Features:

- All 304 stainless steel construction that withstands heavy commercial use
- Ready to operate out of shipping container; all components factory installed
- On-demand hot water hand washing system with single stainless steel basin
- Manual push down liquid soap dispenser and side mount tug-n-pull paper towel dispenser
- Mobile: Locking swivel casters allows for effortless transportation
- Commercial grade five (5) gallon fresh water tank has an Easy Connect cap
- Commercial grade seven (7) gallon waste water tank
- Lockable stainless steel cabinet
- Dual drain trap prevent smell from waste water
- External waste water exit hole allows alternative drain solution with a standard ¾" hose thread
- Seamless, deep drawn bowl design is easy to clean
- Kit available for an external water connection (Paragon Kit Model# 544805)

Paragon Portable Hand Sink Specifications:

Model Number	4480 and 4580 (Black)
Model name	E-Sink (Electric) Portable Hand Sink
Product Series	Electric
Brand	Paragon Portable Sink®
NSF Certified	Yes
Warranty	1 Year commercial product warranty

Indoor Use	Yes
Outdoor Use	Yes; requires access to 120V plug
Free Standing	Yes
Wheels	Yes, four, locking
Number of Basins	One
Number of Hand Washings	Approximately 64
Cabinet Material	304 Stainless steel
Cabinet Locking	Yes
Dimensions	26.25" W x 18.5"D x 37"H, 95 pounds
Soap Dispenser Type	Basin mounted liquid soap dispenser
Paper Towel Dispenser	Side mount, tug and pull
Faucet Type	Spout with two paddle handles
On/Off Mechanism	On/Off switch; stand-by operation
GPM	.32 gallons per minute
Water Quality	Water must meet EPA Standards with PH between 7.0 and 9.0
Fresh Water Tank	5 Gallon capacity
WasteWater Tank	7 Gallon capacity
Basin Material	304 Stainless steel
Basin Dimensions	23.75"W x 14.75"L x 5.75"D

Portable Hand Sink Applications

- Concession stands, food trucks & tents
- Outdoor events
- Medical exam rooms, Lab and testing facilities
- Tradeshows
- Catering events
- Restaurants, cafeterias & waitress stations
- Mall kiosks
- School classrooms and playgrounds

Key Features:

