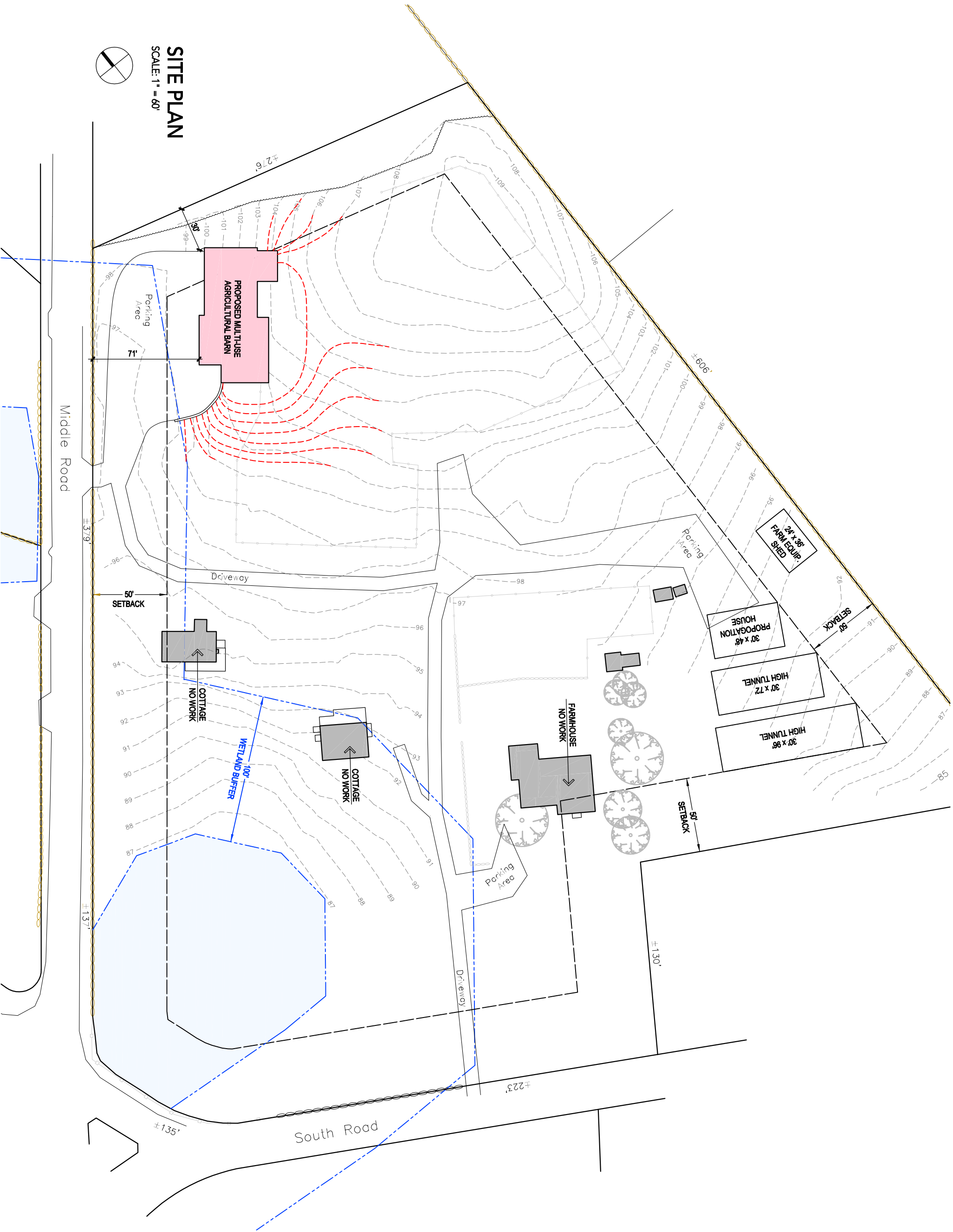




SITE PLAN
SCALE: 1" = 60'



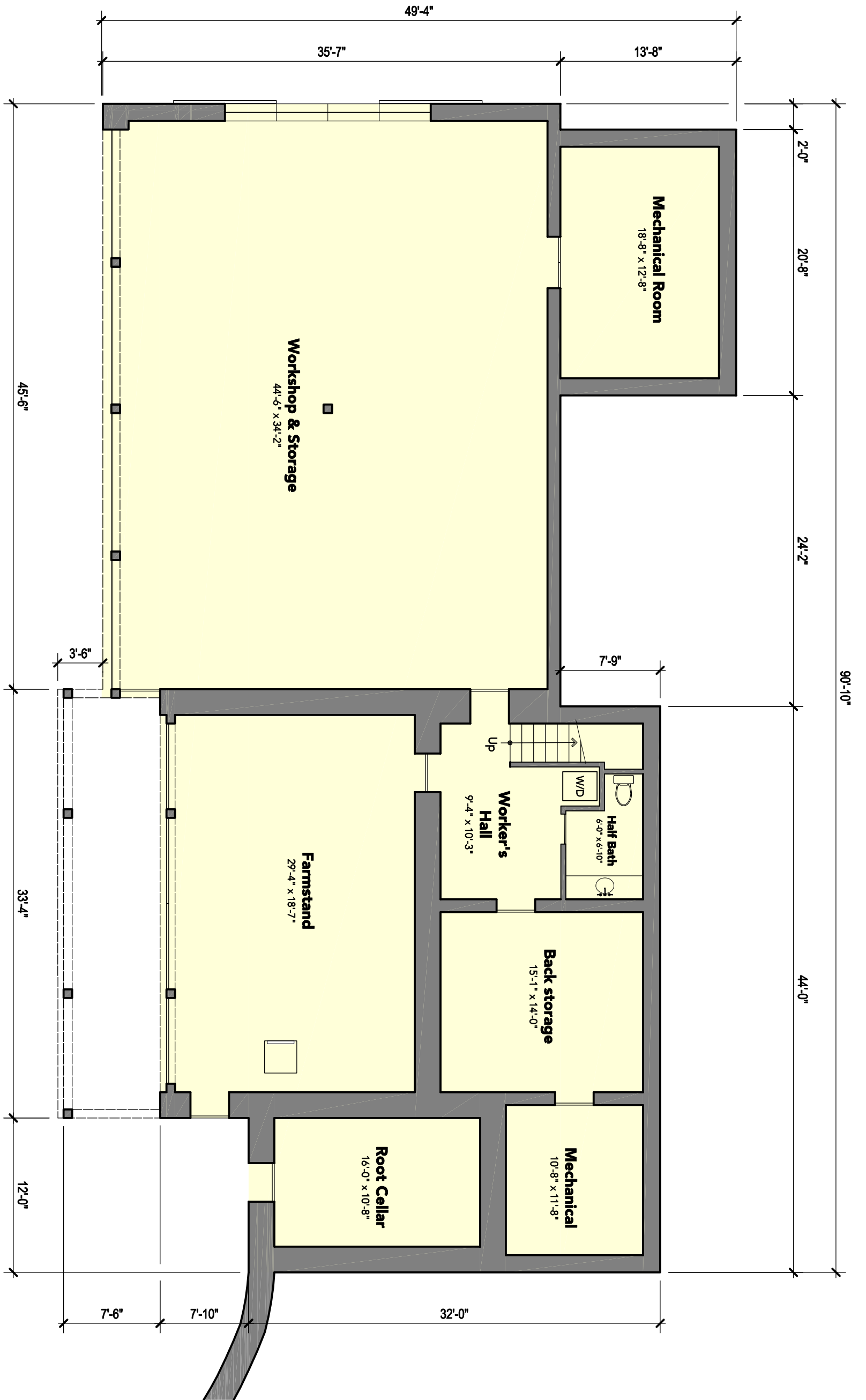
BD DESIGN GROUP

P.O. BOX 1355, GREENWICH, CT 06836 • THE GLOAMING, BOX 447, FISHERS ISLAND, NY 06390
CT> P: 203.983.6083 | F: 203.983.6084 • NY> P: 631.788.5648 | F: 631.788.5647 • www.bddesigngroup.com

ARCHITECT OF RECORD:
SAM FITZGERALD ARCHITECT, PC

BEETLEBUNG BARN
MARTHA'S VINEYARD, MASSACHUSETTS

8 DECEMBER 2020



LOWER LEVEL PLAN

SCALE: 1/8"=1'-0"

BD DESIGN GROUP

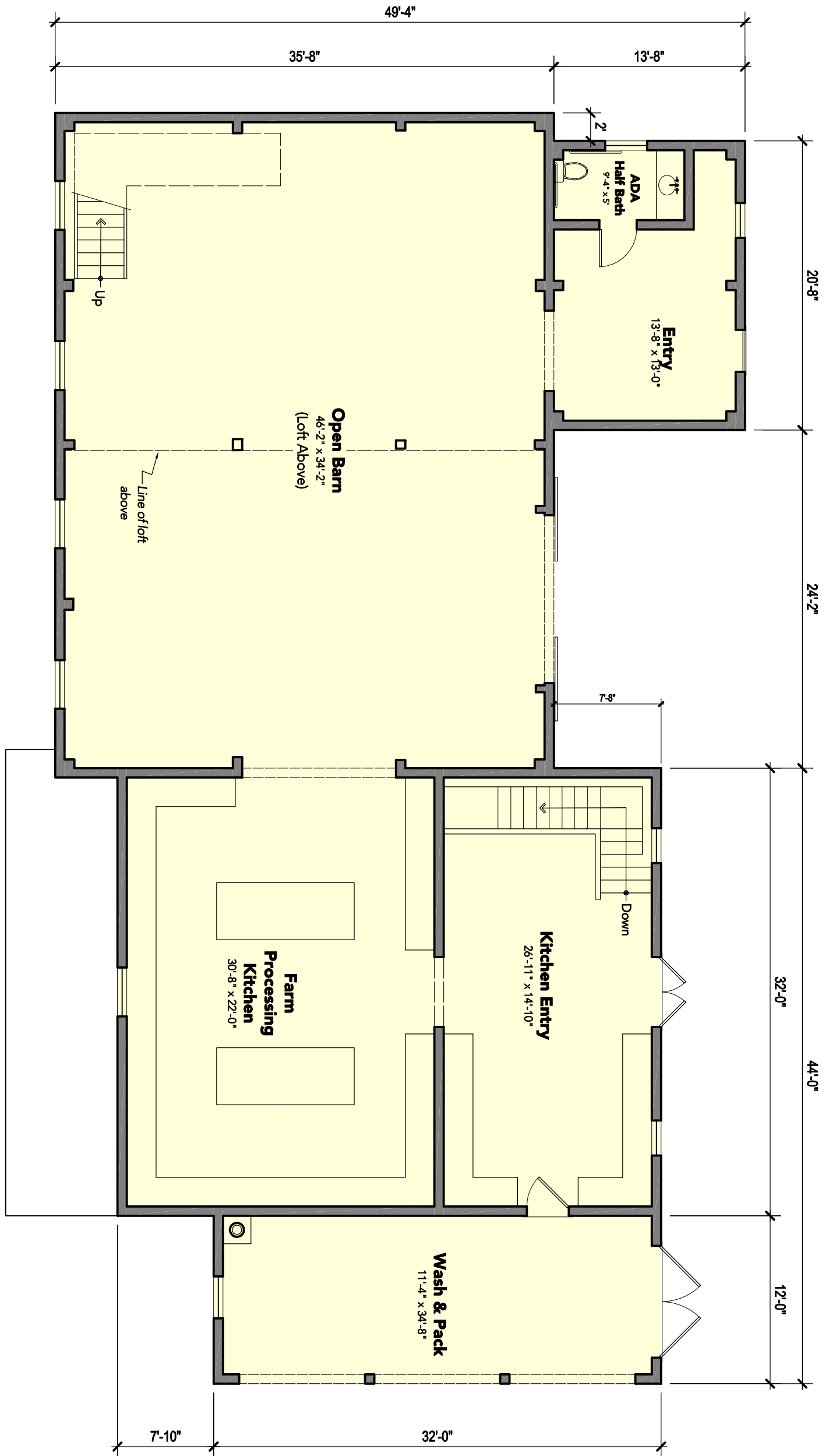
P.O. BOX 1355, GREENWICH, CT 06836 • THE GLOAMING, BOX 447, FISHERS ISLAND, NY 06390
 CT> P: 203.983.6083 | F: 203.983.6084 • NY> P: 631.788.5648 | F: 631.788.5647 • www.bddesigngroup.com

ARCHITECT OF RECORD:
SAM FITZGERALD ARCHITECT, PC

BEETLEBUNG BARN
 MARTHA'S VINEYARD, MASSACHUSETTS

8 DECEMBER 2020

MAIN LEVEL PLAN
SCALE: 1/8"=1'-0"



BD DESIGN GROUP

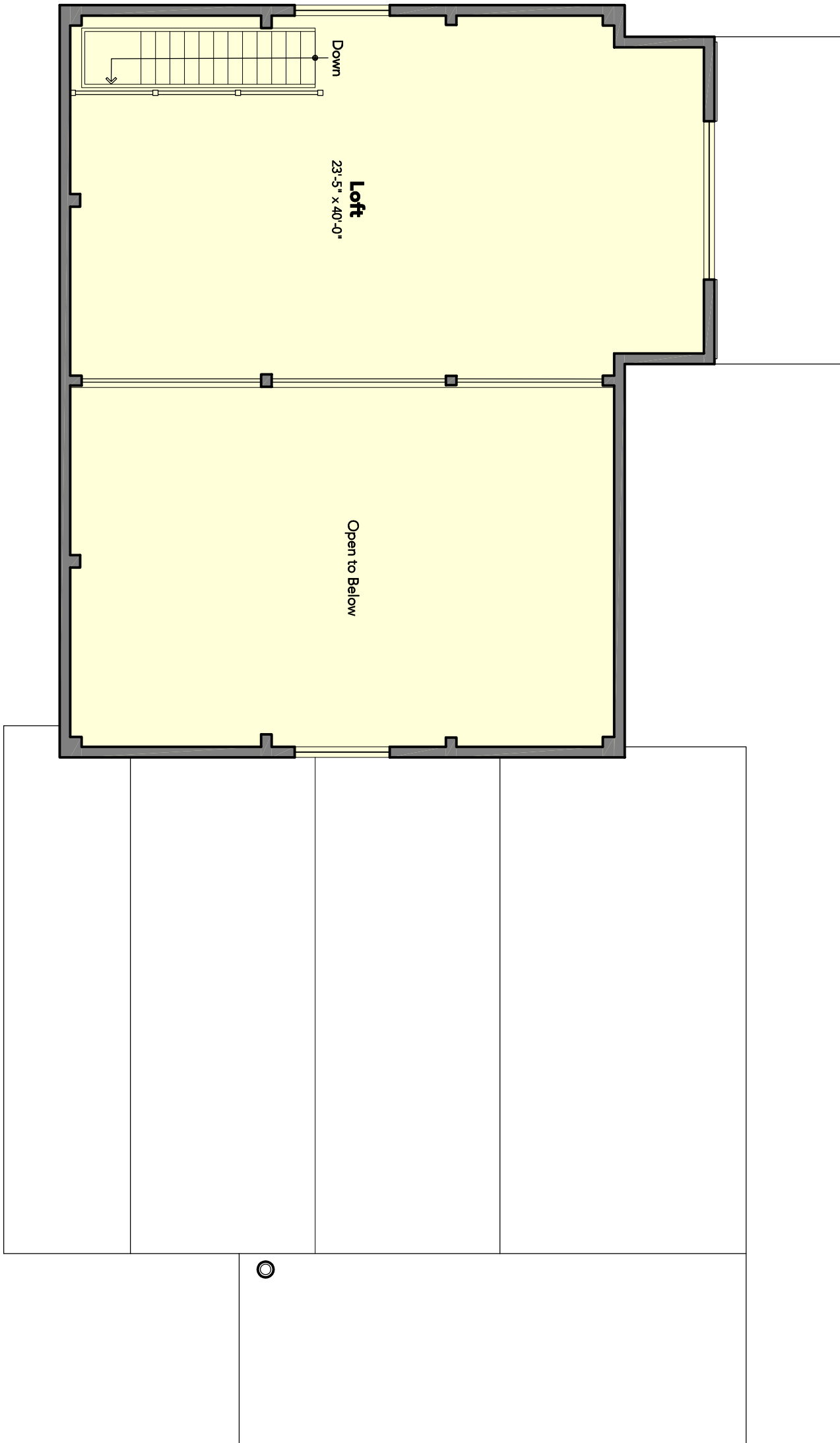
P.O. BOX 1355, GREENWICH, CT 06836 • THE GLOAMING, BOX 447, FISHERS ISLAND, NY 06390
CT> P: 203.983.6083 | F: 203.983.6084 • NY> P: 631.788.5648 | F: 631.788.5647 • www.bddesigngroup.com

ARCHITECT OF RECORD:
SAM FITZGERALD ARCHITECT, PC

BEETLEBUNG BARN
MARTHA'S VINEYARD, MASSACHUSETTS

8 DECEMBER 2020

LOFT LEVEL PLAN
SCALE: 1/8"=1'-0"



BD DESIGN GROUP

P.O. BOX 1355, GREENWICH, CT 06836 • THE GLOAMING, BOX 447, FISHERS ISLAND, NY 06390
CT> P: 203.983.6083 | F: 203.983.6084 • NY> P: 631.788.5648 | F: 631.788.5647 • www.bddesigngroup.com

ARCHITECT OF RECORD:
SAM FITZGERALD ARCHITECT, PC

BEETLEBUNG BARN
MARTHA'S VINEYARD, MASSACHUSETTS

8 DECEMBER 2020



BARN - VIEW FROM THE ROAD

BD DESIGN GROUP

P.O. BOX 1355, GREENWICH, CT 06836 • THE GLOAMING, BOX 447, FISHERS ISLAND, NY 06390
CT> P: 203.983.6083 | F: 203.983.6084 • NY> P: 631.788.5648 | F: 631.788.5647 • www.bddesigngroup.com

ARCHITECT OF RECORD:

SAM FITZGERALD ARCHITECT, PC

BEETLEBUNG BARN
MARTHA'S VINEYARD, MASSACHUSETTS

PAGE

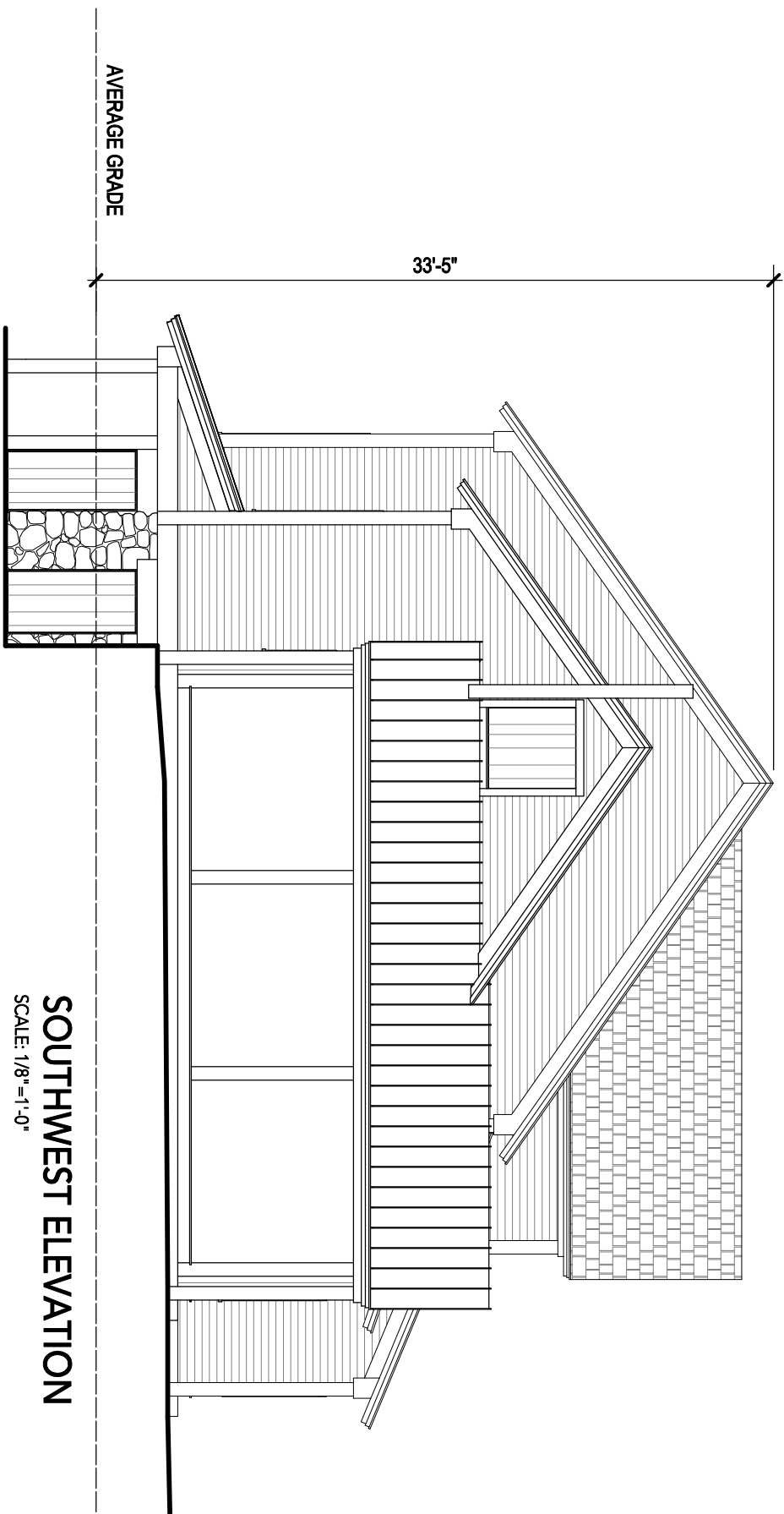
5

8 DECEMBER 2020



NORTHWEST ELEVATION

SCALE: 1/8" = 1'-0"



SOUTHWEST ELEVATION

SCALE: 1/8" = 1'-0"

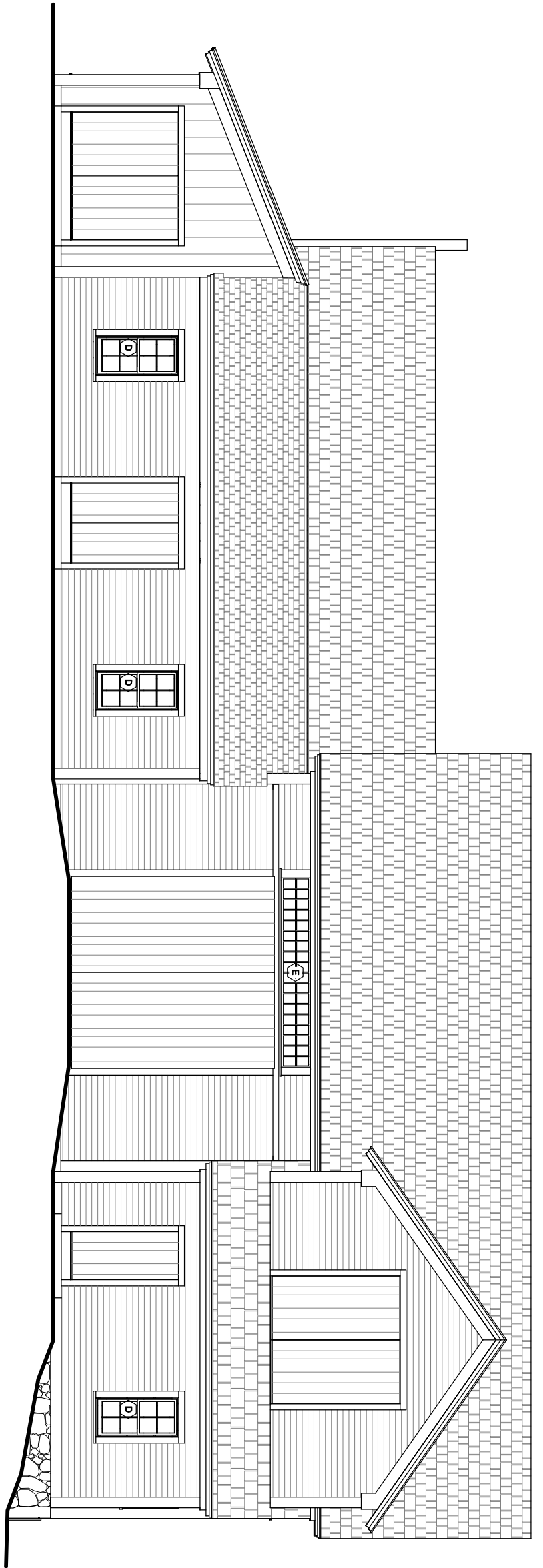
BD DESIGN GROUP

P.O. BOX 1355, GREENWICH, CT 06836 • THE GLOAMING, BOX 447, FISHERS ISLAND, NY 06390
 CT> P: 203.983.6083 | F: 203.983.6084 • NY> P: 631.788.5648 | F: 631.788.5647 • www.bddesigngroup.com

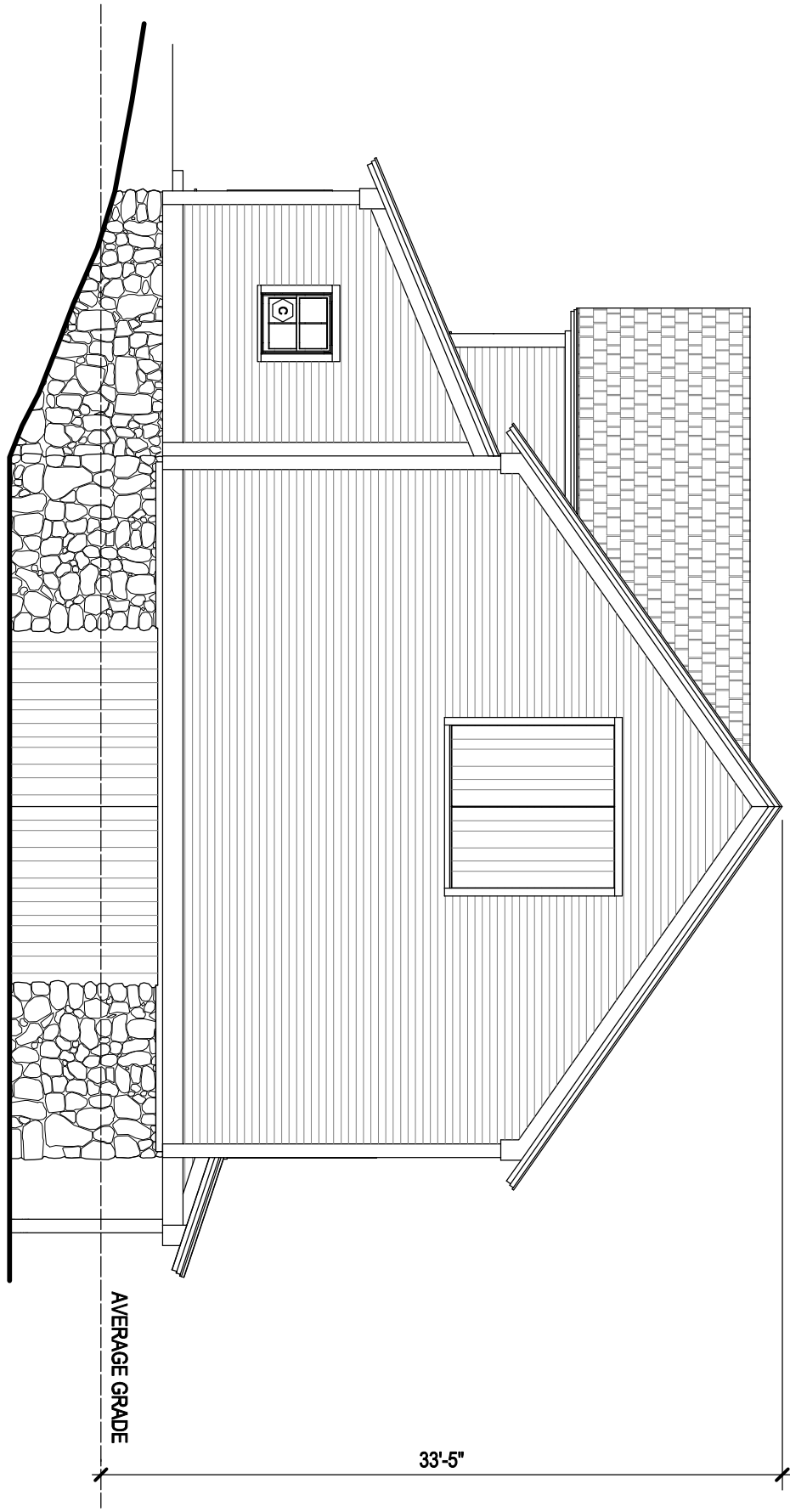
ARCHITECT OF RECORD:
SAM FITZGERALD ARCHITECT, PC

BEETLEBUNG BARN
 MARTHA'S VINEYARD, MASSACHUSETTS

8 DECEMBER 2020



SOUTHEAST ELEVATION
SCALE: 1/8"=1'-0"



NORTHEAST ELEVATION
SCALE: 1/8"=1'-0"

BD DESIGN GROUP

P.O. BOX 1355, GREENWICH, CT 06836 • THE GLOAMING, BOX 447, FISHERS ISLAND, NY 06390
CT> P: 203.983.6083 | F: 203.983.6084 • NY> P: 631.788.5648 | F: 631.788.5647 • www.bddesigngroup.com

ARCHITECT OF RECORD:
SAM FITZGERALD ARCHITECT, PC

BEETLEBUNG BARN
MARTHA'S VINEYARD, MASSACHUSETTS

8 DECEMBER 2020



Photos of the original ca. 1860 barn from Walpole, NH, dismantled and re-erected on Beetlebung Farm property.

BD DESIGN GROUP

P.O. BOX 1355, GREENWICH, CT 06836 • THE GLOAMING, BOX 447, FISHERS ISLAND, NY 06390
CT> P: 203.983.6083 | F: 203.983.6084 • NY> P: 631.788.5648 | F: 631.788.5647 • www.bddesigngroup.com

ARCHITECT OF RECORD:
SAM FITZGERALD ARCHITECT, PC

BEETLEBUNG BARN
MARTHA'S VINEYARD, MASSACHUSETTS

8 DECEMBER 2020



BD DESIGN GROUP

P.O. BOX 1355, GREENWICH, CT 06836 • THE GLOAMING, BOX 447, FISHERS ISLAND, NY 06390
CT> P: 203.983.6083 | F: 203.983.6084 • NY> P: 631.788.5648 | F: 631.788.5647 • www.bddesigngroup.com

ARCHITECT OF RECORD:
SAM FITZGERALD ARCHITECT, PC

BEETLEBUNG BARN
MARTHA'S VINEYARD, MASSACHUSETTS

8 DECEMBER 2020