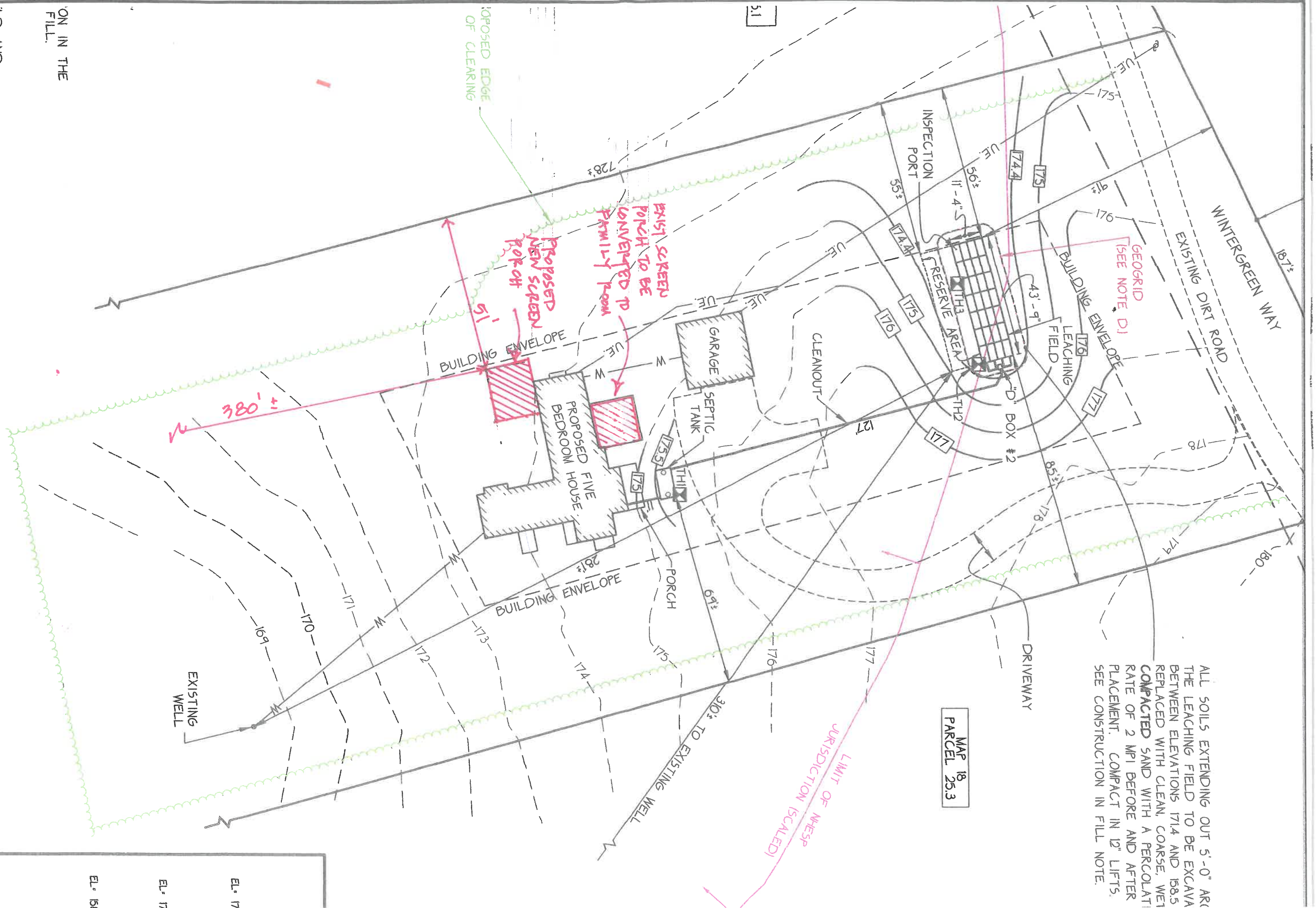


ALL SOILS EXTENDING OUT 5'-0" AROUND THE LEACHING FIELD TO BE EXCAVATED BETWEEN ELEVATIONS 171.4 AND 158.5 REPLACED WITH CLEAN, COARSE, WET COMPACTED SAND WITH A PERCOLATION RATE OF 2 MPI BEFORE AND AFTER PLACEMENT. COMPACT IN 12" LIFTS. SEE CONSTRUCTION IN FILL NOTE.

MAP 18  
PARCEL 25.3

LIMIT OF NHESP JURISDICTION (SCALED)



ON IN THE FILL AND

EL. 17  
EL. 17  
EL. 151