



# 10 North Abels Hill Road

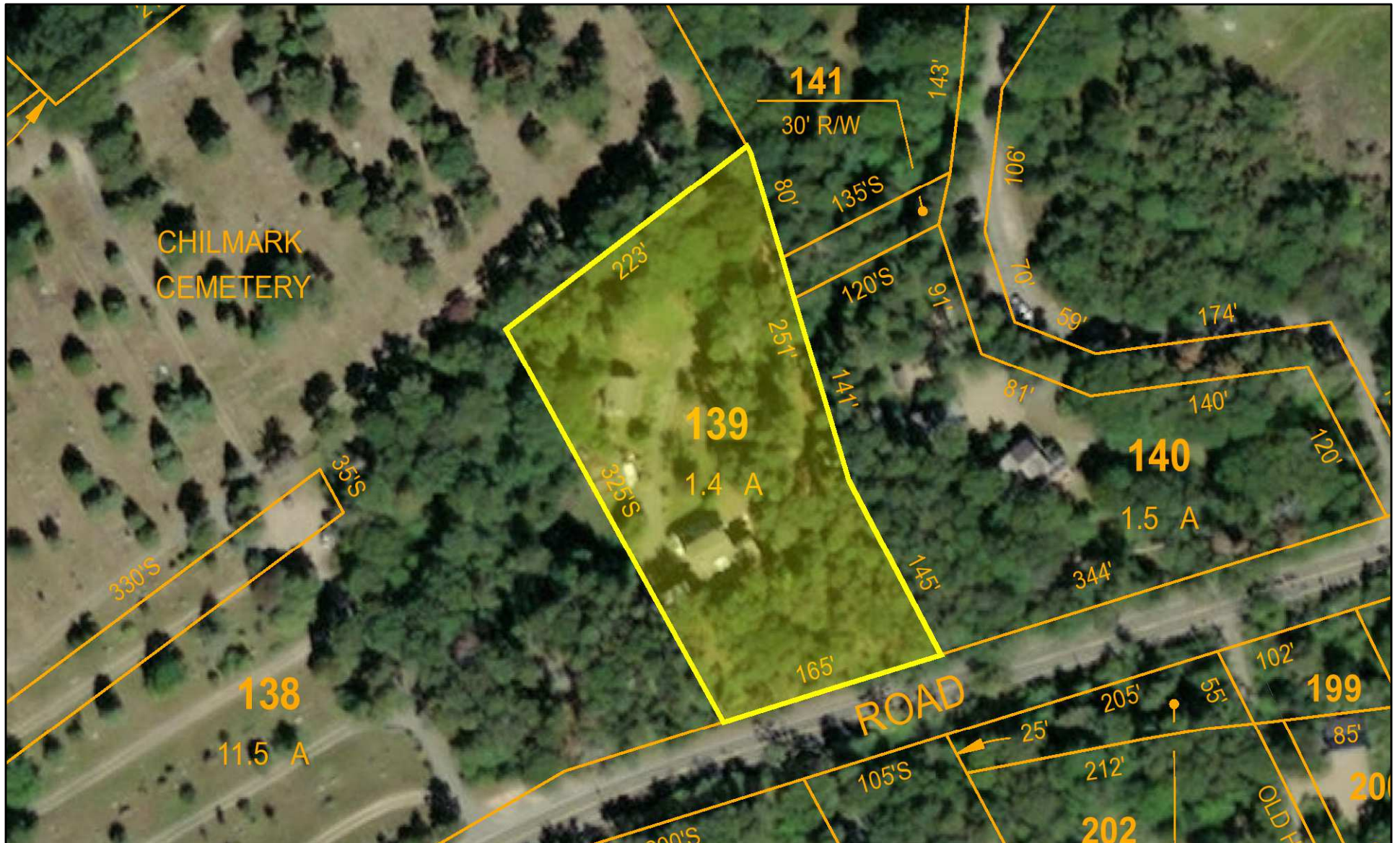
Chilmark, MA



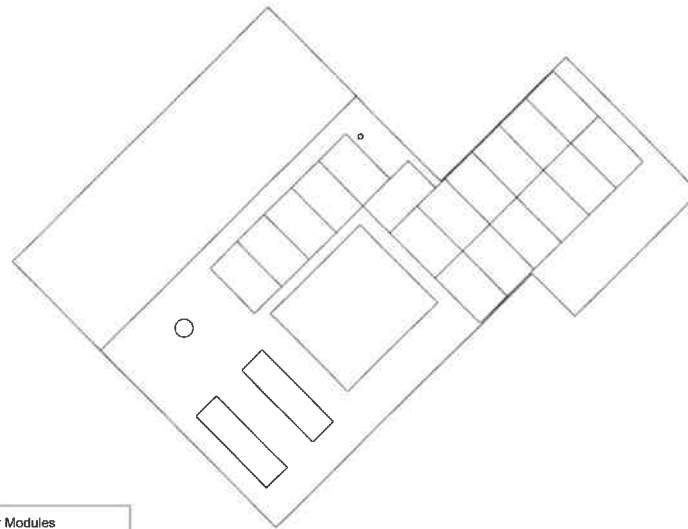
February 3, 2022

1 inch = 100 Feet

www.cai-tech.com



Data shown on this map is provided for planning and informational purposes only. The municipality and CAI Technologies are not responsible for any use for other purposes or misuse or misrepresentation of this map.



(18) LG 375w Solar Modules  
 (18) Enphase IQ Microinverters  
 to be located beneath each module

- Breaker Panel (point of connection with utility)
- Lockable Disconnect Switch
- Existing Utility Meter



Module Azimuth = 155 Degrees True

Unless Otherwise Specified:  
 Dimensions in inches  
 Tolerances: Fractional ± .001  
 Angular: Mach ± .001

Site Notes:  
 Conditions as shown, based on Field  
 Survey performed on

Do Not Scale Drawing

HIC# 170677

**FULLERS ENERGY, LLC**

Phone# 508-696-3006

Name	Date
Surveyed	
Drawn OM/RF	10/1/21
ENG Appr.	
MFR Appr.	
QA	



Project: - Fuller House, 10 North Abels Hill Rd, Chilmark, MA  
 Description: Roof Mounted 6.75 kW (18) Module Battery Backup System  
 Utility Acct#

Material  
 (18) LG 375w Modules  
 (18) Enphase IQ Microinverters

Size <b>A4</b>	Drawing No. <b>0001</b>	Rev <b>A</b>
-------------------	----------------------------	-----------------

Scale 1 Cad = 10' .1 scale	CAD File: .vc2	Sheet <b>1 of 1</b>
----------------------------------	----------------	------------------------