

**NOTES BY CIVIL ENGINEER:**  
 A - THE OWNER SHALL SUBMIT THE OUTSIDE KITCHEN PLANS TO THE CHILMARK BOARD OF HEALTH FOR THEIR APPROVAL.  
 B - ALL UNDERGROUND UTILITIES, INCLUDING WATER, PHONE, AND ELECTRICAL LINES, MUST BE LOCATED BY THE CONTRACTOR, AND DIGSAFE SYSTEM, INC. MUST BE CONTACTED AT 1-888-344-7233 PRIOR TO ANY EXCAVATION.  
 C - SEWAGE EJECTOR PUMP SHALL BE A NON-GRINDER PUMP WITH A DISCHARGE FLOW RATE FEWER THAN 60 GALLONS PER MINUTE AT THE DESIGN TOTAL DYNAMIC HEAD AND CAPABLE OF PASSING A TWO INCH DIAMETER SOLID.  
 D - PRESSURE PIPE SHALL BE INSTALLED AT A MINIMUM OF 48" BELOW GRADE UNLESS PRESSURE PIPE IS INSTALLED BETWEEN 48"-24" BELOW GRADE WITH 2" THICK BY 24" WIDE RIGID INSULATION INSTALLED OVER PIPE.  
 E - SEE SEWAGE DISPOSAL SYSTEM PLAN DATED 5/10/2000 ON RECORD AT CHILMARK BOARD OF HEALTH.  
 F - ALL DOORS WITHIN POOL ENCLOSURE (EXCEPT 1/2 BATH) SHALL BE ALARMED IN ACCORDANCE WITH THE STATE BUILDING CODE REQUIREMENTS

CIVIL ENGINEERING WORK PREPARED BY SOURATI ENGINEERING GROUP. THIS DRAWING AMENDED WITH SCOPE REDUCTION BY GREGORY MILNE ARCHITECT. SEE ORIGINAL CIVIL ENGINEERING PLAN IN THIS SET

*Site Plan  
in  
Chilmark, Massachusetts  
Assessor Parcel 17-51  
prepared for  
Makena B. Herget 1983 Trust  
Scale 1"=40' December 22, 2021  
Revision Date February 25, 2022  
Revision Date April 6, 2022  
Revision Date May 24, 2022*



**Sourati Engineering  
Group LLC**  
 P.O. Box 4458  
 107 Beach Road, Suite 202  
 Vineyard Haven, MA 02568  
 Phone (508) 693-9933 Fax (508) 693-4933

**Plan of Land**

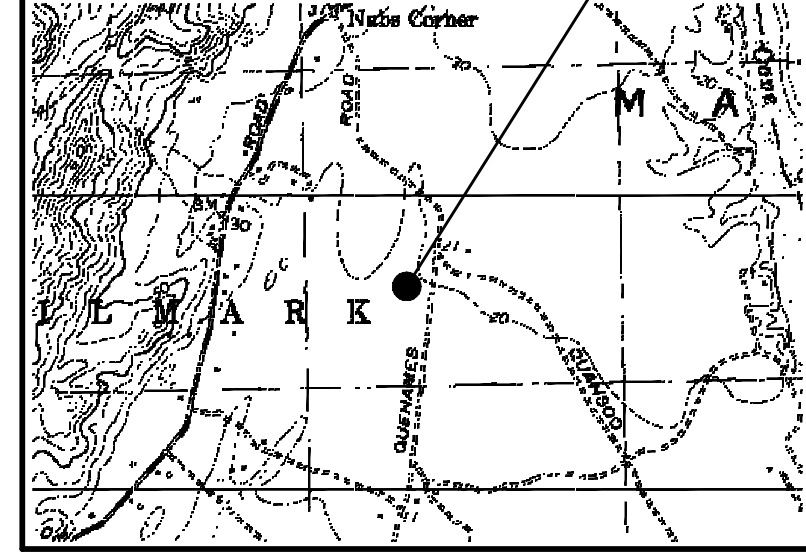
SCALE: 1"=40'  
 MAP NO.: 17  
 PARCEL NO.: 51  
 AREA: 7.25± ACRES

**GENERAL NOTES:**

- THIS PLAN IS TO BE USED ONLY FOR THE PERMITTING AND INSTALLATION OF A SEWAGE DISPOSAL SYSTEM. IT IS NOT TO BE USED FOR ANY OTHER PURPOSE.
- NO CHANGES TO THIS PLAN ARE PERMITTED WITHOUT THE PRIOR WRITTEN APPROVAL OF SOURATI ENGINEERING GROUP, LLC.
- INSTALLATION SHALL BE IN STRICT CONFORMITY WITH TITLE 5 OF THE MASSACHUSETTS STATE SANITARY CODE AND THE RULES + REGULATIONS OF THE TOWN OF CHILMARK BOARD OF HEALTH.
- MACHINERY THAT MAY DISTURB PIPE ALIGNMENT IN THE DISPOSAL SYSTEM SHALL NOT BE USED ON THE DISPOSAL AREA.
- THE PUMP CHAMBER SHALL BE EITHER:
  - WATERTIGHT ACCORDING TO MANUFACTURER'S SPECIFICATIONS AND WARRANTY, OR
  - MADE WATER-TIGHT BY THE MANUFACTURER, EQUIPMENT SUPPLIER OR INSTALLER, USING ASPHALT OR SYNTHETIC POLYMER SEALER SPECIFIED BY THE CONCRETE OR SYNTHETIC MATERIAL MANUFACTURER.
- PUMP CHAMBER SHALL BE LEVEL AND TRUE TO GRADE ON A LEVEL STABLE BASE THAT HAS BEEN MECHANICALLY COMPACTED AND ONTO WHICH 6 INCHES OF CRUSHED STONE HAVE BEEN PLACED TO MINIMIZE UNEVEN SETTLING.
- ALL SYSTEM COMPONENTS SHALL BE CONSTRUCTED OF CORROSION RESISTANT MATERIALS.
- ALL PIPING SHALL BE A MINIMUM OF SCHEDULE 40 PVC UNLESS OTHERWISE NOTED.

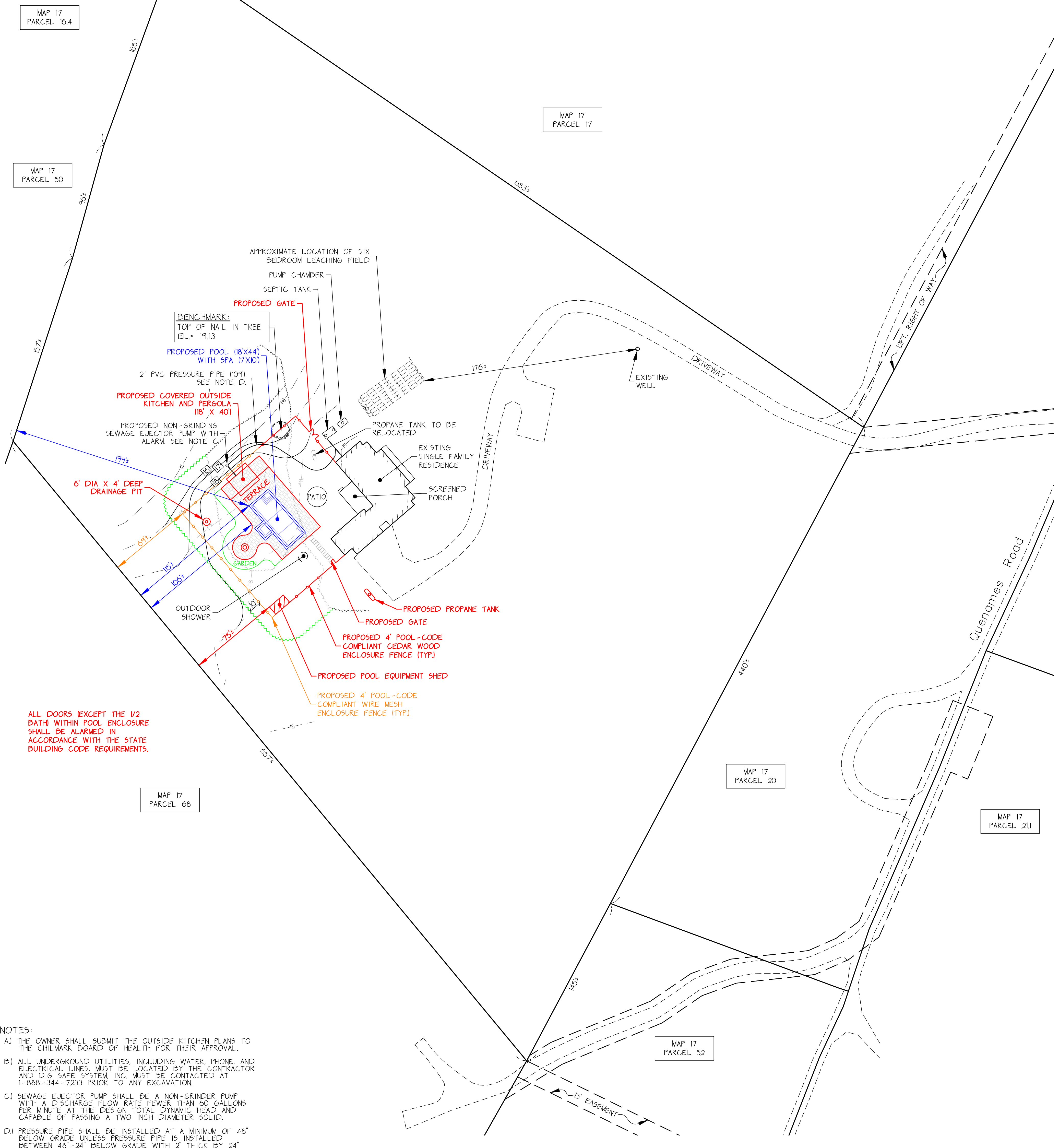
**Locus Plan**

SCALE: 1"=25000'



**Legend**

- 100--- EXISTING CONTOUR
- 100+0 EXISTING SPOT ELEVATION
- 100--- PROPOSED CONTOUR
- ⊗ TH1 PERCOLATION TEST
- X SEWAGE LINE
- W---W--- WATER LINE
- --- APPROXIMATE PROPERTY LINE
- O.W.---U.E.--- OVERHEAD WIRE OR UNDERGROUND ELECTRIC

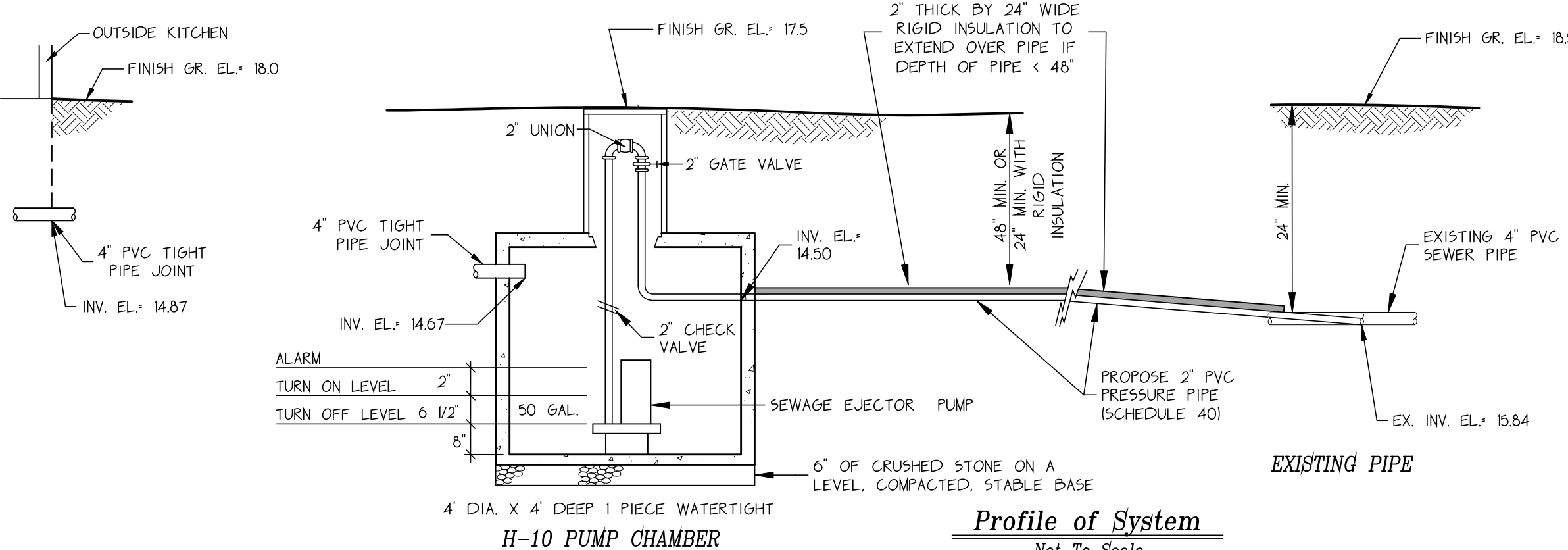


ALL DOORS EXCEPT THE 1/2 BATH WITHIN POOL ENCLOSURE SHALL BE ALARMED IN ACCORDANCE WITH THE STATE BUILDING CODE REQUIREMENTS.

- NOTES:**
- THE OWNER SHALL SUBMIT THE OUTSIDE KITCHEN PLANS TO THE CHILMARK BOARD OF HEALTH FOR THEIR APPROVAL.
  - ALL UNDERGROUND UTILITIES, INCLUDING WATER, PHONE AND ELECTRICAL LINES, MUST BE LOCATED BY THE CONTRACTOR AND DIG SAFE SYSTEM, INC. MUST BE CONTACTED AT 1-888-344-7233 PRIOR TO ANY EXCAVATION.
  - SEWAGE EJECTOR PUMP SHALL BE A NON-GRINDER PUMP WITH A DISCHARGE FLOW RATE FEWER THAN 60 GALLONS PER MINUTE AT THE DESIGN TOTAL DYNAMIC HEAD AND CAPABLE OF PASSING A TWO INCH DIAMETER SOLID.
  - PRESSURE PIPE SHALL BE INSTALLED AT A MINIMUM OF 48" BELOW GRADE UNLESS PRESSURE PIPE IS INSTALLED BETWEEN 48"-24" BELOW GRADE WITH 2" THICK BY 24" WIDE RIGID INSULATION INSTALLED OVER PIPE.
  - SEE SEWAGE DISPOSAL SYSTEM PLAN DATED 5/10/2000 ON RECORD AT CHILMARK BOARD OF HEALTH.

DATUM: ALL ELEVATIONS ARE RELATIVE TO AN ASSUMED DATUM OF 1913 SET ON TOP OF NAIL IN TREE. SEE PLAN FOR LOCATION.

WORKSHEET REFERENCE: 102537W5



**SUPERSEDED, SEE SHEET C002.**  
 SCOPE REDUCED:  
 - POOL SIZE DECREASED  
 - PERGOLA SIZE DECREASED  
 - EQUIP. SHED DISTANCE FROM POOL DECREASED  
 - HYDRANT LOCATION ADDED FOR FIRE DEPT.  
 - LANDSCAPE SCOPE REDUCED  
 - ALL NOTES REMAIN

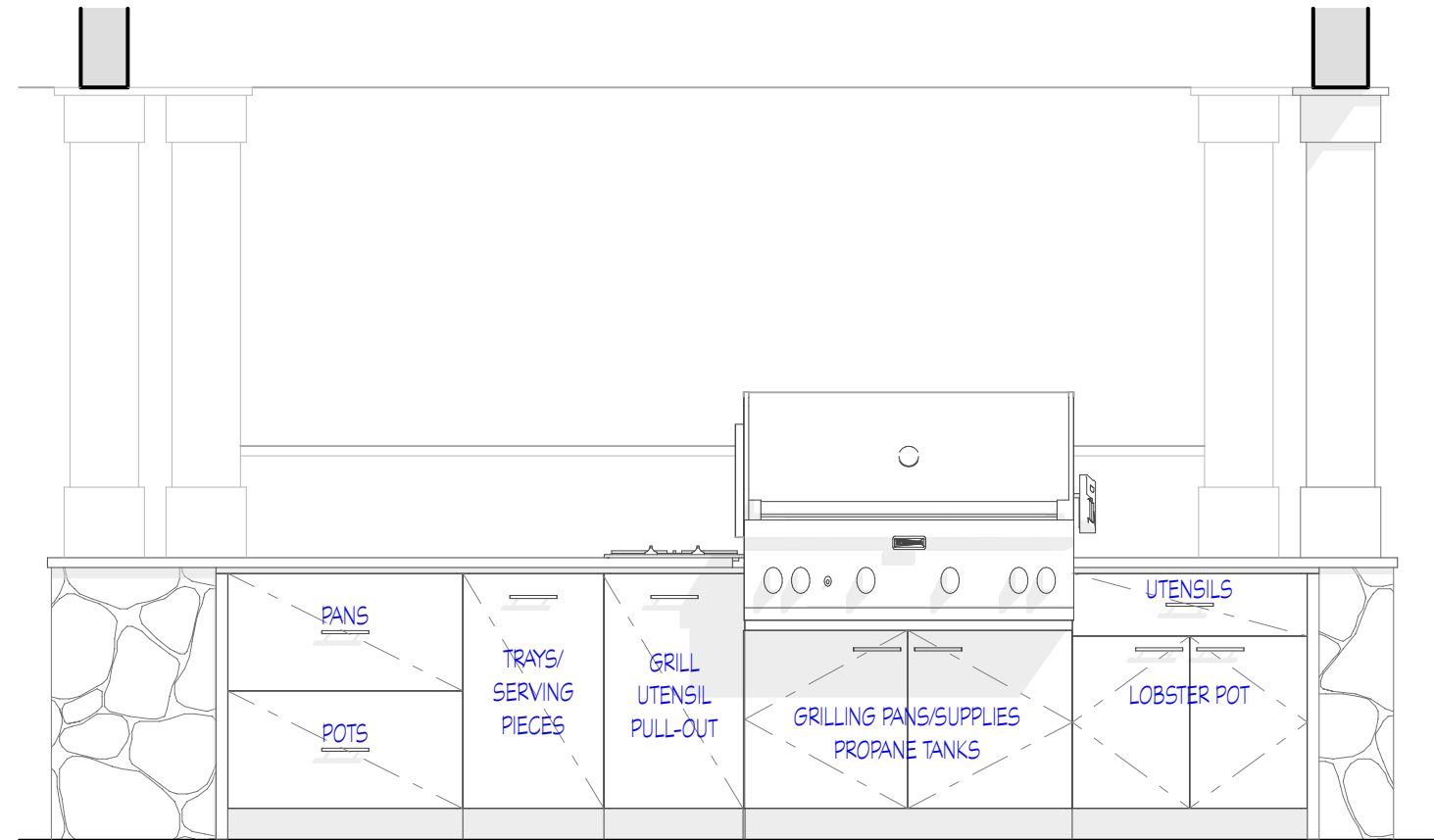
Site Plan  
 in  
 Chilmark, Massachusetts  
 Assessor Parcel 17-51  
 prepared for

**Makena B. Herget 1983 Trust**

Scale 1"=40' December 22, 2021  
 Revision Date February 25, 2022  
 Revision Date April 6, 2022  
 Revision Date May 24, 2022

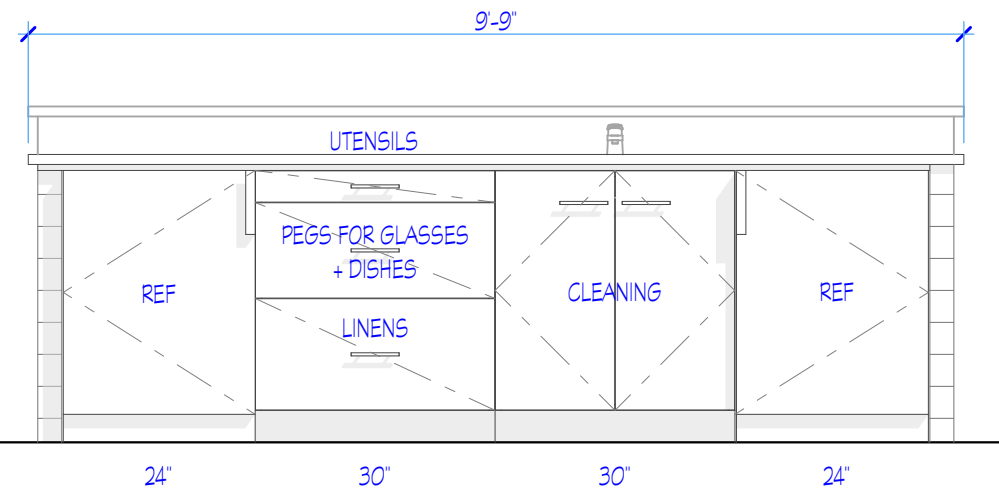


P.O. Box 4458  
 107 Beach Road, Suite 202  
 Vineyard Haven, MA 02568  
 Phone (508) 693-9933 Fax (508) 693-4933



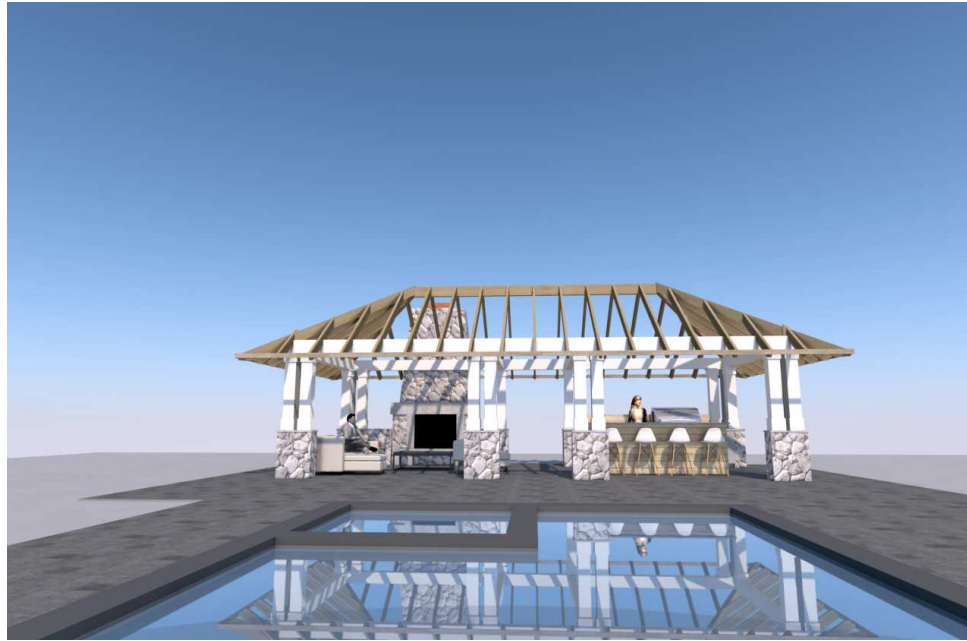
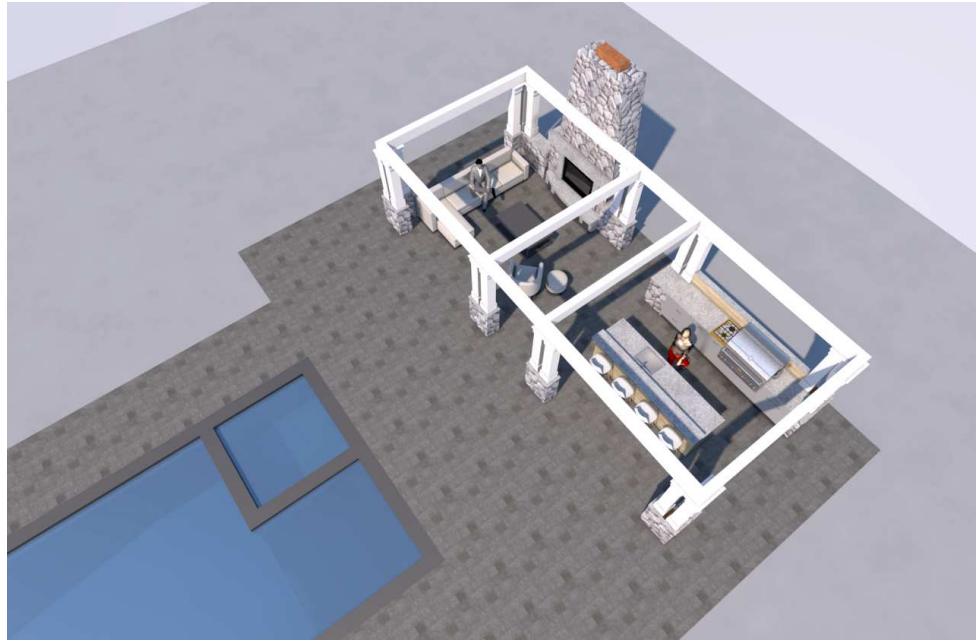
GRILL SIDE ELEVATION

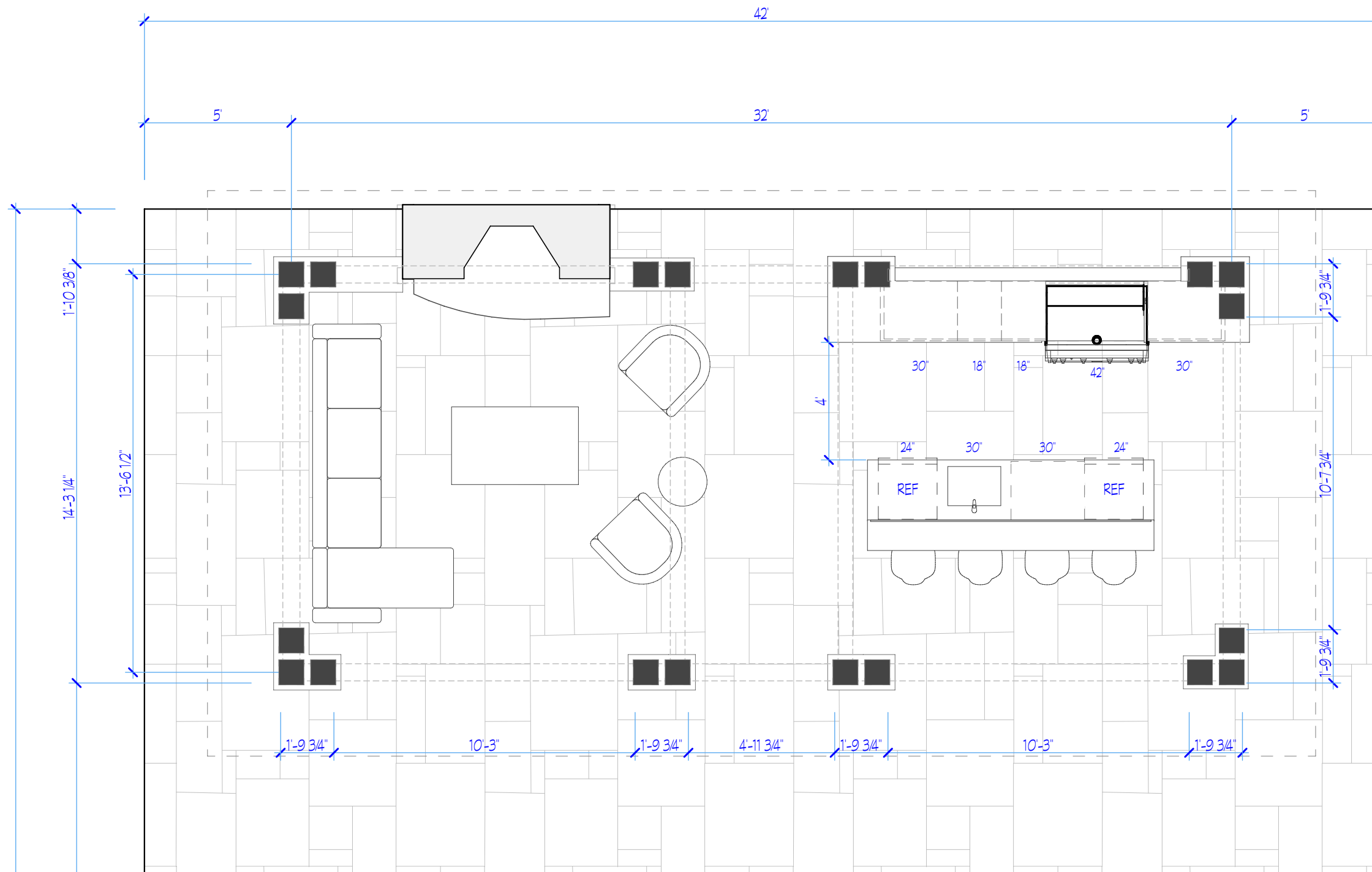
1/2" = 1'-0"



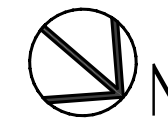
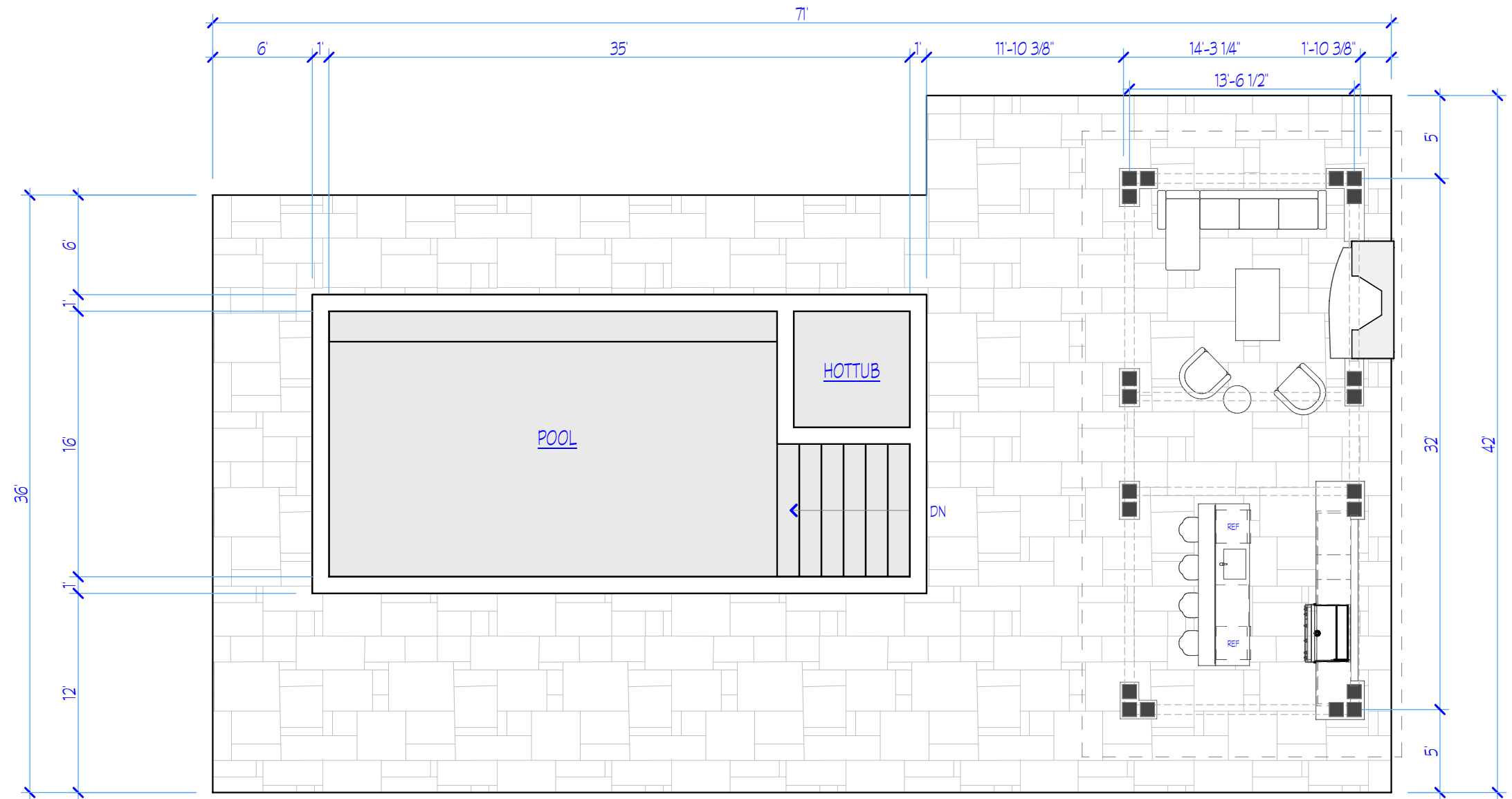
SINK SIDE ELEVATION

1/2" = 1'-0"





SCHEME A PLAN



SCHEME A PLAN