

EVERSOURCE APPROVED

NAME: _____
 SIGNED: _____
 DATE: _____

CLIENT/OWNER APPROVED

NAME: _____
 SIGNED: _____
 DATE: _____

CLIENT POST CONSTRUCTION APPROVED

NAME: _____
 SIGNED: _____
 DATE: _____

EVERSOURCE ENERGY

ELECTRIC VEHICLE CHARGING STATIONS

SITE NAME: TOWN OF CHILMARK, 520 SOUTH ROAD, CHILMARK, MA 02535

SITE TYPE: EV INFRASTRUCTURE ELECTRICAL SPECIAL 277/480V OPTION

JURISDICTION: DUKES COUNTY



1 Westinghouse Plaza,
 Suite D6, Boston,
 Massachusetts, 02136
 +1 617-361-6700



800 Boylston St,
 Boston,
 Massachusetts, 02199
 +1 800-592-2000

PROJECT NO: 10-19-0005.415

DRAWN BY: M.G.

CHECKED BY: D.C.

REV	DATE	DESCRIPTION
0	08/02/2022	ISSUED FOR REVIEW

IT IS A VIOLATION OF THE LAW FOR ANY PERSON, UNLESS THEY ARE ACTING UNDER THE DIRECTION OF A LICENSED PROFESSIONAL ENGINEER, TO ALTER THIS DOCUMENT

TOWN OF CHILMARK, 520 SOUTH ROAD, CHILMARK, MA 02535

ELECTRIC VEHICLE CHARGING STATIONS

SHEET TITLE
TITLE SHEET & PROJECT DATA

SHEET NUMBER
T-1

SITE INFORMATION

PROPOSED EV SITE ADDRESS: 520 SOUTH ROAD, CHILMARK, MA02535

PROPERTY OWNER: TOWN OF CHILMARK

EQUIPMENT SUPPLIER: MERRIMAC INDUSTRIAL

POWER COMPANY: EVERSOURCE ENERGY

JURISDICTION: DUKES COUNTY

LATITUDE: 41°20'30.21"N
 LONGITUDE: 70°44'39.79"W

CONTACT ENGINEER: SEAN TULLY

EVERSOURCE SUPPLY TRANSFORMER: #TBD

EVERSOURCE WO#: TBD

AREA MAP



LOCATION MAP



IMPORTANT SITE NOTES

THE EXISTING CONDITIONS REPRESENTED HEREIN ARE BASED ON VISUAL OBSERVATIONS AND INFORMATION PROVIDED BY OTHERS. THE CONTRACTOR SHALL VISIT THE SITE AND VERIFY ALL EXISTING CONDITIONS PRIOR TO CONSTRUCTION. REPORT ALL CONFLICTS OR DISCREPANCIES PRIOR TO CONSTRUCTION.

DO NOT SCALE DRAWINGS

CONTRACTOR SHALL VERIFY ALL PLANS, EXISTING DIMENSIONS & CONDITIONS ON THE JOB SITE & SHALL IMMEDIATELY NOTIFY THE ENGINEER IN WRITING OF ANY DISCREPANCIES BEFORE PROCEEDING WITH THE WORK

SCOPE OF WORK

MAKE READY INSTALLATION FOR ELECTRIC VEHICLE CHARGING STATIONS AND ASSOCIATED SUPPORT EQUIPMENT AT GROUND AND UNDERGROUND LEVEL

APPLICABLE CODES

ALL WORK SHALL COMPLY WITH THE FOLLOWING APPLICABLE CODES: MA STATE BUILDING CODE, 9TH EDITION
 MA STATE PLUMBING CODE
 MA STATE MECHANICAL CODE
 MA ELECTRICAL CODE
 MA FIRE PREVENTION REGULATIONS
 IN THE EVENT OF CONFLICT, THE MOST RESTRICTIVE CODE SHALL PREVAIL

DRAWING INDEX

SHEET NO.	SHEET TITLE
T-1	TITLE SHEET & PROJECT DATA
C-1	AERIAL SITE VIEW
C-2	PROPOSED GROUND LEVEL SITE VIEW
C-3	PROPOSED SITE PLAN
C-4	EVERSOURCE SKETCH
D-1	INSTALLATION DETAILS
L-1	LEGEND AND NOTES
E-1	EV INFRASTRUCTURE RISER DIAGRAMS
E-2	EV INFRASTRUCTURE RISER DIAGRAMS
E-3	ELECTRICAL DETAILS SHEET 1
E-4	ELECTRICAL DETAILS SHEET 2
E-5	ELECTRICAL DETAILS SHEET 3
E-6	ELECTRICAL DETAILS SHEET 4
E-7	ELECTRICAL DETAILS SHEET 5
GN-1	GENERAL NOTES
GN-2	GENERAL NOTES
GN-3	GENERAL NOTES

ARCHITECT/ENGINEER



One Westinghouse Plaza,
 Suite D6, Boston,
 Massachusetts, 02136

CALL BEFORE YOU DIG

UNDERGROUND SERVICE ALERT
 UTILITY NOTIFICATION CENTER OF MASSACHUSETTS
 811 OR +1 888-344-7233
 3 WORKING DAYS UTILITY NOTIFICATION PRIOR TO CONSTRUCTION



DIGSAFE MARKED:

DIGSAFE CALLED IN:

DIGSAFE NUMBER: _____

START DATE: _____

EXPIRY DATE: _____

IMPORTANT NOTICE

THE EXISTING CONDITIONS REPRESENTED HEREIN ARE BASED ON VISUAL OBSERVATIONS AND INFORMATION PROVIDED BY OTHERS. THE CONTRACTOR SHALL VISIT THE SITE AND VERIFY ALL EXISTING CONDITIONS PRIOR TO CONSTRUCTION. REPORT ALL CONFLICTS OR DISCREPANCIES PRIOR TO CONSTRUCTION.

EV CHARGING STATIONS INSTALLED BY OWNER UNDER SEPERATE CONTRACT



EVERSOURCE SUPPLY POLE #TBD

PROPOSED RISER

INSTALL ~119' OF 1 EA. 4" SCHEDULE 40 PVC CONDUIT BETWEEN SUPPLY POLE AND TRANSFORMER ENCLOSURE VIA TRENCH

SUPPLY TRANSFORMER PMH #TBD

INSTALL ~109' OF 1 EA. 3" SCHEDULE 80 PVC CONDUIT BETWEEN SUPPLY TRANSFORMER AND CONTROL BOX ENCLOSURE VIA TRENCH

PROPOSED 36"x6" BOLLARDS

PROPOSED DUAL DCFC STATION

PROPOSED CONTROL BOX ENCLOSURE

INSTALL ~12' OF 1 EA. 2" SCHEDULE 40 PVC CONDUIT BETWEEN HANDHOLE AND DUAL CHARGING STATION VIA TRENCH

INSTALL ~19' OF 1 EA. 3" SCHEDULE 40 PVC CONDUIT BETWEEN CONTROL BOX ENCLOSURE AND HANDHOLE VIA TRENCH

PROPOSED 17"x30"x18" HANDHOLE

MAVERICK

1 Westinghouse Plaza,
Suite D6, Boston,
Massachusetts, 02136
+1 617-361-6700

EVERSOURCE ENERGY

800 Boylston St,
Boston,
Massachusetts, 02199
+1 800-592-2000

PROJECT NO: 10-19-0005.415

DRAWN BY: M.G.

CHECKED BY: D.C.

REV	DATE	DESCRIPTION
0	08/02/2022	ISSUED FOR REVIEW

IT IS A VIOLATION OF THE LAW FOR ANY PERSON, UNLESS THEY ARE ACTING UNDER THE DIRECTION OF A LICENSED PROFESSIONAL ENGINEER, TO ALTER THIS DOCUMENT

TOWN OF CHILMARK, 520 SOUTH ROAD, CHILMARK, MA 02535

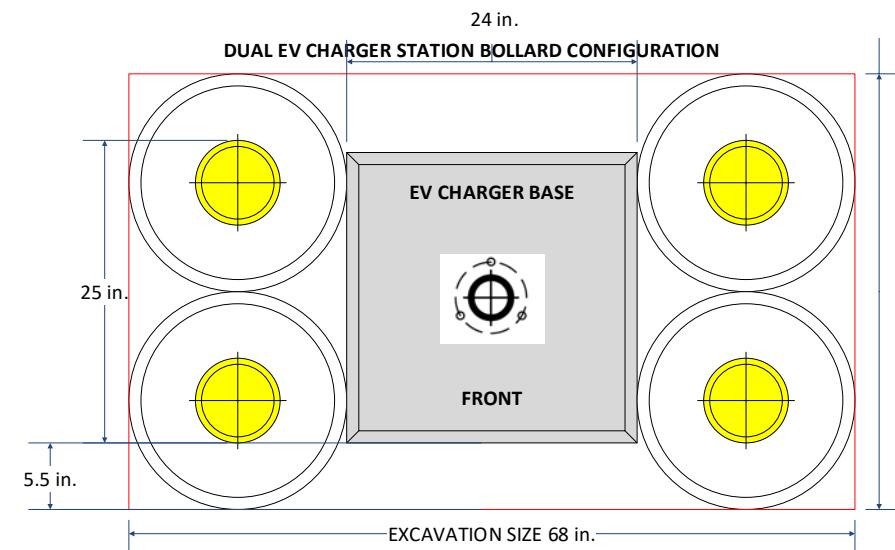
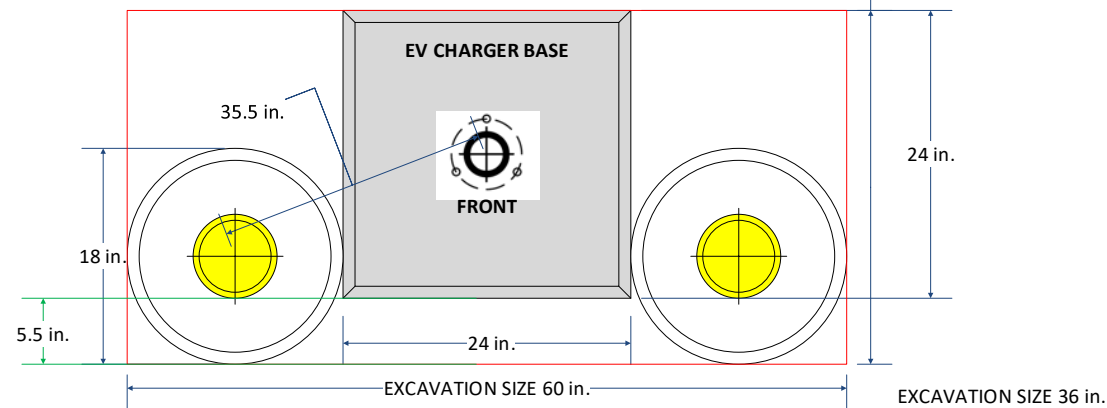
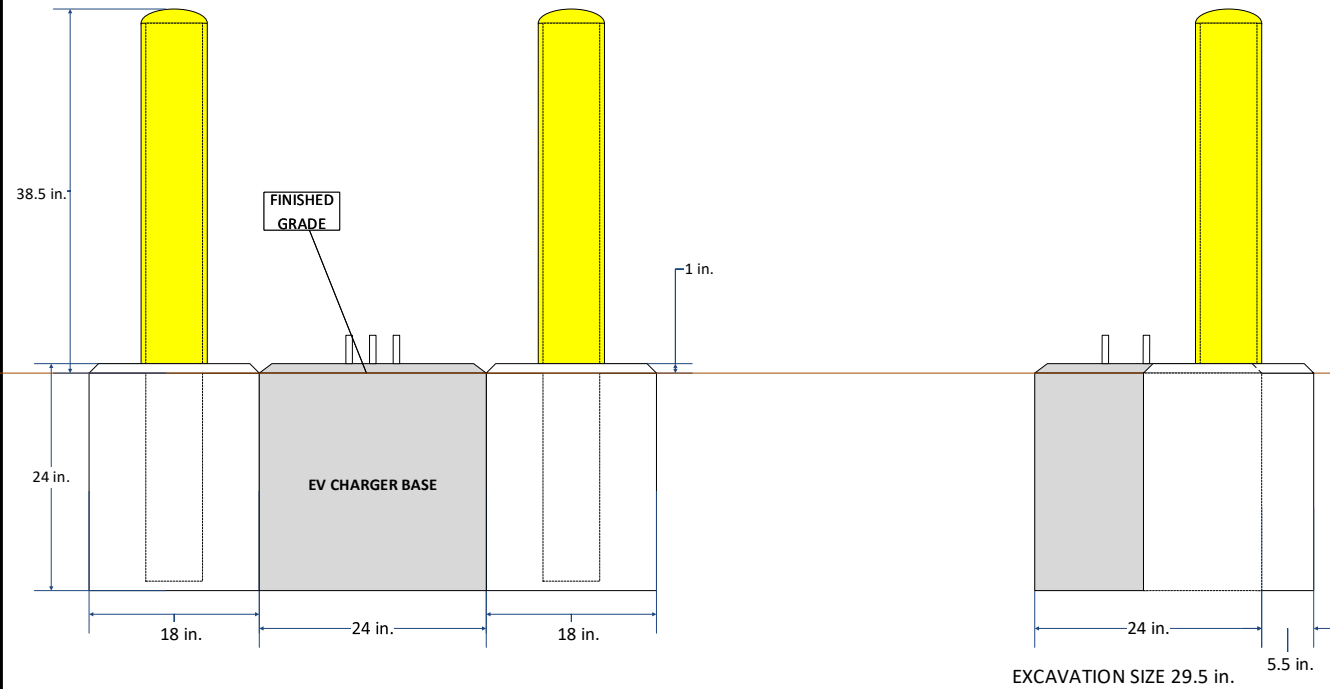
ELECTRIC VEHICLE CHARGING STATIONS

SHEET TITLE
PROPOSED SITE PLAN

SHEET NUMBER
C-3

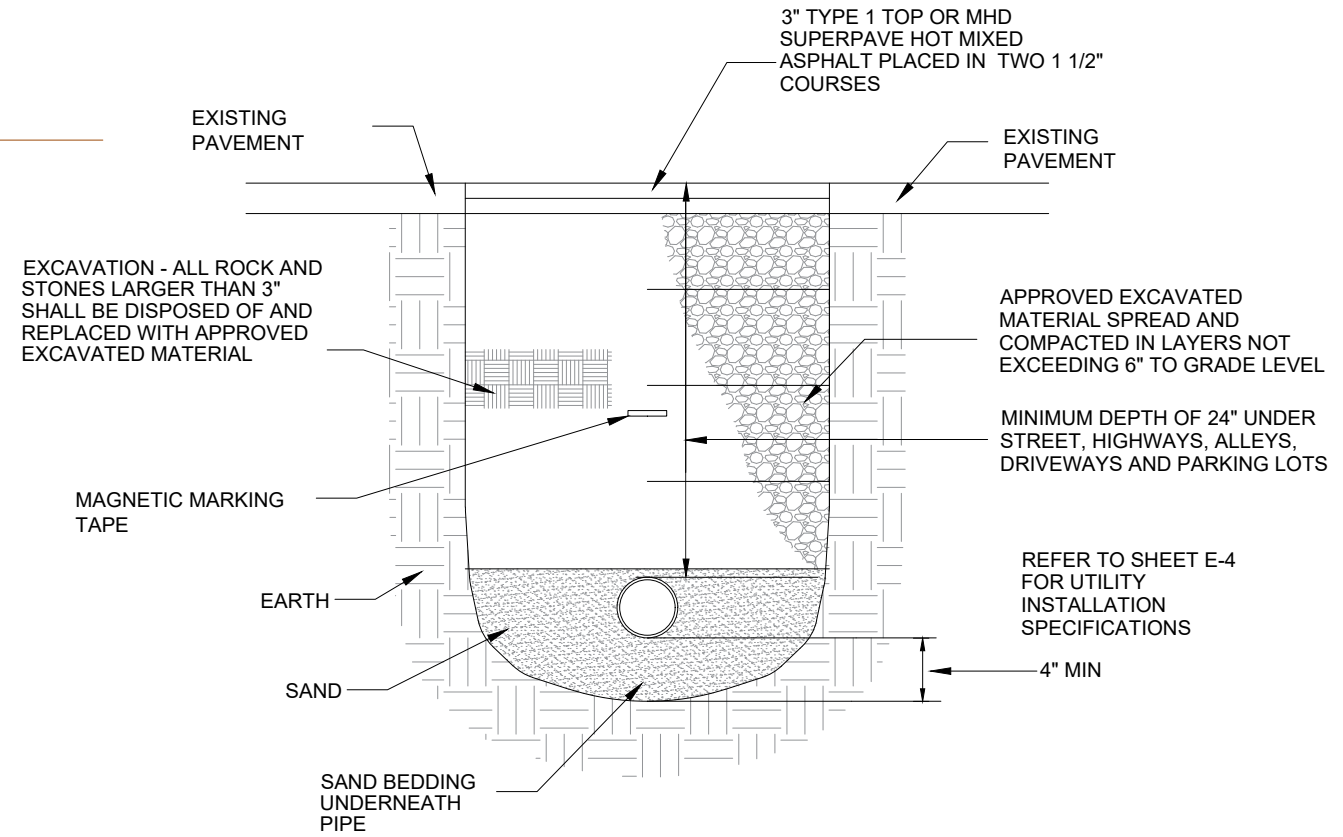
Note: Not for construction

TYPICAL BOLLARD INSTALLATION *SUBJECT TO VARIATIONS DUE TO SITE CONDITIONS



QUADRUPLE EV CHARGER STATION BOLLARD CONFIGURATION

PAVEMENT RESTORATION



1. THE CONTRACTOR SHALL BE RESPONSIBLE FOR PLACING AND MAINTAINING RESURFACING AND/OR PLATING FOR ALL EXCAVATIONS IN PAVED STREETS AND SIDEWALKS UNTIL PERMANENT RESURFACING IS COMPLETE.
2. JOINTS BETWEEN NEW BITUMINOUS CONCRETE ROADWAY PAVEMENT AND SAWCUT EXISTING PAVEMENT SHALL BE SEALED WITH BITUMEN AND BACKSANDED.
3. THE CONTRACTOR SHALL REPLACE ALL DISTURBED TRAFFIC SIGNAL LOOP DETECTORS TO GOOD WORKING CONDITION AS REQUIRED BY THE LATEST STANDARDS OF THE MUNICIPAL TRAFFIC DEPARTMENT.
4. THE CONTRACTOR SHALL REPLACE ALL PAVEMENT MARKINGS IN THEIR ENTIRETY THAT HAVE BEEN DAMAGED BY TRENCH EXCAVATION OR OPERATIONS OF THE CONTRACTOR WITH SIMILAR COLOR AND SIZE THERMOPLASTIC MARKINGS.



1 Westinghouse Plaza,
Suite D6, Boston,
Massachusetts, 02136
+1 617-361-6700



800 Boylston St,
Boston,
Massachusetts, 02199
+1 800-592-2000

PROJECT NO:	10-19-0005.415
DRAWN BY:	M.G.
CHECKED BY:	D.C.

REV	DATE	DESCRIPTION
0	08/02/2022	ISSUED FOR REVIEW

IT IS A VIOLATION OF THE LAW FOR ANY PERSON, UNLESS THEY ARE ACTING UNDER THE DIRECTION OF A LICENSED PROFESSIONAL ENGINEER, TO ALTER THIS DOCUMENT

TOWN OF CHILMARK, 520
SOUTH ROAD, CHILMARK,
MA 02535

ELECTRIC VEHICLE
CHARGING STATIONS

SHEET TITLE
INSTALLATION DETAILS

SHEET NUMBER
D-1

ABBREVIATIONS			
A	AMPERE	MFR.	MANUFACTURER
AFCI	ARC-FAULT CIRCUIT INTERRUPTOR	MG SET	MOTOR-GENERATOR SET
AFF	ABOVE FINISHED FLOOR	MDI	MUSICAL INSTRUMENT DIGITAL INTERFACE
AHJ	AUTHORITY HAVING JURISDICTION	MISC	MISCELLANEOUS
AIC	AMPERE INTERRUPTING CURRENT	MLO	MAN LIVES ONLY
AI	ALUMINUM	MSHA	MINES SAFETY AND HEALTH ADMINISTRATION
ANSI	AMERICAN NATIONAL STANDARDS INSTITUTES	MTD	MOUNTED
ATS	AUTOMATIC TRANSFER SWITCH	MW	MEGAWATTS
AWG	AMERICAN WIRE GAUGE	NC	NORMALLY CLOSED
CONDUIT	CONDUIT	NEC	NATIONAL ELECTRICAL CODE
CATV	COMMUNITY ANTENNA TELEVISION	NECA	NATIONAL ELECTRICAL CONTRACTORS ASSOCIATION
CB	CIRCUIT BREAKER	NEMA	NATIONAL ELECTRICAL MANUFACTURERS ASSOCIATION
CIT	CIRCUIT	NESCC	NATIONAL ELECTRICAL SAFETY CODE
cmil	CIRCULAR MIL	NFPA	NATIONAL FIRE PROTECTION ASSOCIATION
CO/ALR	COPPER-ALUMINUM, REVISED	NOT IN CONTRACT	NOT IN CONTRACT
COPS	CRITICAL OPERATIONS POWER SYSTEMS	NIU	NETWORK INTERFACE UNIT
CSA	CANADIAN STANDARDS ASSOCIATION	NO	NORMALLY OPEN
Cu	COPPER	NPT	NATIONAL (AMERICAN) STANDARD PIPE TAPER
DIA.	DIAMETER	NRTL	NATIONALLY RECOGNIZED TESTING LABORATORIES
DDOA	DESIGNATED CRITICAL OPERATIONS AREAS	NTS	NOT TO SCALE
DS	DISCONNECT SWITCH	NUCC	NONMETALLIC UNDERGROUND CONDUIT WITH CONDUCTORS
EC	ELECTRICAL CONTRACTOR	OCPP	OVERCURRENT PROTECTIVE DEVICE
ECC	EQUIPMENT GROUNDING CONDUCTOR	ONT	OPTICAL NETWORK TERMINAL
EMF	ELECTROMOTIVE FORCE	P	POLE
EMT	ELECTRICAL METALLIC TUBING	PB	PULLBOX OR PUSHBUTTON
ENT	ELECTRICAL NONMETALLIC TUBING	PCS	POWER CONVERSION SYSTEM
EPO	EMERGENCY POWER OFF	PCU	POWER-CONDITIONING UNIT
ESS	ENERGY STORAGE SYSTEM	PE	POLYETHYLENE
EV	ELECTRIC VEHICLE	PF	POWER FACTOR
EVPE	ELECTRIC VEHICLE POWER EXPORT EQUIPMENT	PHEV	PLUG-IN HYBRID ELECTRIC VEHICLE
EVSE	ELECTRIC VEHICLE SUPPLY EQUIPMENT	PLC	PROGRAMMABLE LOGIC CONTROLLER
F	FUSE	PLFA	POWER-LIMITED FIRE ALARM
FLA	FULL-LOAD AMPERES	PNE	PANEL
FMC	FLEXIBLE METAL CONDUIT	PoE	POWER OVER ETHERNET
FMT	FLEXIBLE METAL TUBING	PWR	POWER
FT	FEET	RMC	RIGID METAL CONDUIT
FURN.	FURNISHED	RMS	ROOT-MEAN-SQUARE
GC	GENERAL CONTRACTOR	RNC	RIGID NONMETALLIC CONDUIT
GEC	GROUNDING ELECTRODE CONDUCTOR	RNMIC	RIGID NON-METALLIC CONDUIT
GF	GROUND FAULT	RPM	REVOLUTIONS PER MINUTE
GF I	GROUND-FAULT INTERRUPTER	RTRC	REINFORCED THERMOSETTING RESIN CONDUIT
GFPE	GROUND-FAULT PROTECTION OF EQUIPMENT	SCADA	SUPERVISORY CONTROL AND DATA ACQUISITION
GND	GROUND	SCR	SILICON CONTROLLED RECTIFIER
HACR	HEATING, AIR CONDITIONING, AND REFRIGERATION	SI	INTERNATIONAL SYSTEM OF UNITS
HDPE	HIGH DENSITY POLYETHYLENE	SP	SPARE
HGT.	HEIGHT	SPD	SURGE-PROTECTIVE DEVICE
HID	HIGH INTENSITY DISCHARGE	SW	SWITCH
HOA	HAND, OFF, AUTOMATIC SWITCH	SWD	SWITCHING DUTY
HP	HORSEPOWER	SYM	SYMMETRICAL
HVAC	HEATING, VENTILATION, AND AIR CONDITIONING	TEFC	TOTALLY ENCLOSED FAN-COOLED
Hz	HERTZ (CYCLE PER SECOND)	TEMP	TEMPERATURE
IAEI	INTERNATIONAL ASSOCIATIONS OF ELECTRICAL INSPECTORS	TMCB	THERMAL MAGNETIC CIRCUIT BREAKER
IBT	INTERSYSTEM BONDING TERMINATION	TR	TAMPER-RESISTANT
IEC	INTERNATIONAL ELECTROTECHNICAL COMMISSION	TVSS	TRANSIENT VOLTAGE SURGE SUPPRESSOR
IEEE	INSTITUTE OF ELECTRICAL ELECTRONICS ENGINEERS	TYP.	TYPICAL
IG	ISOLATED GROUND	UL	UNDERWRITERS LABORATORIES
IG	INTERMEDIATE METAL CONDUIT	ULPS	UNINTERRUPTIBLE POWER SUPPLY
IS	INTRINSICALLY SAFE	USB	UNIVERSAL SERIAL BUS
ITE	INFORMATION TECHNOLOGY EQUIPMENT	V	VOLT
JB	JUNCTION BOX	VA	VOLT-AMPERE
kcmil	ONE THOUSAND CIRCULAR MILS	V ac	VOLTS ALTERNATING CURRENT
kVA	KILOVOLT-AMPERES	V dc	VOLTS DIRECT CURRENT
kVA _r	KILOVOLT-AMPERES REACTIVE	VFD	VARIABLE FREQUENCY DRIVE
LDI	LEAKAGE-CURRENT DETECTOR-INTERRUPTER	VT	VOLTAGE TRANSFORMER
LED	LIGHT-EMITTING DIODE	WOM	WATT-OHM-MULTIMETER
LFMC	LIQUIDTIGHT FLEXIBLE METAL CONDUIT	W	WATT-HOUR
LFNC	LIQUIDTIGHT FLEXIBLE NONMETALLIC CONDUIT	WPT	WIRELESS POWER TRANSFORMER
LSW	LOAD INTERRUPTER SWITCH	WRT	WEATHER RESISTANT
LNG	LIQUEFIED NATURAL GAS	WR	WEATHER RESISTANT
LP-GAS	LIQUEFIED PETROLEUM GAS	XFMR	TRANSFORMER
LRC	LOCKED-ROTOR CURRENT	Δ	DELTA
MC	MECHANICAL CONTRACTOR	Y	WYE
MCB	MAIN CIRCUIT BREAKER	φ	PHASE
MDC	MODULAR DATA CENTER		

ONE-LINE LEGEND	
	CIRCUIT BREAKER - MOLDED CASE "AF" DENOTES AMPERE FRAME SIZE "AT" DENOTES AMPERE TRIP SETTINGS
	SWITCH AND FUSE "A00AS" DENOTES AMPERE SWITCH SIZE "300AF" DENOTES AMPERE FUSE SIZE
	PRIMARY DISCONNECT SWITCH (BOLTED PRESSURE TYPE)
	AUTOMATIC TRANSFER SWITCH "ATS"
	FUSE
	POWER TRANSFORMER
	WYE
	DELTA
	CURRENT TRANSFORMERS
	GROUND BUS CONNECTION TO EARTH
	SYSTEM GROUND OR EQUIPMENT GROUND
	METER SOCKET
	PRIMARY UTILITY METERING

WIRING DEVICES LEGEND	
	125 VOLT, 2 POLE, 3 WIRE, 20 AMP., DUPLEX RECEPTACLE

GROUNDING LEGEND	
	GROUND ROD - 3/4"x10' COPPER CLAD

EXISTING EQUIPMENT LEGEND	
	EXISTING DEVICE TO BE MAINTAINED
	EXISTING DEVICE TO BE REMOVED AND CIRCUIT PULLED BACK TO POINT OF ORIGIN
	EXISTING DEVICE TO BE RELOCATED
	NEW LOCATION OF EXISTING DEVICE, EXTEND BRANCH/FEEDER CIRCUIT TO NEW LOCATION
	EXISTING DEVICE AND COVER TO BE REMOVED AND REPLACED WITH NEW, MAINTAIN BACK BOX AND CIRCUIT.
	EXISTING DEVICE AND COVER TO BE REMOVED AND REPLACED WITH NEW, MAINTAIN BACK BOX AND PROVIDE A NEW CIRCUIT AS INDICATED.
	EXISTING TO BE REWORKED
	BOLD-DASHED LINEWEIGHT INDICATES TO BE REMOVED
	LIGHT DOT OF FUNCTION LINEWEIGHT INDICATES TO REMAIN AS IS
	BOLD LINEWEIGHT INDICATES NEW OR AFFECTED WORK

SITE PLAN LEGEND	
	DUCTBANK "UC" INDICATES UNDERGROUND
	ELECTRIC UTILITY MANHOLE "U" DENOTES UTILITY "SKY" DENOTES 15KV CAMPUS LOOP "T" DENOTES TELECOMMUNICATION
	HANDHOLE

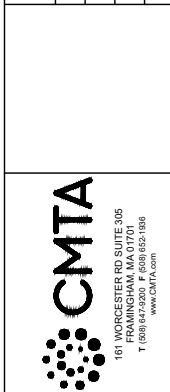
LEGEND NOTES	
1.	SUBSCRIPTS ILLUSTRATED ON THE LEGEND WITH ONE SYMBOL ONLY TO MINIMIZE SPACE. ANY SUBSCRIPT INDICATED WITH A LEGEND FAMILY MAY BE APPLIED TO A CORRESPONDING SYMBOL.
2.	ABBREVIATIONS SUCH AS "WP" MAY BE APPLIED TO ANY SYMBOL.

GENERAL NOTES	
1.	THE SCOPE OF WORK SHALL INCLUDE ALL WORK INDICATED UNLESS OTHERWISE SPECIFICALLY INDICATED AS EXISTING OR WORK BY OTHERS, AND COORDINATION WITH ALL TRADES. SCOPE OF WORK IS INDICATED ON THE CONTRACT DOCUMENTS INCLUDING THE DRAWINGS AND THE SPECIFICATIONS, WHICH ARE COMPLIMENTARY. WORK INDICATED IN ANY CONTRACT DOCUMENT SHALL BE CONSIDERED PART OF THE SCOPE OF WORK, UNLESS SPECIFICALLY INDICATED AS EXISTING OR WORK BY OTHERS. IN GENERAL, WORK REQUIREMENTS ARE NOT INDICATED IN BOTH DOCUMENTS. WHERE DOCUMENTS CONFLICT WITH THEMSELVES OR WITH CODES AND REGULATIONS, PROVIDE THE HIGHER QUANTITY AND QUALITY AND FOLLOW THE STRICTER REQUIREMENTS.
2.	WORK, AT A MINIMUM, SHALL BE IN ACCORDANCE WITH OSHA, NFPA STANDARDS, THE ELECTRIC CODE AND THE LOCAL GOVERNING AUTHORITIES. THE DRAWINGS AND SPECIFICATIONS DO NOT ATTEMPT TO INDICATE ALL WORK REQUIRED BY CODES AND AUTHORITIES. DO NOT INSTALL WORK THAT DOES NOT MEET MINIMUM REQUIREMENTS. IF NECESSARY, REQUEST CLARIFICATION FROM ARCHITECT BEFORE PROCEEDING.
3.	IT IS THE INTENT OF THESE PLANS AND SPECIFICATIONS TO PROVIDE A WORKING INSTALLATION IN EVERY DETAIL AND ALL ITEMS REQUIRED FOR SUCH AN INSTALLATION SHALL BE PROVIDED WHETHER OR NOT SPECIFICALLY INDICATED OR MENTIONED.
4.	CONTRACTOR SHALL PAY FOR ALL PERMITS, INSURANCE, AND TESTS, AND SHALL PROVIDE LABOR AND MATERIAL TO COMPLETE THE ELECTRICAL WORK SHOWN.
5.	VISIT THE SITE TO DETERMINE PRE-EXISTING CONDITIONS AND WORK. NECESSARY PRIOR TO SUBMISSION OF BID PRICE. SUBMIT ANY QUESTIONS REQUIRED TO CLARIFY SCOPE PRIOR TO BID. INCLUDE ALL REQUIRED WORK IN BID PRICE.
6.	INCLUDE IN BID WHATEVER IS REQUIRED TO MEET SCHEDULE INCLUDING OVERTIME, EXPRESS SHIPPING, EXPEDITING EQUIPMENT, ETC. PLAN PROJECT AND SUBMIT SHOP DRAWINGS AND ORDER EQUIPMENT IN A TIMELY MANNER, EQUIPMENT SHALL BE BASED ON THE SPECIFIED EQUIPMENT.
7.	ANY EQUIPMENT TO BE SUBSTITUTED SHALL BE IDENTIFIED AT TIME OF BID. REFER TO SPECIFICATIONS.
8.	TEST ALL EQUIPMENT AND SYSTEMS INSTALLED TO CERTIFY COMPLIANCE WITH DRAWINGS, SPECIFICATIONS, CODES, LOCAL AUTHORITIES AND REGULATIONS. INCLUDE LABOR AND COSTS FOR TESTING, REVIEWS, APPROVALS AND CERTIFICATIONS.
9.	ALL CUTTING AND PATCHING REQUIRED FOR ELECTRICAL WORK SHALL BE INCLUDED AS PART OF THIS SECTIONS.
10.	PROVIDE TRAINING TO OWNER ON ALL EQUIPMENT AND SYSTEMS INSTALLED.
11.	ANY BUILDING SYSTEMS THAT MUST BE MODIFIED TO PLACE NEW EQUIPMENT SHALL BE RESTORED TO ITS ORIGINAL CONDITION PRIOR TO THE CONCLUSION OF THE PROJECT, INCLUDING ALL TESTING AND RE-CERTIFICATION REQUIRED TO MEET CODE.
12.	WORK SHALL CONFORM TO THE MASSACHUSETTS ELECTRICAL CODE, NATIONAL ELECTRICAL CODE, AND REQUIREMENTS OF LOCAL AUTHORITIES HAVING JURISDICTION.
13.	BUSWAY AND CONDUIT RUNS AS SHOWN ON THE PLANS ARE DIAGRAMMATIC ONLY; EXACT LOCATION AND METHOD OF SUPPORT SHALL BE DETERMINED IN THE FIELD.
14.	WHERE CONNECTIONS ARE MADE IN EXISTING PANELS, THE PANEL INDEX SHALL BE REVISED TO INDICATE THE NEW LOADS SERVED. NEW CIRCUIT BREAKERS ADDED TO EXISTING PANELS SHALL BE THE SAME FRAME, VOLTAGE RATING AND INTERRUPTING CAPACITY AS EXISTING PANEL AND CIRCUIT BREAKERS.
15.	ELECTRICAL SHUTDOWNS SHALL BE AT A TIME AND DATE APPROVED BY THE OWNER.

WIRING NOTES	
1.	WIRING IS INDICATED ON DRAWINGS ONLY FOR SPECIFIC ROUTES OR SPECIAL CONDITIONS.
2.	FEEDERS SHALL BE IN INDEPENDENT RACEWAYS AND BOXES, UNLESS OTHERWISE INDICATED.
3.	WIRING AND CONDUIT SHALL BE REQUIRED FOR ALL EQUIPMENT, SWITCHES, AND OUTLETS INDICATED WITH CIRCUIT NUMBERS. PROVIDE 3/4"x1/2" UNLESS OTHERWISE INDICATED. WIRE AND CONDUIT SIZES INDICATED ON HOMERUNS SHALL BE CONTINUOUS THROUGHOUT CIRCUIT.
4.	UTILIZE STAINLESS STEEL HARDWARE AND ANCHORS FOR ALL APPLICATIONS AND EQUIPMENT FASTENING.
5.	MARK ALL CONDUITS AND JUNCTION BOXES WITH PERMANENT MARKER INDICATING PANEL AND CIRCUIT NUMBER OF CONDUCTORS CONTAINED WITHIN. LABEL WHERE CONDUITS ENTER PANELS, WIREWAYS, PULLBOXES, ETC. LABEL EMPLY CONDUITS.

EACH BLOCK REPRESENTS ONE FOOT IN THE SCALE INDICATED

DATE	DESCRIPTION	REV.



ELECTRICAL NOTES, LEGEND, AND ABBREVIATIONS

CLIENT: EVERSOURCE, EV MAKE READY
PROJECT: 2020 LEVEL 2 EV MODIFICATIONS



OWNER REVIEW	
SCALE:	AS NOTED
DATE:	TBD
DRAWN BY:	YE
REVIEWED BY:	MOB
JOB NUMBER:	BREV19C
DRAWING NO.	E0.01

MAVERICK

1 Westinghouse Plaza,
Suite D6, Boston,
Massachusetts, 02136
+1 617-361-6700

EVERSOURCE ENERGY

800 Boylston St,
Boston,
Massachusetts, 02199
+1 800-592-2000

PROJECT NO:	10-19-0005.415
DRAWN BY:	M.G.
CHECKED BY:	D.C.

REV	DATE	DESCRIPTION
0	08/02/2022	ISSUED FOR REVIEW

IT IS A VIOLATION OF THE LAW FOR ANY PERSON, UNLESS THEY ARE ACTING UNDER THE DIRECTION OF A LICENSED PROFESSIONAL ENGINEER, TO ALTER THIS DOCUMENT

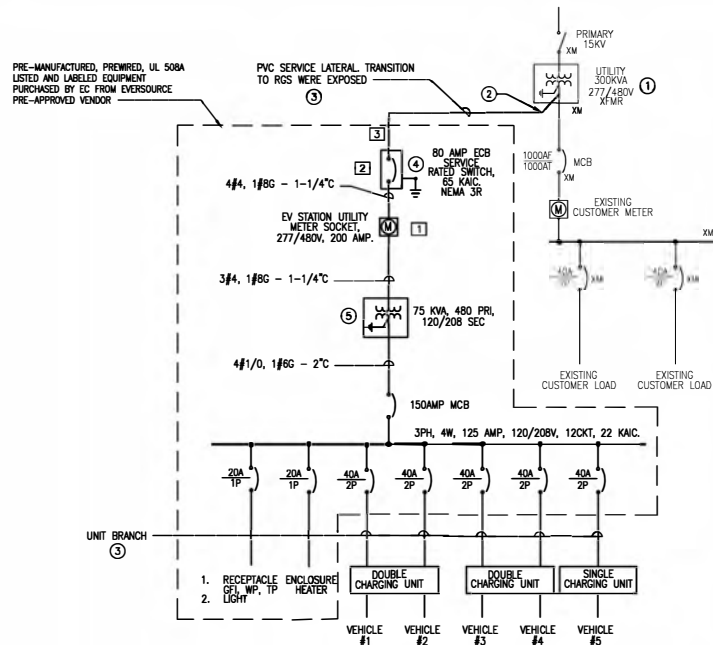
TOWN OF CHILMARK, 520
SOUTH ROAD, CHILMARK,
MA 02535

ELECTRIC VEHICLE CHARGING STATIONS

SHEET TITLE
LEGEND & NOTES

SHEET NUMBER
L-1

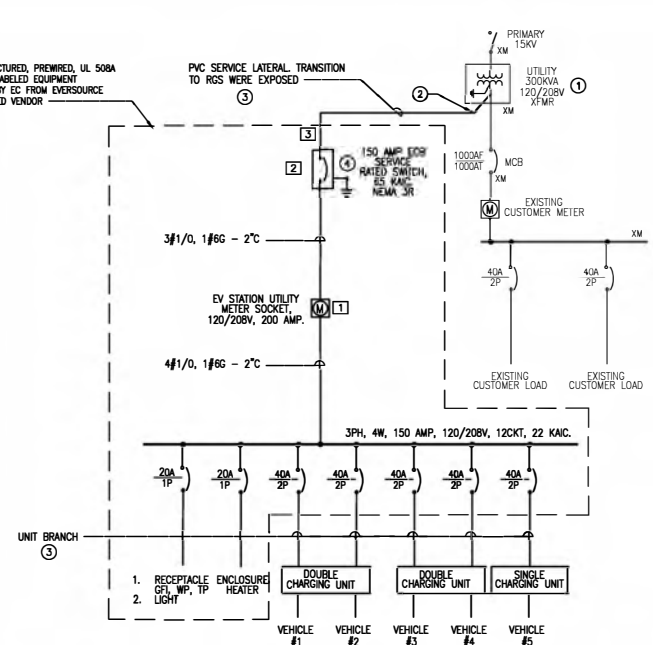
SPECIAL 277/480V OPTION FOR DCFC



- ENCLOSURE MANUFACTURER'S KEY NOTES:
- METER SOCKET SIEMENS #17704-01NU OR EVERSOURCE APPROVED EQUAL.
 - INSTALL METER AND DISCONNECT ON OUTSIDE OF ENCLOSURE. 400 AMP ECB SHALL POSSESS A PRE-WIRED #4/0 MAIN BONDING JUMPER.
 - UTILIZE RGS CONDUIT FOR ALL EXPOSED RACEWAYS CONNECTING TO ENCLOSURE AND RISING UP POLES.

- EC KEY NOTES:
- COORDINATE AVAILABLE CAPACITY WITH UTILITY PRIOR TO INSTALLATION.
 - FURNISH AND INSTALL 90 DEGREE RGS SWEEP AND BONDING BUSHING AT TRANSFORMER. TERMINATION OF CABLE ON TRANSFORMER PERFORMED BY EVERSOURCE.
 - REFER TO CABLE AND CONDUIT SELECTION CHART ON DRAWING E101 FOR CONDUIT AND WIRE SIZING.
 - PROVIDE NEW (1) #4 GROUNDING ELECTRODE CONDUCTOR AT THIS LOCATION. CONNECT TO ENCLOSURE GROUNDING BAR. REFER TO GROUND WIRING DETAIL ON DRAWING E200 FOR ADDITIONAL INFORMATION.
 - PROVIDE NEW (1) #2 GROUNDING ELECTRODE CONDUCTOR AT THIS LOCATION. CONNECT TO ENCLOSURE GROUNDING BAR. REFER TO GROUND WIRING DETAIL ON DRAWING E200 FOR ADDITIONAL INFORMATION.

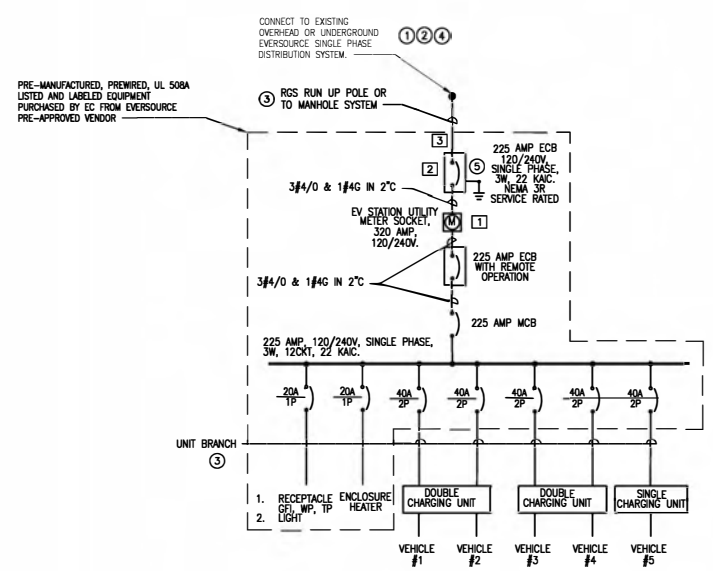
OPTION 1
5 VEHICLES WITH THE USE OF A 480V STEP DOWN PAD MOUNTED TRANSFORMER.



- ENCLOSURE MANUFACTURER'S KEY NOTES:
- METER SOCKET SIEMENS #17704-01NU OR EVERSOURCE APPROVED EQUAL.
 - INSTALL METER AND DISCONNECT ON OUTSIDE OF ENCLOSURE. 400 AMP ECB SHALL POSSESS A PRE-WIRED #4/0 MAIN BONDING JUMPER.
 - UTILIZE RGS CONDUIT FOR ALL EXPOSED RACEWAYS CONNECTING TO ENCLOSURE AND RISING UP POLES.

- EC KEY NOTES:
- COORDINATE AVAILABLE CAPACITY WITH UTILITY PRIOR TO INSTALLATION.
 - FURNISH AND INSTALL 90 DEGREE RGS SWEEP AND BONDING BUSHING AT TRANSFORMER. TERMINATION OF CABLE ON TRANSFORMER PERFORMED BY EVERSOURCE.
 - REFER TO CABLE AND CONDUIT SELECTION CHART ON DRAWING E101 FOR CONDUIT AND WIRE SIZING.
 - PROVIDE NEW (1) #4 GROUNDING ELECTRODE CONDUCTOR AT THIS LOCATION. CONNECT TO ENCLOSURE GROUNDING BAR. REFER TO GROUND WIRING DETAIL ON DRAWING E200 FOR ADDITIONAL INFORMATION.

OPTION 2
5 VEHICLES, NO TRANSFORMER REQUIRED.



- ENCLOSURE MANUFACTURER'S KEY NOTES:
- METER SOCKET SIEMENS #17704-01NU OR EVERSOURCE APPROVED EQUAL.
 - INSTALL METER AND DISCONNECT ON OUTSIDE OF ENCLOSURE. 400 AMP ECB SHALL POSSESS A PRE-WIRED #4/0 MAIN BONDING JUMPER.
 - UTILIZE RGS CONDUIT FOR ALL EXPOSED RACEWAYS CONNECTING TO ENCLOSURE AND RISING UP POLES.

- EC KEY NOTES:
- COORDINATE AVAILABLE CAPACITY WITH UTILITY PRIOR TO INSTALLATION.
 - 500 KVA TRANSFORMER MAXIMUM FOR STANDARD ENCLOSURE UNIT.
 - REFER TO CABLE AND CONDUIT SELECTION CHART ON DRAWING E101 FOR CONDUIT AND WIRE SIZING.
 - UTILIZE RGS CONDUIT FOR ALL EXPOSED RACEWAYS CONNECTING TO ENCLOSURE AND RISING UP POLES. CABLE TERMINATION SHALL BE PERFORMED BY EVERSOURCE.
 - PROVIDE NEW (1) #2 GROUNDING ELECTRODE CONDUCTOR AT THIS LOCATION. CONNECT TO ENCLOSURE GROUNDING BAR. REFER TO GROUND WIRING DETAIL ON DRAWING E200 FOR ADDITIONAL INFORMATION.

OPTION 3
5 VEHICLES FROM A POLE DROP OR EXISTING UNDERGROUND SYSTEM, TRANSFORMER BY UTILITY.

OPTION	NUMBER OF VEHICLES	FLA/VOLT/PH	WIRE SIZE		
			100 FT	200 FT	300 FT
1	5 VEHICLE	54/480/3	4# & 1/4" GND IN 3" C	4# & 1/4" GND IN 3" C	4# & 1/4" GND IN 3" C
2	5 VEHICLE	104/208/3	4# 1/0 & 1/4" GND IN 3" C	4# 2/0 & 1/4" GND IN 3" C	4# 4/0 & 1/4" GND IN 3" C
3	5 VEHICLE	155/240/1	3# 4/0 & 1/4" GND IN 3" C	3# 4/0 & 1/4" GND IN 3" C	3# 250KCMIL & 1/4" GND IN 3" C
4	10 VEHICLE	90/480/3	4# 1/0 & 1/4" GND IN 3" C	4# 1/0 & 1/4" GND IN 3" C	4# 2/0 & 1/4" GND IN 3" C
5	10 VEHICLE	208/208/3	4# 4/0 & 1/4" GND IN 3" C	4# 500KCMIL & 1/4" GND IN 4" C	(2) 4# 1/0 & 1/4" GND IN 4" C
6	10 VEHICLE	330/240/1	3# 600KCMIL & 1/4" GND IN 4" C	(2) 3# 4/0 & 1/4" GND IN 2-1/2" C	(2) 3# 250KCMIL & 1/4" GND IN 3" C
ALL OPTIONS	1 BRANCH CIRCUIT	36/208/1	2# 6 & 1/8" GND IN 2" C	2# 4 & 1/8" GND IN 2" C	2# 2 & 1/8" GND IN 2" C

NOTES:
1. ALL UNDERGROUND WIRING SHALL BE XHHW-2 COPPER WIRE.
2. ABOVE GROUND WIRING SHALL BE THHNW-2 COPPER WIRE.
3. PROVIDE RGS CONDUIT WHEN CABLE RUN IS EXPOSED TO MECHANICAL DAMAGE. PROVIDE EXPANSION FITTINGS AS REQUIRED.

EQUIPMENT	MANUFACTURER OPTION 1	MANUFACTURER OPTION 2
COLD SEQUENCE METER MAIN	KINNEY ELECTRIC	ERICKSON ELECTRIC
IRON CONDUIT BODY	OZ GEDNEY	CROUSE HINDS
MALLEABLE CONDUIT STRAP AND FITTINGS	APLETON	GARVIN
RGS CONDUIT	ALLIED PIPE	REPUBLIC
PVC CONDUIT	CARLON PRODUCTS	NATIONAL PIPE
CONCRETE POLYMER HANDHOLE	MACLEAN	ARMOCAST
CABLE: XHHW-2	SOUTHWIRE	ALLIED
CABLE: THHNW-2	SOUTHWIRE	ALLIED

NOTES:
1. APPROVED EQUAL EQUIPMENTS WILL BE CONSIDERED FOR ALL COMPONENTS.

DATE: _____
DESCRIPTION: _____
REV: _____

CMTA
181 WORCESTER RD SUITE 303
FRAMINGHAM, MA 01901
TEL: (508) 885-1000
WWW.CMTA.COM

LEVEL 2 EV INFRASTRUCTURE RISER DIAGRAMS

CLIENT: EVERSOURCE EV MAKE READY
PROJECT: 2020 LEVEL 2 EV MODIFICATIONS

OWNER REVIEW
SCALE: AS NOTED
DATE: TBD
DRAWN BY: YE
REVIEWED BY: MOB
JOB NUMBER: BEEV19C
DRAWING NO. **E1.00**

MAVERICK

1 Westinghouse Plaza,
Suite D6, Boston,
Massachusetts, 02136
+1 617-361-6700

EVERSOURCE ENERGY

800 Boylston St,
Boston,
Massachusetts, 02199
+1 800-592-2000

PROJECT NO: 10-19-0005.415
DRAWN BY: M.G.
CHECKED BY: D.C.

REV	DATE	DESCRIPTION
0	08/02/2022	ISSUED FOR REVIEW

IT IS A VIOLATION OF THE LAW FOR ANY PERSON, UNLESS THEY ARE ACTING UNDER THE DIRECTION OF A LICENSED PROFESSIONAL ENGINEER, TO ALTER THIS DOCUMENT

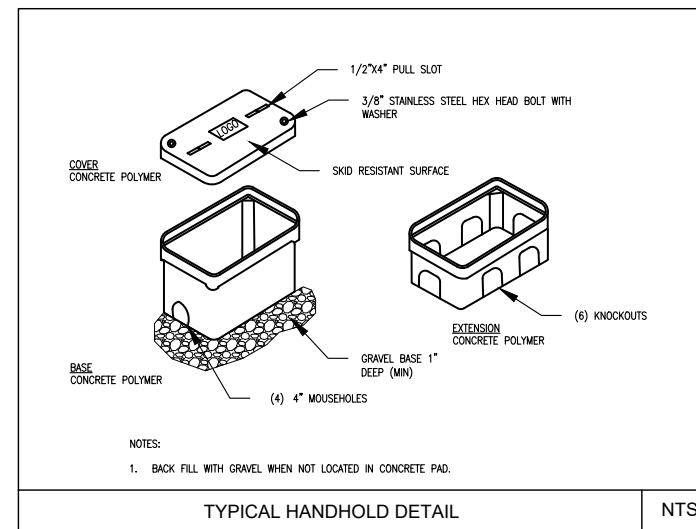
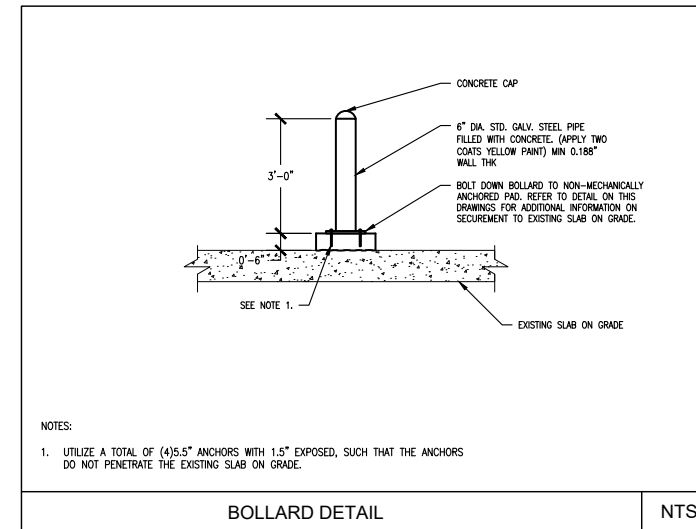
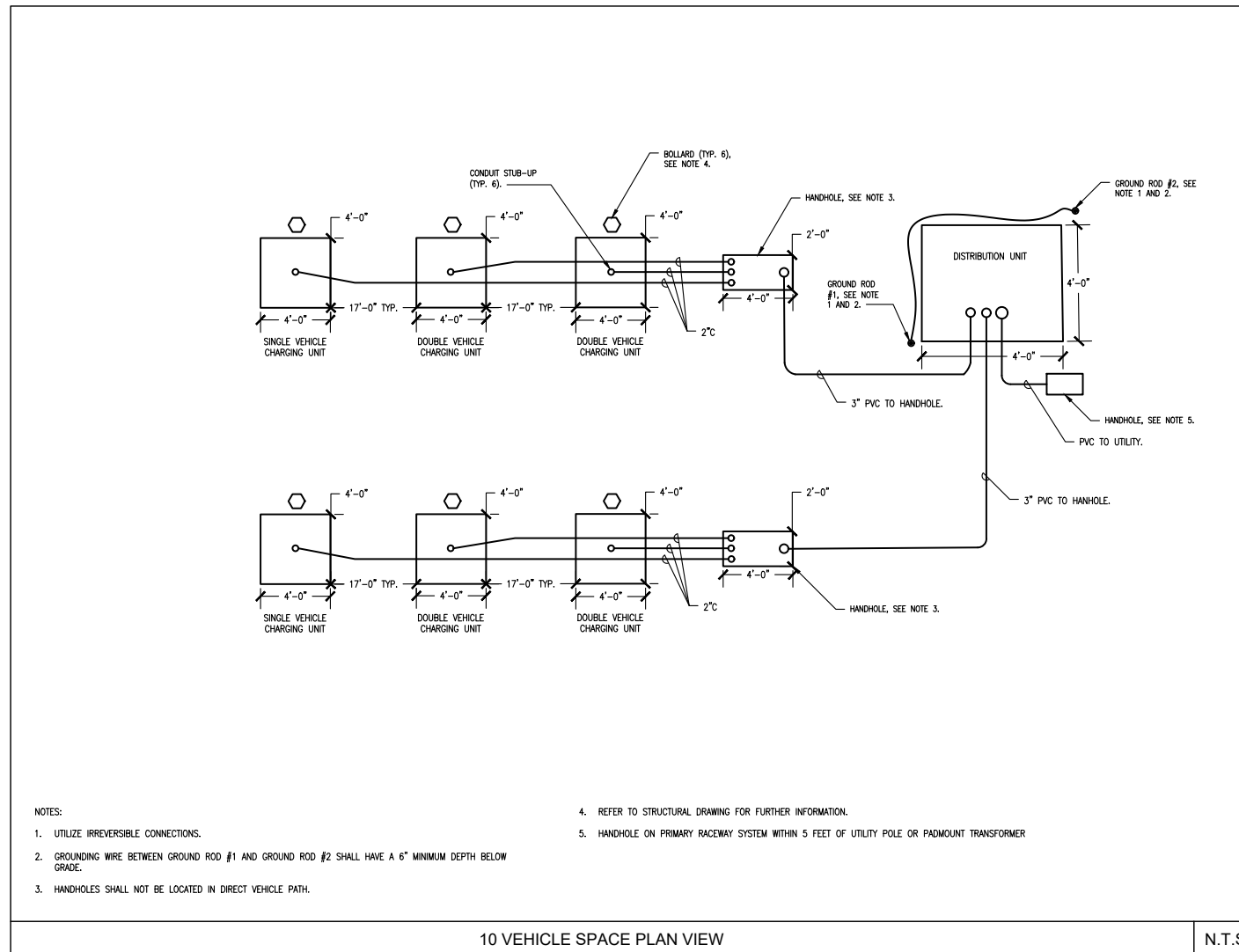
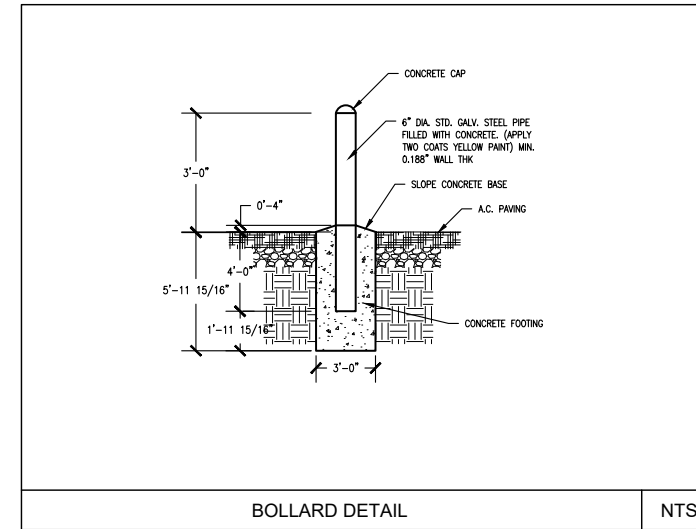
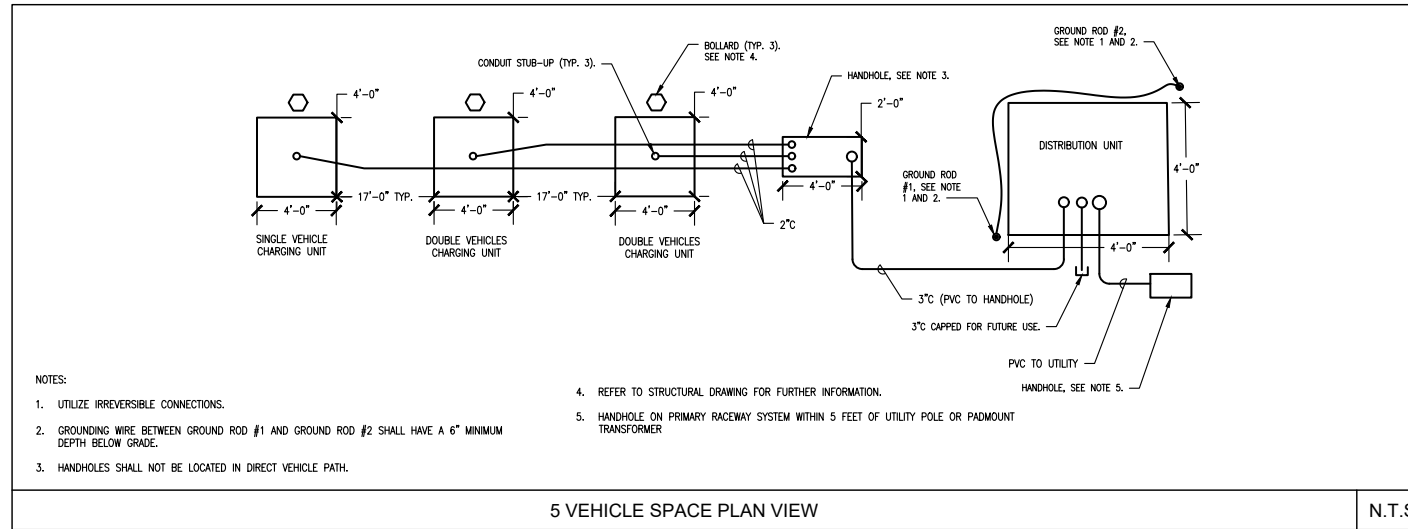
TOWN OF CHILMARK, 520 SOUTH ROAD, CHILMARK, MA 02535

ELECTRIC VEHICLE CHARGING STATIONS

SHEET TITLE
EV INFRASTRUCTURE RISER DIAGRAMS

SHEET NUMBER
E-1

SPECIAL 277/480V OPTION FOR DCFC



 <small>101 WORCESTER ROAD SUITE 206 FRAMINGHAM, MA 01701 TEL: 508-548-1800 FAX: 508-548-1808 www.cmta.com</small>
EV INFRASTRUCTURE ELECTRICAL DETAILS, SHEET 1
CLIENT: EVERSOURCE EV MAKE READY PROJECT: 2020 LEVEL 2 EV MODIFICATIONS
OWNER REVIEW SCALE: AS NOTED DATE: TBD DRAWN BY: YE REVIEWED BY: MOB JOB NUMBER: BEEV19C DRAWING NO. E2.01

1 Westinghouse Plaza,
Suite D6, Boston,
Massachusetts, 02136
+1 617-361-6700

800 Boylston St,
Boston,
Massachusetts, 02199
+1 800-592-2000

PROJECT NO:	10-19-0005.415
DRAWN BY:	M.G.
CHECKED BY:	D.C.

REV	DATE	DESCRIPTION
0	08/02/2022	ISSUED FOR REVIEW

IT IS A VIOLATION OF THE LAW FOR ANY PERSON, UNLESS THEY ARE ACTING UNDER THE DIRECTION OF A LICENSED PROFESSIONAL ENGINEER, TO ALTER THIS DOCUMENT

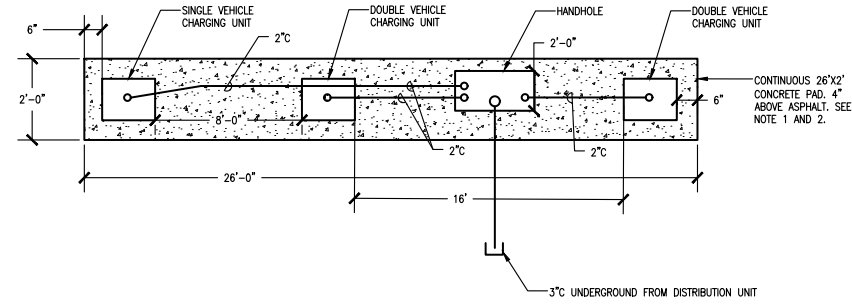
TOWN OF CHILMARK, 520
SOUTH ROAD, CHILMARK,
MA 02535

**ELECTRIC VEHICLE
CHARGING STATIONS**

SHEET TITLE
**ELECTRICAL DETAILS
SHEET 1**

SHEET NUMBER
E-3

SPECIAL 277/480V OPTION FOR DCFC

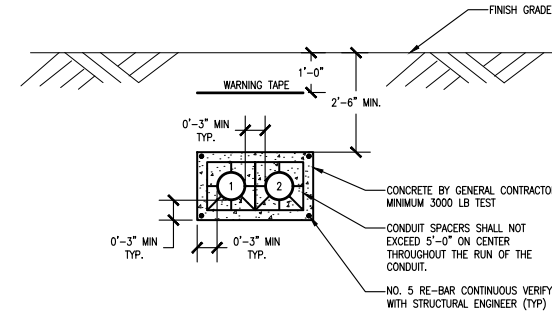


NOTES:

- ADJUST SPACING BETWEEN VEHICLE CHARGING UNITS TO ACCOMMODATE SITE SPECIFIC PARKING SPACES.
- REFER TO STRUCTURAL DRAWINGS FOR FURTHER INFORMATION.

5 VEHICLE CONTINUOUS CONCRETE PAD PLAN VIEW

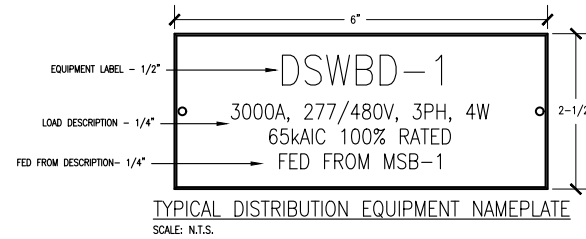
NTS



- ① 4" CONDUIT - ACTIVE ② 4" CONDUIT - ACTIVE

TYPICAL CONCRETE ENCASED DUCT DETAIL

NTS



TYPICAL DISTRIBUTION EQUIPMENT NAMEPLATE
SCALE: N.T.S.

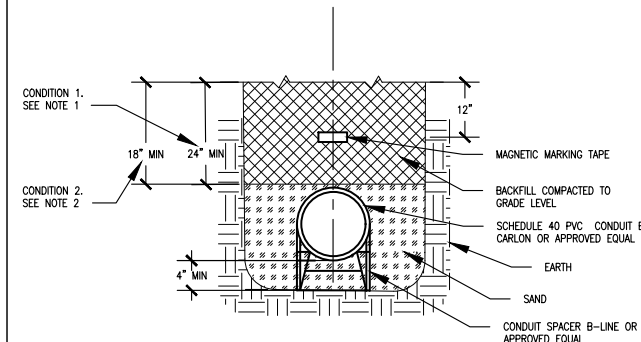
NOTES:

- REFER TO NAMEPLATE COLOR CODE TABLE FOR LETTERING AND FACE COLORS.
- SECURE NAMEPLATE TO SURFACES WITH (2) FLAT HEAD BRASS SCREWS.

NAMEPLATE COLOR CODES		
USE	BACKGROUND	LETTERING
NORMAL	WHITE	BLACK

TYPICAL NAMEPLATE DETAIL

NTS

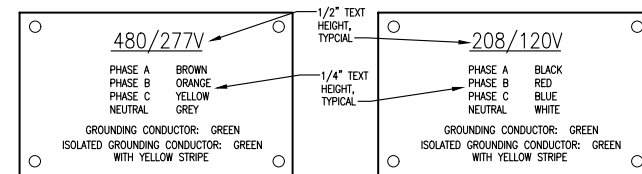


NOTES:

- CONDUIT SHALL BE AT LEAST 24" DEEP WHEN BURIED UNDER STREET, HIGHWAY, ALLEYS, DRIVEWAY, AND PARKING LOTS.
- CONDUIT SHALL BE AT LEAST 18" DEEP WHEN BURIED AT ALL OTHER LOCATIONS.

TYPICAL DIRECT BURIED DUCT BANK DETAIL

NTS

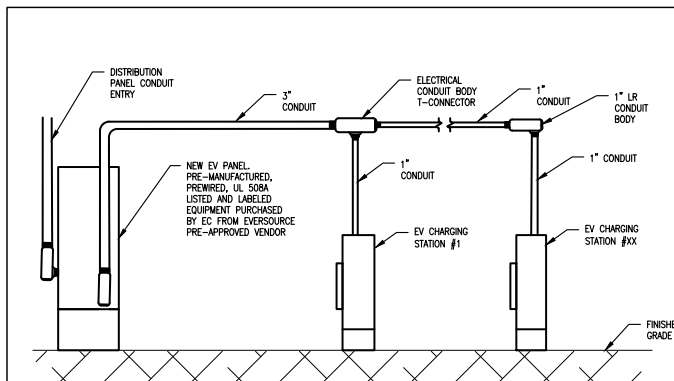


NOTES:

- WITH CONDUCTORS LARGER THAN NO. 6AWG, WRAP TWO FULL TURNS OF 1" WIDE COLORED TAPE AT TWO LOCATIONS (MIN OF 12" APART).
- SECURE NAMEPLATE TO SURFACES WITH (2) FLAT HEAD BRASS SCREWS.

CONDUCTOR COLOR CODING NAMEPLATE

NTS



NOTES:

- REFER TO ONE-LINE DIAGRAM, DRAWING E1.00, FOR ADDITIONAL INFORMATION.
- PROVIDE CONDUIT BODY T-CONNECTOR REDUCING BUSHINGS AS REQUIRED.

TYPICAL ELECTRICAL OVERHEAD CONDUIT ROUTING DETAIL

NTS

1" = 1'-0"
EACH BLOCK REPRESENTS ONE FOOT IN THE SCALE INDICATED

DATE	DESCRIPTION	REV.



EV INFRASTRUCTURE ELECTRICAL DETAILS, SHEET 2

CLIENT: EVERSOURCE EV MAKE READY
PROJECT: 2020 LEVEL 2 EV MODIFICATIONS

OWNER REVIEW

SCALE:	AS NOTED
DATE:	TBD
DRAWN BY:	YE
REVIEWED BY:	MOB
JOB NUMBER:	BREV19C
DRAWING NO.:	E2.02



1 Westinghouse Plaza,
Suite D6, Boston,
Massachusetts, 02136
+1 617-361-6700



800 Boylston St,
Boston,
Massachusetts, 02199
+1 800-592-2000

PROJECT NO: 10-19-0005.415

DRAWN BY: M.G.

CHECKED BY: D.C.

REV	DATE	DESCRIPTION
0	08/02/2022	ISSUED FOR REVIEW

TOWN OF CHILMARK, 520
SOUTH ROAD, CHILMARK,
MA 02535

ELECTRIC VEHICLE
CHARGING STATIONS

SHEET TITLE
ELECTRICAL DETAILS
SHEET 2

SHEET NUMBER

E-4

IT IS A VIOLATION OF THE LAW FOR ANY PERSON, UNLESS THEY ARE ACTING UNDER THE DIRECTION OF A LICENSED PROFESSIONAL ENGINEER, TO ALTER THIS DOCUMENT



EV INFRASTRUCTURE ELECTRICAL DETAILS, SHEET 4

REV	DATE	DESCRIPTION
0	08/02/2022	ISSUED FOR REVIEW

TITLE: EVERSOURCE EV MAKE READY 2020 LEVEL 2 EV MODIFICATIONS

IT IS A VIOLATION OF THE LAW FOR ANY PERSON, UNLESS THEY ARE ACTING UNDER THE DIRECTION OF A LICENSED PROFESSIONAL ENGINEER, TO ALTER THIS DOCUMENT

TOWN OF CHILMARK, 520 SOUTH ROAD, CHILMARK, MA 02535

ELECTRIC VEHICLE CHARGING STATIONS

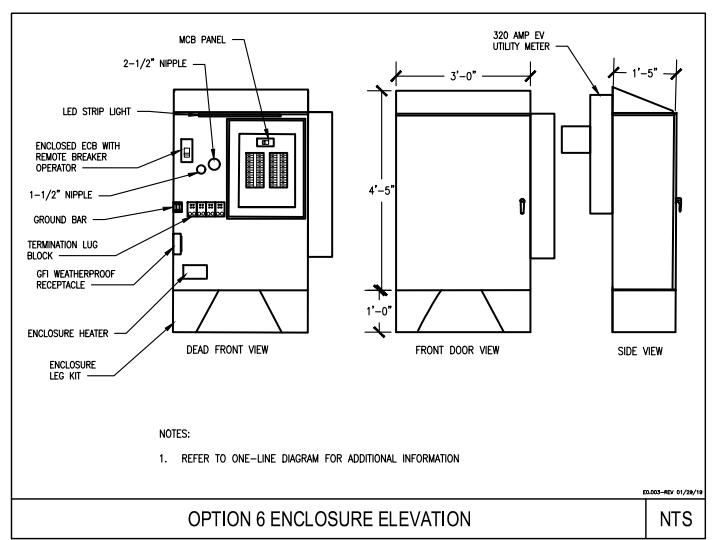
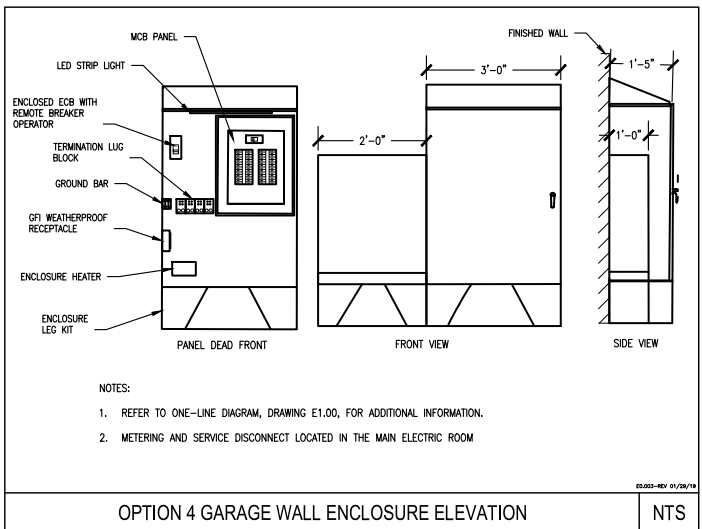
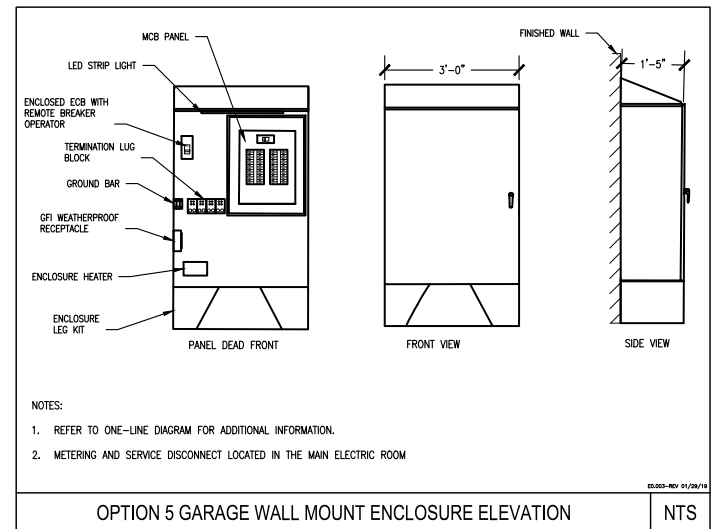
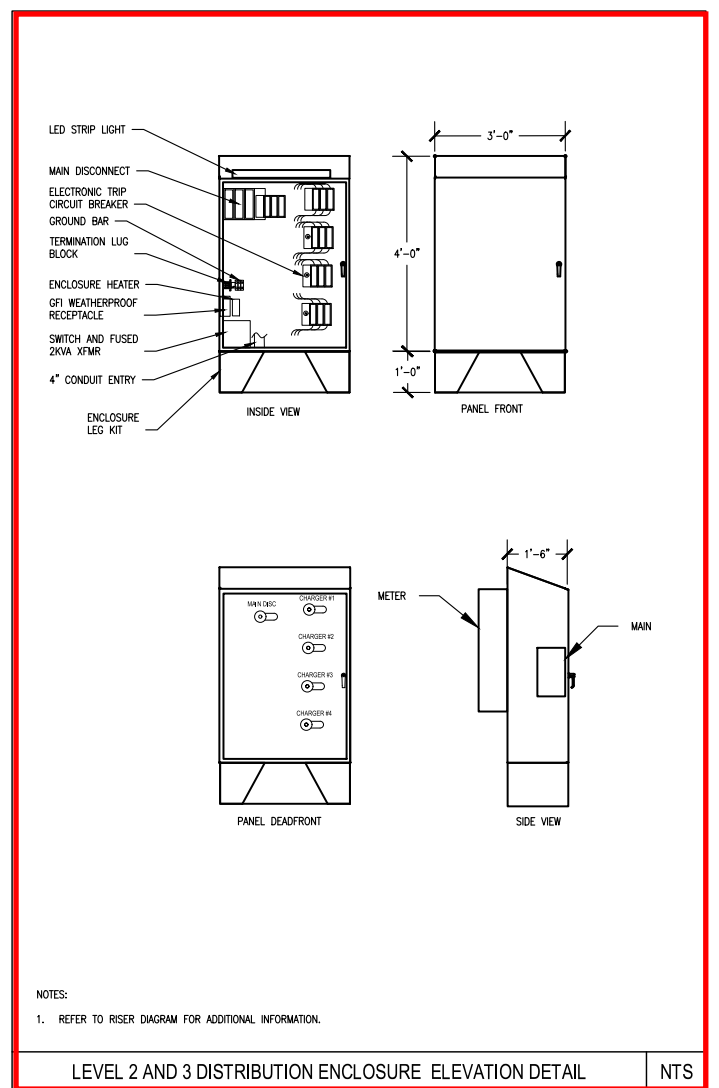
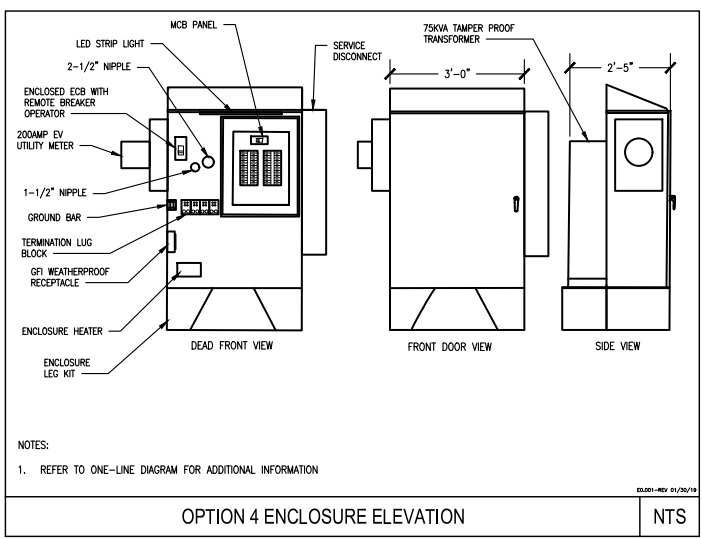
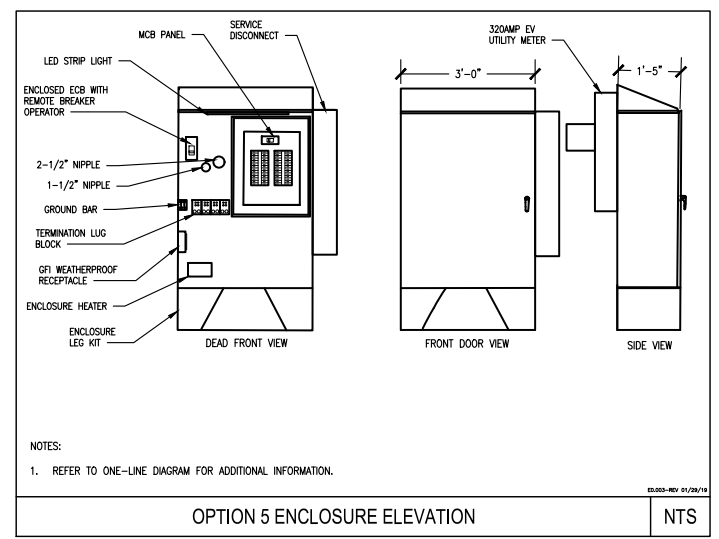
SHEET TITLE
ELECTRICAL DETAILS SHEET 4

SHEET NUMBER

E-6

EACH BLOCK REPRESENTS ONE FOOT IN THE SCALE INDICATED

DATE	DESCRIPTION	REV.



OWNER REVIEW

SCALE:	AS NOTED
DATE:	TBD
DRAWN BY:	YE
REVIEWED BY:	MOB
JOB NUMBER:	BEEV19C
DRAWING NO.	E2.04



EV INFRASTRUCTURE ELECTRICAL DETAILS, SHEET 5

CLIENT: EVERSOURCE EV MAKE READY
PROJECT: 2020 LEVEL 2 EV MODIFICATIONS

OWNER REVIEW

SCALE:	AS NOTED
DATE:	TBD
DRAWN BY:	YE
REVIEWED BY:	MOB
JOB NUMBER:	BEEV19C
DRAWING NO.	E2.05

TOWN OF CHILMARK, 520 SOUTH ROAD, CHILMARK, MA 02535

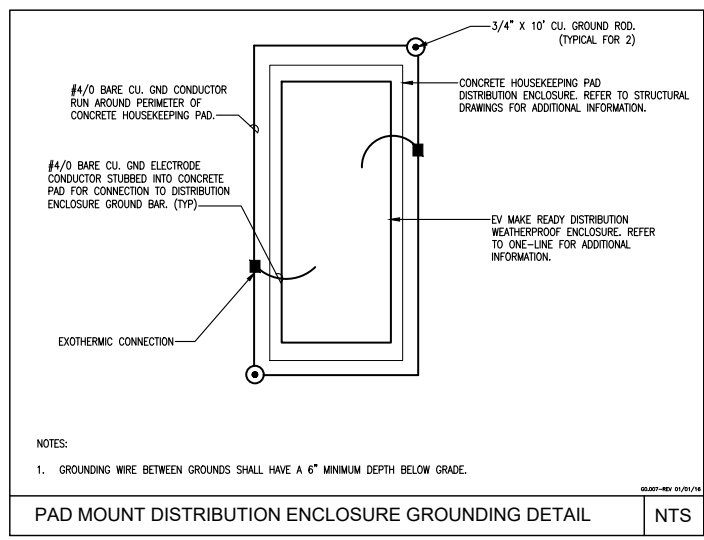
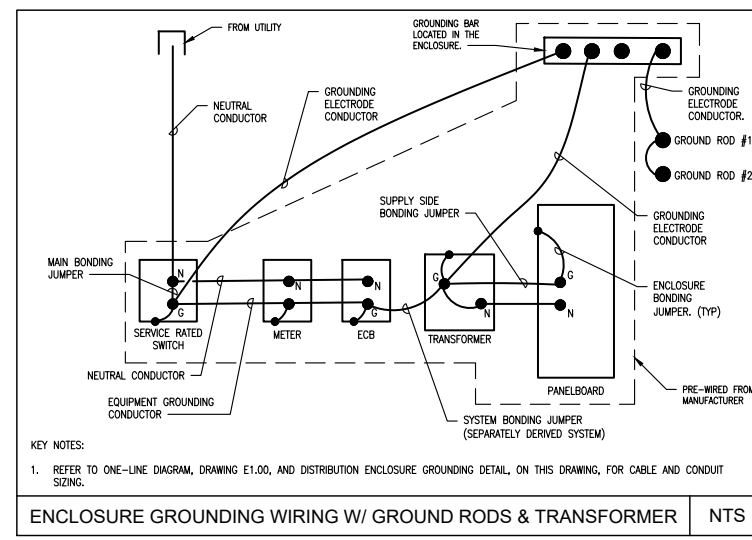
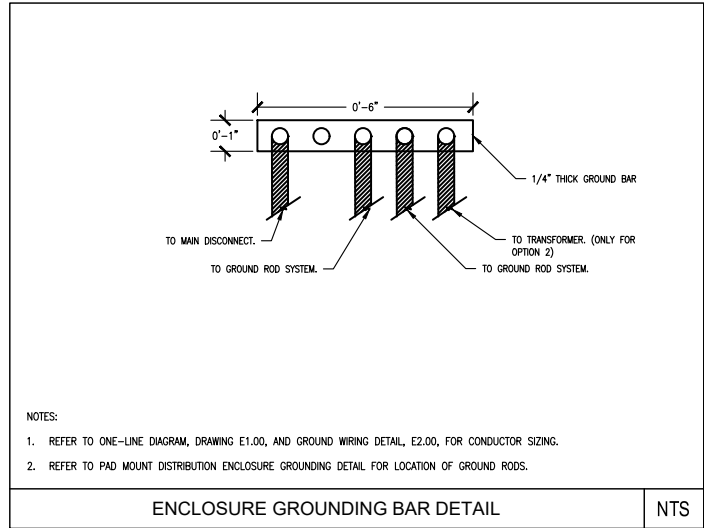
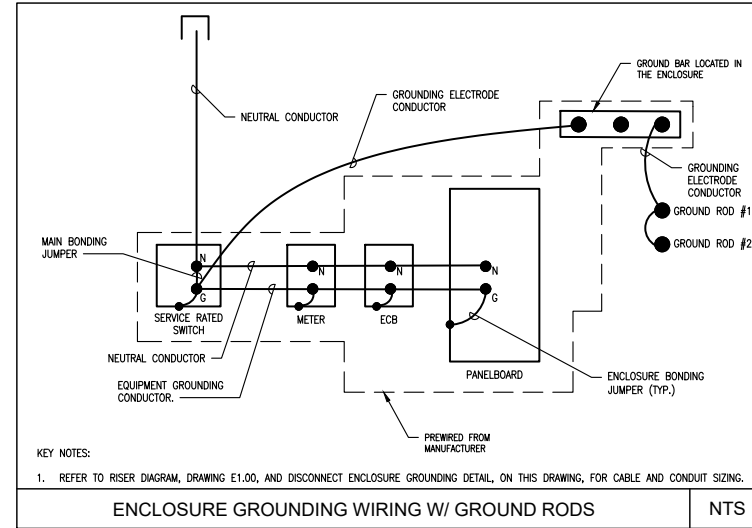
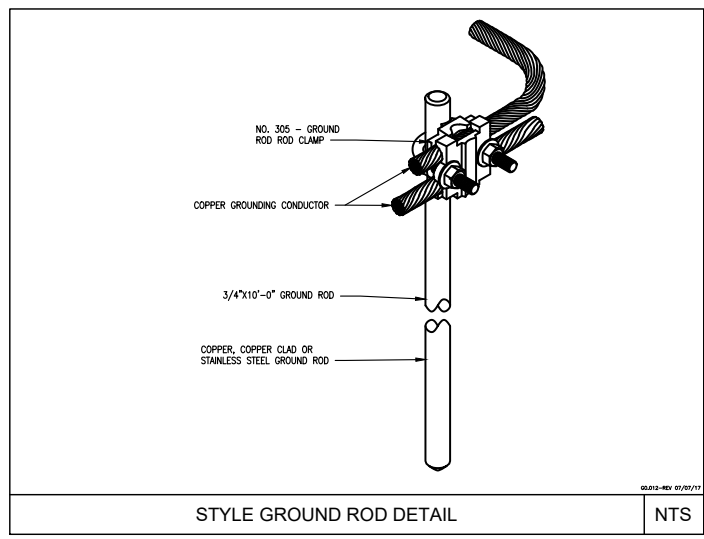
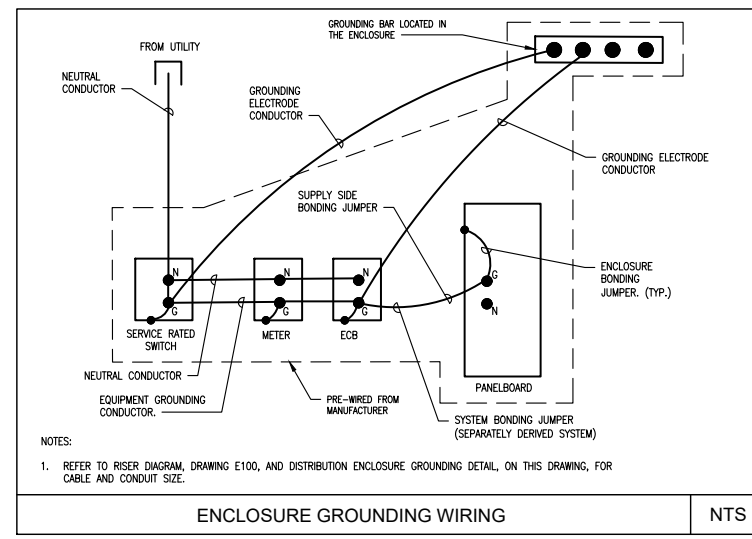
ELECTRIC VEHICLE CHARGING STATIONS

SHEET TITLE
ELECTRICAL DETAILS SHEET 5

SHEET NUMBER
E-7

EACH BLOCK REPRESENTS ONE FOOT IN THE SCALE INDICATED

DATE	DESCRIPTION	REV.



IT IS A VIOLATION OF THE LAW FOR ANY PERSON, UNLESS THEY ARE ACTING UNDER THE DIRECTION OF A LICENSED PROFESSIONAL ENGINEER, TO ALTER THIS DOCUMENT

GENERAL CONSTRUCTION NOTES:

1. ALL WORK SHALL CONFORM TO THE REQUIREMENTS OF THE LOCAL BUILDING CODE, THE LATEST ADOPTED EDITION AND ALL OTHER APPLICABLE CODES AND ORDINANCES.
2. CONTRACTOR SHALL CONSTRUCT SITE IN ACCORDANCE WITH THESE DRAWINGS AND LATEST EVERSOURCE CONSTRUCTION STANDARDS. THE SPECIFICATION IS THE RULING DOCUMENT AND ANY DISCREPANCIES BETWEEN THE SPECIFICATION AND THE CONSTRUCTION DRAWINGS SHALL BE BROUGHT TO THE ATTENTION OF THE ARCHITECT/ENGINEER OR EVERSOURCE CM PRIOR TO THE COMMENCEMENT OF WORK.
3. CONTRACTOR SHALL VISIT THE JOB SITE AND SHALL FAMILIARIZE THEMSELVES WITH ALL CONDITIONS AFFECTING THE PROPOSED WORK AND SHALL MAKE PROVISIONS AS TO THE COST THEREOF. CONTRACTOR SHALL BE RESPONSIBLE FOR FAMILIARIZING THEMSELVES WITH ALL CONTRACT DOCUMENTS, FIELD CONDITIONS AND DIMENSIONS AND CONFIRMING THAT THE WORK MAY BE ACCOMPLISHED, AS SHOWN, PRIOR TO PROCEEDING WITH CONSTRUCTION. ANY DISCREPANCIES SHALL BE BROUGHT TO THE ATTENTION OF THE ARCHITECT/ENGINEER OR EVERSOURCE CM PRIOR TO THE COMMENCEMENT OF WORK. NO COMPENSATION WILL BE AWARDED BASED ON CLAIM OF LACK OF KNOWLEDGE OF FIELD CONDITIONS.
4. IT IS NOT THE INTENT OF THESE PLANS TO SHOW EVERY MINOR DETAIL OF CONSTRUCTION. CONTRACTOR IS REQUIRED TO FURNISH AND INSTALL ANY/ALL ITEMS FOR A COMPLETE AND FULLY FUNCTIONAL SYSTEM SUBJECT ONLY TO OWNER-SUPPLIED ITEMS. CONTRACTOR SHALL PROVIDE ANY/ALL REQUIREMENTS FOR THE EQUIPMENT TO BE PLACED IN PROPER WORKING ORDER.
5. PLANS ARE NOT TO BE SCALED. THESE PLANS ARE INTENDED TO BE A DIAGRAMMATIC OUTLINE ONLY UNLESS OTHERWISE NOTED. THE WORK SHALL INCLUDE FURNISHING MATERIALS, EQUIPMENT AND APPURTENANCE, AND LABOR NECESSARY TO EFFECT ALL INSTALLATIONS AS INDICATED ON THE DRAWINGS.
6. DIMENSIONS SHOWN ARE TO FINISH SURFACES UNLESS OTHERWISE NOTED. SPACING BETWEEN EQUIPMENTS IS REQUIRED CLEARANCE. THEREFORE, IT IS CRITICAL TO FIELD VERIFY DIMENSIONS. SHOULD THERE BE ANY QUESTIONS REGARDING THE CONTRACT DOCUMENTS, EXISTING CONDITIONS AND/OR DESIGN INTENT, THE CONTRACTOR SHALL BE RESPONSIBLE FOR REPORTING ANY DISCREPANCIES TO THE ATTENTION TO THE EVERSOURCE CM, IN WRITING, PRIOR TO THE COMMENCEMENT OF WORK.
7. DETAILS PROVIDED ARE FOR THE PURPOSE OF SHOWING DESIGN INTENT. MODIFICATIONS MAY BE REQUIRED TO SUIT JOB DIMENSIONS OR SITE CONDITIONS, AND SUCH MODIFICATIONS SHALL BE INCLUDED AS PART OF THE WORK.
8. CONTRACTOR SHALL PAY FOR APPLICABLE PERMITS, FEES, INSPECTIONS AND TESTING. CONTRACTOR IS TO OBTAIN PERMITS AND APPROVED SUBMITTALS PRIOR TO ORDERING MATERIALS AND THE COMMENCEMENT OF WORK.
9. THE TERM "PROVIDE" USED IN CONSTRUCTION DOCUMENTS AND SPECIFICATIONS, INDICATES THAT THE CONTRACTOR SHALL FURNISH AND INSTALL.
10. CONTRACTOR SHALL RECEIVE CLARIFICATION IN WRITING, AND SHALL RECEIVE IN WRITING AUTHORIZATION TO PROCEED BEFORE STARTING WORK ON ANY ITEMS NOT CLEARLY DEFINED OR IDENTIFIED BY THE CONTRACT DOCUMENTS.
11. CONTRACTOR SHALL SUPERVISE AND DIRECT THE WORK USING ACCEPTED INDUSTRY-STANDARD SKILL AND ATTENTION. CONTRACTOR SHALL BE SOLELY RESPONSIBLE FOR CONSTRUCTION MEANS, METHODS, TECHNIQUES, SEQUENCES AND PROCEDURES AND FOR COORDINATING ALL PORTIONS OF THE WORK UNDER CONTRACT, UNLESS OTHERWISE NOTED.
12. CONTRACTOR SHALL BE RESPONSIBLE FOR THE SAFETY OF THE WORK AREA AND BUILDING ADJACENT AREAS OCCUPANTS THAT ARE LIKELY TO BE AFFECTED BY THE WORK UNDER THIS CONTRACT, WORK SHALL CONFORM TO ALL OSHA REQUIREMENTS.
13. CONTRACTOR SHALL COORDINATE THEIR WORK WITH THE EVERSOURCE CM AND SCHEDULE THEIR ACTIVITIES AND WORKING HOURS IN ACCORDANCE WITH THE REQUIREMENTS.
14. CONTRACTOR SHALL BE RESPONSIBLE FOR COORDINATING THEIR WORK WITH THE WORK OF OTHERS AS IT MAY RELATE TO ALL PORTIONS OF THE WORK.
15. CONTRACTOR SHALL INSTALL ALL EQUIPMENT AND MATERIALS IN ACCORDANCE WITH MANUFACTURERS RECOMMENDATIONS UNLESS SPECIFICALLY OTHERWISE INDICATED OR WHERE LOCAL CODES OR REGULATIONS TAKE PRECEDENCE.
16. CONTRACTOR SHALL MAKE NECESSARY PROVISIONS TO PROTECT EXISTING SURFACES, EQUIPMENT, IMPROVEMENTS, PIPING ETC. AND IMMEDIATE REPAIR, TO NEW CONDITION, ANY DAMAGE THAT OCCURS DURING CONSTRUCTION AT THE SOLE COST OF THE CONTRACTOR.
17. IN DRILLING HOLES, OR CORING, INTO CONCRETE WHETHER FOR FASTENING OR ANCHORING PURPOSES, OR PENETRATIONS THROUGH THE FLOOR FOR CONDUIT RUNS, PIPE RUNS ETC. MUST BE CLEARLY UNDERSTOOD THAT REINFORCING STEEL SHALL NOT BE DRILLED INTO, CUT OR DAMAGED UNDER ANY CIRCUMSTANCES (UNLESS NOTED OTHERWISE). LOCATIONS OF REINFORCING STEELS ARE NOT DEFINITELY KNOWN AND THEREFORE MUST BE LOCATED BY THE CONTRACTOR USING APPROPRIATE METHODS AND EQUIPMENT PRIOR TO ANY DRILLING OR CORING OPERATIONS IN EXISTING CONCRETE.
18. CONTRACTOR SHALL REPAIR, TO NEW CONDITION, ALL EXISTING WALL SURFACES DAMAGED DURING CONSTRUCTION SUCH THAT THEY MATCH AND BLEND IN WITH ADJACENT SURFACES.
19. CONTRACTOR SHALL SEAL PENETRATIONS THROUGH FIRE RATED ASSEMBLIES OR MATERIALS WITH U.L. LISTED AND FIRE CODE APPROVED MATERIALS AND SYSTEMS THAT MEET OR EXCEED THE RATING OF THE ASSEMBLY IN WHICH THE NEW PENETRATION IS PLACED.
20. CONTRACTOR SHALL KEEP CONTRACT AREA CLEAN, HAZARD FREE, AND DISPOSE OF ALL DIRT, DEBRIS AND RUBBISH. EQUIPMENT NOT SPECIFIED AS REMAINING ON THE PROPERTY OF THE OWNER SHALL BE REMOVED. LEAVE PREMISES IN CLEAN CONDITION AND FREE FROM PAINT SPOTS, DUST OR SMUDGES OF ANY NATURE CONTRACTOR SHALL BE RESPONSIBLE FOR MAINTAINING ALL ITEMS UNTIL COMPLETION OF CONSTRUCTION.
21. MINIMUM BEND RADIUS OF CABLES SHALL BE IN ACCORDANCE WITH CABLE MANUFACTURERS RECOMMENDATIONS.
22. CONTRACTOR SHALL MINIMIZE DISTURBANCE TO EXISTING SITE DURING CONSTRUCTION. EROSION CONTROL MEASURES, IF REQUIRED DURING CONSTRUCTION SHALL BE IN COMFORMANCE WITH JURISDICTIONAL OR STATE AND LOCAL GUIDELINES FOR EROSION AND SEDIMENT CONTROL AND COORDINATED WITH LOCAL REGULATORY AUTHORITIES. CONTRACTOR SHALL BE RESPONSIBLE FOR MAINTENANCE OF ANY EROSION CONTROL MEASURES, RECORD-KEEPING, MONITORING, AND REPORTING TO THE OWNER AND REGULATORY AUTHORITIES.
23. ALL CONSTRUCTION WORK IS TO ADHERE TO APPLICANT'S INTEGRATED CONSTRUCTION STANDARDS UNLESS STATE OR LOCAL CODE IS MORE STRINGENT.
24. THE INTENT OF THE PLANS AND SPECIFICATION IS TO PERFORM THE CONSTRUCTION IN ACCORDANCE PER STATE BUILDING STANDARDS CODE AND STATE CODE OF REGULATIONS, SHOULD ANY CONDITIONS DEVELOP NOT COVERED BY THE APPROVED PLANS AND SPECIFICATIONS WHEREIN THE FINISHED WORK WILL NOT COMPLY PER STATE CODE OF REGULATIONS, A SCOPE OF WORK DETAILING AND SPECIFYING THE REQUIRED WORK SHALL BE SUBMITTED TO AND APPROVED BY THE JURISDICTION BEFORE PROCEEDING WITH THE WORK. A CHANGE ORDER FOR THAT SCOPE SHALL BE SUBMITTED TO THE EVERSOURCE CM PRIOR TO PROCEEDING WITH THE WORK.
25. ADEQUATE AND REQUIRED LIABILITY INSURANCE SHALL BE PROVIDED BY THE CONTRACTOR FOR PROTECTION AGAINST THE PUBLIC LOSS AND/ANY PROPERTY DAMAGE FOR THE DURATION OF THE WORK.
26. CONTRACTOR SHALL GUARANTEE ANY/ALL MATERIALS AND WORK FREE FROM DEFECTS FOR A PERIOD OF NOT LESS THAN ONE YEAR FROM DATE OF ACCEPTANCE. ANY CORRECTIVE WORK SHALL BE COMPLETED AT THE SOLE COST OF THE CONTRACTOR.

ELECTRICAL NOTES:

1. ELECTRICAL CONTRACTOR SHALL SUPPLY AND INSTALL ANY/ALL ELECTRICAL WORK INDICATED. ANY/ALL CONSTRUCTION SHALL BE IN ACCORDANCE WITH DRAWINGS AND ANY/ALL APPLICABLE SPECIFICATIONS. IF ANY PROBLEMS ARE ENCOUNTERED BY COMPLYING WITH THESE REQUIREMENTS, CONTRACTOR SHALL NOTIFY EVERSOURCE CM AS SOON AS POSSIBLE, AFTER THE DISCOVERY OF THE PROBLEMS, AND SHALL NOT PROCEED WITH THAT PORTION OF WORK, UNTIL THE EVERSOURCE CM HAS DIRECTED THE CORRECTIVE ACTION TO BE TAKEN.
2. ELECTRICAL CONTRACTOR SHALL VISIT THE JOB SITE AND FAMILIARIZE THEMSELVES WITH ANY/ALL CONDITIONS AFFECTING ELECTRICAL AND COMMUNICATION INSTALLATION AND MAKE PROVISION AS TO THE COST THEREOF ALL EXISTING CONDITION OF ELECTRICAL EQUIPMENT, ETC. THAT ARE PART OF THE FINAL SYSTEM, SHALL BE VERIFIED BY THE CONTRACTOR, PRIOR TO THE SUBMITTING OF THEIR BID. FAILURE TO COMPLY WITH THIS PARAGRAPH WILL IN NO WAY RELIEVE CONTRACTOR OF PERFORMING ALL WORK NECESSARY FOR A COMPLETE AND WORKING SYSTEM.

3. ALL WORK SHALL BE PERFORMED IN ACCORDANCE WITH THE LATEST EDITION OF THE NEC, ALL CODES AND ORDINANCES OF THE LOCAL JURISDICTION, AND POWER AND TELEPHONE COMPANIES HAVING JURISDICTION AND SHALL INCLUDE BUT ARE NOT LIMITED TO:
 - A) UL-UNDERWRITERS LABORATORIES
 - B) NEC-NATIONAL ELECTRICAL CODE
 - C) NEMA-NATIONAL ELECTRICAL MANUFACTURERS ASSOCIATION
 - D) OSHA-OCCUPATIONAL SAFETY AND HEALTH ACT
 - E) SBC-STANDARD BUILDING CODE
 - F) NFPA-NATIONAL FIRE PROTECTION AGENCY
 - G) ANSI-AMERICAN NATIONAL STANDARDS INSTITUTE
 - H) IEEE-INSTITUTE OF ELECTRICAL AND ELECTRONICS ENGINEERS
 - I) ASTM-AMERICAN SOCIETY FOR TESTING MATERIALS
4. REFER TO SITE PLANS AND ELEVATIONS FOR EXACT LOCATIONS OF ALL EQUIPMENT, AND CONFIRM WITH EVERSOURCE CM ANY SIZES AND LOCATIONS WHEN NEEDED.
5. EXISTING SERVICES: CONTRACTOR SHALL NOT INTERRUPT EXISTING SERVICES WITHOUT WRITTEN PERMISSION OF THE OWNER.
6. CONTRACTOR SHALL CONFIRM WITH LOCAL UTILITY COMPANY ANY/ALL REQUIREMENTS SUCH AS THE : LUG SIZE RESTRICTIONS, CONDUIT ENTRY, SIZE OF TRANSFORMERS SCHEDULED DOWNTIME FOR OWNERS' CONFIRMATION, ETC... ANY/ALL CONFLICTS SHALL BE BROUGHT TO THE ATTENTION OF THE EVERSOURCE CM, PRIOR TO BEGINNING ANY WORK.
7. MINIMUM WIRE SIZE SHALL BE #12 AWG, NOT INCLUDING CONTROL WIRING, UNLESS NOTED OTHERWISE. ALL CONDUCTORS SHALL BE COPPER WITH THWN INSULATION, UNLESS OTHERWISE NOTED.
8. OUTLET BOXES SHALL BE PRESSED STEEL IN DRY LOCATIONS, CAST ALLOY WITH THREADED HUBS IN WET/DAMP LOCATIONS AND SPECIAL ENCLOSURES FOR OTHER CLASSIFIED AREAS.
9. IT IS NOT THE INTENT OF THESE PLANS TO SHOW EVERY MINOR DETAIL OF THE CONSTRUCTION. CONTRACTOR IS EXPECTED TO FURNISH AND INSTALL ALL ITEMS FOR A COMPLETE ELECTRICAL SYSTEM AND PROVIDE ALL REQUIREMENTS FOR THE EQUIPMENT TO BE PLACED IN PROPER WORKING ORDER.
10. ELECTRICAL SYSTEM SHALL BE AS COMPLETELY AND EFFECTIVELY GROUNDED, AS REQUIRED BY SPECIFICATIONS, SET FORTH BY APPLICANT.
11. ALL WORK SHALL BE PERFORMED BY A LICENSED ELECTRICAL CONTRACTOR IN A FIRST CLASS, WORKMANLIKE MANNER. THE COMPLETED SYSTEM SHALL BE FULLY FUNCTIONAL AND SHALL BE APPROVED BY THE EVERSOURCE CM AND LOCAL JURISDICTION. ANY DEFICIENCIES SHALL BE CORRECTED BY AN ELECTRICAL CONTRACTOR AT THE SOLE COST OF THE CONTRACTOR.
12. ALL WORK SHALL BE COORDINATED WITH OWNER TRADES TO AVOID INTERFERENCE WITH THE PROGRESS OF CONSTRUCTION.
13. THE CORRECTION OF ANY DEFECTS SHALL BE COMPLETED BY THE CONTRACTOR WITHOUT ANY ADDITIONAL CHARGE AND SHALL INCLUDE THE REPLACEMENT OR THE REPAIR OF ANY OTHER PHASE OF THE INSTALLATION, WHICH MAY HAVE BEEN DAMAGED THEREIN.
14. CONTRACTOR SHALL PROVIDE AND INSTALL CONDUIT, CONDUCTORS, PULL WIRES, BOXES, COVER PLATES AND DEVICES FOR ALL OUTLETS AS INDICATED.
15. DITCHING AND BACK FILL: CONTRACTOR SHALL PROVIDE FOR ALL UNDERGROUND INSTALLED CONDUIT AND/OR CABLES INCLUDING EXCAVATION AND BACKFILLING AND COMPACTION. REFER TO NOTES AND REQUIREMENTS "EXCAVATION AND BACKFILLING".
16. MATERIALS, PRODUCTS AND EQUIPMENT, INCLUDING ALL COMPONENTS THEREOF, SHALL BE NEW AND SHALL APPEAR ON THE LIST OF U.L. APPROVED ITEMS AND SHALL MEET OR EXCEED THE REQUIREMENTS OF THE NEC, NEMA AND IEC.
17. CONTRACTOR SHALL SUBMIT SHOP DRAWINGS OR MANUFACTURER'S CATALOG INFORMATION OF ANY/ALL EQUIPMENT AND ALL OTHER ELECTRICAL ITEMS FOR APPROVAL BY THE EVERSOURCE CM PRIOR TO INSTALLATION.
18. ANY CUTTING OR PATCHING DEEMED NECESSARY FOR ELECTRICAL WORK IS THE ELECTRICAL CONTRACTORS RESPONSIBILITY AND SHALL BE INCLUDED IN THE COST FOR WORK AND PERFORMED TO THE SATISFACTION OF THE EVERSOURCE CM UPON FINAL ACCEPTANCE.
19. THE ELECTRICAL CONTRACTOR SHALL LABEL ALL PANELS WITH ONLY TYPE WRITTEN DIRECTORIES. ALL ELECTRICAL WIRING SHALL BE THE RESPONSIBILITY OF THE ELECTRICAL CONTRACTOR.
20. DISCONNECT SWITCHES SHALL BE UL-RATED, H.P. RATED, H.P. RATED HEAVY-DUTY, QUICK-MAKE AND QUICK-BREAK ENCLOSURES, AS REQUIRED BY EXPOSURE TYPE.
21. ALL CONNECTIONS SHALL BE MADE WITH A PROTECTIVE COATING OF AN ANTI-OXIDE COMPOUND KNOWN AS "NO-OXIDE A" BY DEARBORNE CHEMICAL COMPANY. COAT ALL WIRE SURFACES BEFORE CONNECTING. EXPOSED COPPER SURFACES, INCLUDING GROUND BARS, SHALL BE TREATED-NO SUBSTITUTIONS.



1 Westinghouse Plaza,
Suite D6, Boston,
Massachusetts, 02136
+1 617-361-6700



800 Boylston St,
Boston,
Massachusetts, 02199
+1 800-592-2000

PROJECT NO:	10-19-0005.415
DRAWN BY:	M.G.
CHECKED BY:	D.C.

REV	DATE	DESCRIPTION
0	08/02/2022	ISSUED FOR REVIEW

IT IS A VIOLATION OF THE LAW FOR ANY PERSON, UNLESS THEY ARE ACTING UNDER THE DIRECTION OF A LICENSED PROFESSIONAL ENGINEER, TO ALTER THIS DOCUMENT

TOWN OF CHILMARK, 520
SOUTH ROAD, CHILMARK,
MA 02535

ELECTRIC VEHICLE
CHARGING STATIONS

SHEET TITLE

GENERAL NOTES

SHEET NUMBER

GN-1

ELECTRICAL NOTES CONT'D:

1. RACEWAYS: CONDUIT SHALL BE SCHEDULE 40/80 PVC MEETING OR EXCEEDING NEMA TC2 - 1990. CONTRACTOR SHALL PLUG AND CAP EACH END OF SPARE AND EMPTY CONDUITS AND PROVIDE TWO SEPARATE PULL STRINGS - 200 LBS TEST POLYETHYLENE CORD. ALL CONDUIT BENDS SHALL BE A MINIMUM OF 2 FT. RADIUS. RGS FITTINGS SHALL BE SUITABLE FOR USE WITH THREADED RIDGED CONDUIT. COAT ALL THREADS WITH "BRITE ZINC" OR "COLD GALV."
2. SUPPORT OF ALL ELECTRICAL WORK SHALL BE AS REQUIRED BY NEC.
3. CONDUCTORS: CONTRACTOR SHALL USE 98% CONDUCTIVITY COPPER WITH TYPE THWN INSULATION, UNLESS OTHERWISE NOTED, 600 VOLT, COLOR CODED. USE SOLID CONDUCTORS FOR WIRE UP TO AND INCLUDING NO. 8 AWG. USE STANDARD CONDUCTORS FOR WIRE ABOVE NO. 8 AWG.
4. CONNECTORS FOR POWER CONDUCTORS: CONTRACTOR SHALL USE PRESSURE TYPE INSULATED TWIST-ON CONNECTORS FOR NO. 10 AWG AND SMALLER. USE SOLDERLESS MECHANICAL TERMINAL LUGS FOR NO. 8 AWG LARGER.
5. SERVICE: AS SPECIFIED ON THE DRAWINGS, OWNER OR OWNER'S AGENT WILL APPLY FOR POWER. ALL PROVISIONS FOR TEMPORARY POWER WILL BE OBTAINED BY THE CONTRACTOR.
6. TELEPHONE OR FIBRE SERVICE: CONTRACTOR SHALL PROVIDE EMPTY CONDUITS WITH PULL STRINGS AS INDICATED ON DRAWINGS.
7. ELECTRICAL AND TELCO/FIBRE RACEWAYS TO BE BURIED A MINIMUM DEPTH OF 30", UNLESS OTHERWISE NOTED.
8. CONTRACTOR SHALL PLACE 6" WIDE DETECTABLE WARNING TAPE AT A DEPTH OF 6" BELOW GROUND AND DIRECTLY ABOVE ELECTRICAL AND TELCO SERVICE CONDUITS. CAUTIONS TAPE TO READ "CAUTION BURIED ELECTRIC" OR BURIED TELECOMM".
9. ALL BOLTS SHALL BE 3-16 STAINLESS STEEL.

GROUNDING NOTES:

1. ALL HARDWARE SHALL BE 3-16 STAINLESS STEEL, INCLUDING LOCK WASHERS. COAT ALL SURFACES WITH AN ANTI-OXIDANT COMPOUND, AS SPECIFIED, BEFORE MATING. ALL HARDWARE SHALL BE STAINLESS STEEL 3/8 INCH DIAMETER OR LARGER.
2. FOR GROUND BOND TO STEEL ONLY: INSERT A CADMIUM FLAT WASHER BETWEEN LUG AND STEEL, COAT ALL SURFACES WITH AN ANTI-OXIDANT COMPOUND BEFORE MATING.
3. ALL STEEL CONDUIT SHALL BE BONDED AT BOTH ENDS WITH GROUNDING BUSHING.
4. ALL ELECTRICAL AND GROUNDING AT THE POLE SITE SHALL COMPLY WITH THE NATIONAL ELECTRICAL CODE (NEC), NATIONAL FIRE PROTECTION ASSOCIATION (NFPA) 780 (LATEST EDITION), AND MANUFACTURER.
5. ALL DETAILS ARE SHOWN IN GENERAL TERMS. ACTUAL GROUNDING INSTALLATION AND CONSTRUCTION MAY VARY DUE TO SITE SPECIFIC CONDITIONS.
6. ALL GROUND CONNECTIONS SHALL BE #6 AWG, UNLESS OTHERWISE NOTED. ALL WIRES SHALL BE COPPER WITH THIN, UNLESS OTHERWISE NOTED. ALL GROUND WIRE SHALL BE SOLID TIM COATED OR STRANDED GREEN INSULATED WIRE.
7. CONTRACTOR TO VERIFY AND TEST GROUND TO SOURCE, 10 OHMS MAXIMUM. PROVIDE SUPPLEMENT GROUNDING RODS AS REQUIRED TO ACHIEVE SPECIFIED OHMS READING. GROUNDING AND OTHER OPTIONAL TESTING WILL BE WITNESSED BY THE EVERSOURCE CM.
8. NOTIFY ARCHITECT/ENGINEER IF THERE ARE ANY DIFFICULTIES INSTALLING GROUNDING SYSTEM DUE TO SITE SOIL CONDITIONS.
9. ALL HORIZONTALLY RUN GROUNDING CONDUCTORS SHALL BE INSTALLED A MINIMUM OF 30" BELOW GRADE/ 6" BELOW FROST-LINE IN TRENCH, UNLESS OTHERWISE NOTED. BACK FILL SHALL BE COMPACTED AS REQUIRED BY ARCHITECT/ENGINEER.
10. ALL GROUND CONDUCTORS SHALL BE RUN AS STRAIGHT AND SHORT AS POSSIBLE, WITH A MINIMUM OF 12" BENDING RADIUS NOT LESS THAN 90 DEGREES.
11. ACCEPTABLE CONDITIONS FOR GROUNDING SYSTEM SHALL BE:
 - A) BURNDY, HY-GRADE U.L. LISTED CONNECTORS FOR OUTDOOR USE OR AS APPROVED BY APPLICANT PROJECT MANAGER.
 - B) CADWELD, EXOTHERMIC WELDS (WELDED CONNECTIONS).
 - C) ONE (1) HOLE TINNED COPPER COMPRESSION (LONG BARREL) FITTINGS.
12. ALL CRIMPED CONNECTION SHALL HAVE EMBOSSED MANUFACTURER'S DIEMARK VISIBLE AT THE CRIMP (RESULTING FROM USE OF PROPER CRIMPING DEVICES) AND WEATHER-PROOFED WITH HEAT SHRINK.

13. ALL CONNECTION HARDWARE SHALL BE TYPE 3-16 STAINLESS STEEL (NOT ATTRACTED TO MAGNETS).
14. ELECTRICAL SERVICE EQUIPMENT GROUNDING SHALL COMPLY WITH NEC, ARTICLE 250-82 AND SHALL BOND ALL EXISTING AND NEW GROUNDING ELECTRODES. NEW GROUNDING ELECTRODE SHALL INCLUDE BUT NOT LIMITED TO GROUND RODS.

SITE WORK NOTES:

1. DO NOT EXCAVATE OR DISTURB BEYOND THE PROPERTY LINES OR LEASE LINES, UNLESS OTHERWISE NOTED.
2. SIZE, LOCATION AND TYPE OF ANY UNDERGROUND UTILITIES OR IMPROVEMENTS SHALL BE ACCURATELY NOTED AND PLACED ON AS-BUILD DRAWINGS BY GENERAL CONTRACTOR AND ISSUED TO ARCHITECT/ ENGINEER AT COMPLETION OF PROJECT.
3. ALL EXISTING UTILITIES, FACILITIES, CONDITIONS AND THEIR DIMENSIONS SHOWN ON PLANS HAVE BEEN PLOTTED FROM AVAILABLE RECORDS. THE ENGINEER AND OWNER ASSUME NO RESPONSIBILITY WHATSOEVER AS TO THE SUFFICIENCY OR ACCURACY OF THE INFORMATION SHOWN ON THE PLANS OR THE MANNER OF THEIR REMOVAL OR ADJUSTMENT. CONTRACTOR SHALL BE RESPONSIBLE FOR DETERMINING EXACT LOCATION OF ALL EXISTING UTILITIES AND FACILITIES PRIOR TO START OF CONSTRUCTION. CONTRACTOR SHALL ALSO OBTAIN FROM EACH UTILITY COMPANY DETAILED INFORMATION RELATIVE TO WORKING SCHEDULES AND METHODS OF REMOVING OR ADJUSTING EXISTING UTILITIES.
4. CONTRACTOR SHALL VERIFY ALL EXISTING UTILITIES BOTH HORIZONTALLY AND VERTICALLY PRIOR TO START OF CONSTRUCTION. ANY DISCREPANCIES OR DOUBTS AS TO THE INTERPRETATION OF PLANS SHALL BE IMMEDIATELY REPORTED TO THE ARCHITECT/ENGINEER OR EVERSOURCE CM FOR RESOLUTION AND INSTRUCTIONS, AND NO FURTHER WORK SHALL BE PERFORMED UNTIL THE DISCREPANCY IS CHECKED AND CORRECTED BY THE ARCHITECT/ENGINEER. FAILURE TO SECURE SUCH INSTRUCTION MEANS CONTRACTOR WILL HAVE WORKED AT THEIR OWN RISK AND EXPENSE. CONTRACTOR SHALL CALL LOCAL UTILITY LOCATE HOT LINE, SUCH AS 811, FOR UTILITY LOCATIONS A MINIMUM OF 48 HOURS PRIOR TO START OF CONSTRUCTION.
5. ALL NEW AND EXISTING STRUCTURES ON SITE AND IN AREAS TO BE DISTURBED BY CONSTRUCTION SHALL BE ADJUSTED TO FINISH ELEVATIONS PRIOR TO FINAL INSPECTION OF WORK. ANY COST RELATED TO ADJUSTING EXISTING STRUCTURES SHALL BE BORNE SOLELY BY THE CONTRACTOR.
6. GRADING OF THE SITE WORK AREA IS TO BE SMOOTH AND CONTINUOUS IN SLOPE AND IS TO FEATHER INTO EXISTING GRADES AT THE GRADING LIMITS.
7. ALL TEMPORARY EXCAVATIONS FOR THE INSTALLATION OF FOUNDATIONS, UTILITIES, ETC., SHALL BE PROPERLY LAID BACK OR BRACED IN ACCORDANCE WITH CORRECT OCCUPATIONAL SAFETY AND HEALTH ADMINISTRATION (OSHA) REQUIREMENTS.
8. STRUCTURAL FILLS SUPPORTING PAVEMENTS SHALL BE COMPACTED TO 95% OF MAXIMUM STANDARD PROCTOR DRY DENSITY, UNLESS OTHERWISE NOTED.
9. NEW GRADES NOT IN BUILDING AND DRIVEWAY IMPROVEMENT AREA TO BE ACHIEVED BY FILLING WITH APPROVED CLEAN FILL AND COMPACTED TO 95 % OF STANDARD PROCTOR DENSITY.

10. ALL FILL SHALL BE PLACED IN UNIFORM LIFTS. THE LIFTS THICKNESS SHOULD NOT EXCEED THAT WHICH CAN BE PROPERLY COMPACTED THROUGHOUT ITS ENTIRE DEPTH WITH THE EQUIPMENT AVAILABLE.
11. ANY FILLS PLACED ON EXISTING SLOPES THAT ARE STEEPER THAN 10 HORIZONTAL TO 1 VERTICAL SHALL BE PROPERLY BENCHED INTO THE EXISTING SLOPE AS DIRECTED BY GEOTECHNICAL ENGINEER.
12. CONTRACTOR SHALL CLEAN ENTIRE SITE AFTER CONSTRUCTION SUCH THAT NO DEBRIS, PAPER, TRASH, WEEDS, BRUSH, EXCESS FILL, OR ANY OTHER DEPOSITS WILL REMAIN. ALL MATERIALS COLLECTED DURING CLEANING OPERATIONS SHALL BE DISPOSED OF OFF-SITE BY THE GENERAL CONTRACTOR.
13. ALL TREES AND SHRUBS WHICH ARE NOT IN DIRECT CONFLICT WITH THE IMPROVEMENTS SHALL BE PROTECTED BY THE GENERAL CONTRACTOR.
14. ALL SITE WORK SHALL BE CAREFULLY COORDINATED BY GENERAL CONTRACTOR WITH LOCAL UTILITY COMPANY, AND ANY OTHER UTILITY COMPANIES HAVING JURISDICTION OVER THIS LOCATION.

ENVIRONMENTAL NOTES:

1. ALL WORK PERFORMED SHALL BE DONE IN ACCORDANCE WITH ISSUED PERMITS. THE CONTRACTOR SHALL BE RESPONSIBLE FOR PAYMENT OF FINES AND PROPER CLEAN UP FOR AREAS IN VIOLATION.
2. CONTRACTOR SHALL BE RESPONSIBLE FOR CONSTRUCTION AND MAINTENANCE OF EROSION AND SEDIMENTATION CONTROLS DURING CONSTRUCTION FOR PROTECTION OF ADJACENT PROPERTIES, ROADWAYS AND WATERWAYS. ALL EROSION AND SEDIMENTATION CONTROLS SHALL BE MAINTAINED IN PLACE THROUGH FINAL JURISDICTIONAL INSPECTION AND RELEASE OF SITE.
3. CONTRACTOR SHALL INSTALL/CONSTRUCT ALL NECESSARY SEDIMENT/SILT CONTROL FENCING AND PROTECTIVE MEASURES AS REQUIRED BY THE LOCAL JURISDICTION WITHIN THE LIMITS OF SITE DISTURBANCE PRIOR TO CONSTRUCTION.
4. NO SEDIMENTATION SHALL BE ALLOWED TO EXIT THE PROPERTY. THE CONTRACTOR IS RESPONSIBLE FOR TAKING ADEQUATE MEASURES FOR CONTROLLING EROSION. ADDITIONAL SEDIMENT CONTROL FENCING MAY BE REQUIRED IN ANY AREAS SUBJECT TO EROSION.
5. THE CONTRACTOR IS RESPONSIBLE FOR MAINTAINING POSITIVE DRAINAGE ON THE SITE AT ALL TIMES WITH SILT AND EROSION CONTROL MEASURES MAINTAINED ON THE DOWNSTREAM SIDE OF SITE DRAINAGE. ANY DAMAGE TO THE ADJACENT PROPERTY AS A RESULT OF EROSION WILL BE CORRECTED AT THE CONTRACTORS EXPENSE.
6. CONTRACTOR SHALL BE RESPONSIBLE FOR DAILY INSPECTIONS AND ANY REPAIRS OF ALL SEDIMENT CONTROL MEASURES INCLUDING SEDIMENT REMOVAL AS NECESSARY.
7. CLEARING OF VEGETATION AND TREE REMOVAL SHALL BE ONLY AS PERMITTED AND BE HELD TO A MINIMUM. ONLY TREES NECESSARY FOR CONSTRUCTION OF THE FACILITIES SHALL BE REMOVED.
8. SEEDING AND MULCHING AND/OR SODDING OF THE SITE WILL BE ACCOMPLISHED AS SOON AS POSSIBLE AFTER COMPLETION OF THE PROJECT FACILITIES AFFECTING LAND DISTURBANCE.
9. CONTRACTOR SHALL PROVIDE ALL EROSION AND SEDIMENTATION CONTROL MEASURES AS REQUIRED BY LOCAL, COUNTY AND STATE CODES AND ORDINANCES TO PROTECT EMBANKMENTS FROM SOIL LOSS AND TO PREVENT ACCUMULATION OF SOIL AND SILT IN STREAMS AND DRAINAGE PATHS LEAVING THE CONSTRUCTION AREA. THIS MAY INCLUDE, BUT IS NOT LIMITED TO SUCH MEASURES AS SILT FENCES, STRAW BALE SEDIMENT BARRIERS, AND CHECK DAMS.
10. RIP RAP OF SIZES INDICATED SHALL CONSIST OF CLEAN, HARD, SOUND, DURABLE, UNIFORM IN QUALITY STONE FREE OF ANY DETRIMENTAL QUANTITY OF SOFT, FRIABLE, THIN, ELONGATED OR LAMINATED PIECES, DISINTEGRATED MATERIAL, ORGANIC MATTER, OIL, ALKALI, OR OTHER DELETERIOUS SUBSTANCES.
11. GENERAL CONTRACTOR TO PLACE MATERIAL AT ALL CATCH BASINS ADJACENT TO CONSTRUCTION SITE TO PREVENT SOLID WASTE CONTAMINATION FROM ENTERING SEWER SYSTEM.



1 Westinghouse Plaza,
Suite D6, Boston,
Massachusetts, 02136
+1 617-361-6700



800 Boylston St,
Boston,
Massachusetts, 02199
+1 800-592-2000

PROJECT NO:	10-19-0005.415
DRAWN BY:	M.G.
CHECKED BY:	D.C.

REV	DATE	DESCRIPTION
0	08/02/2022	ISSUED FOR REVIEW

IT IS A VIOLATION OF THE LAW FOR ANY PERSON, UNLESS THEY ARE ACTING UNDER THE DIRECTION OF A LICENSED PROFESSIONAL ENGINEER, TO ALTER THIS DOCUMENT

TOWN OF CHILMARK, 520
SOUTH ROAD, CHILMARK,
MA 02535

ELECTRIC VEHICLE
CHARGING STATIONS

SHEET TITLE

GENERAL NOTES

SHEET NUMBER

GN-2

