



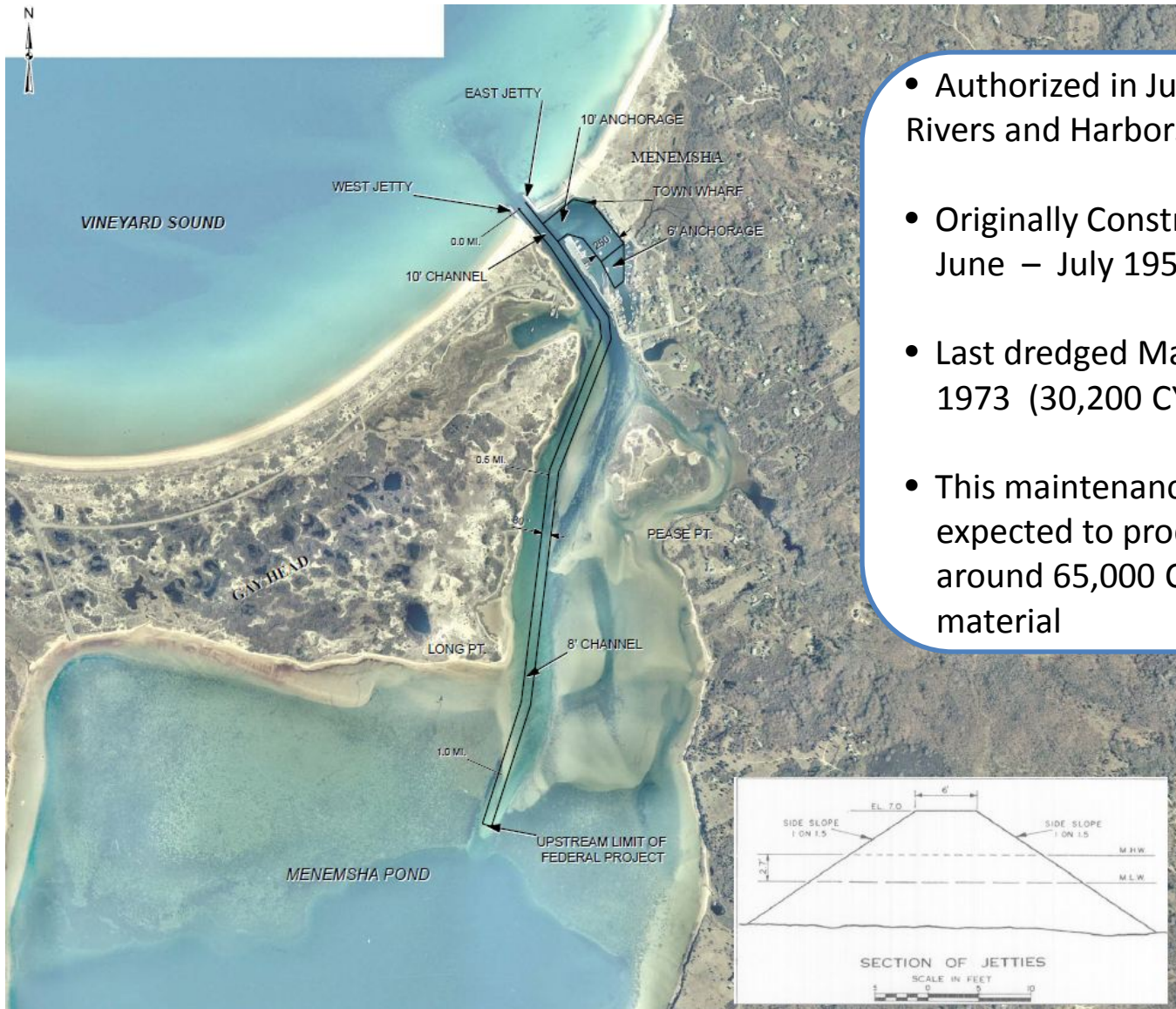
# Menemsha Federal O&M Dredging *Project Discussion*

## Agenda

- I. Introductions
- II. Federal Dredging Project Background
- III. Update on Modeling efforts undertaken by local sponsors
- IV. Dredging Project Schedule
- V. Interaction of dredging with other Federal projects (Section 206 / Jetty repair)
- VI. Discussion of dredge material placement options / associated costs if federal standard is not selected.



# Federal Project Background



- Authorized in June 1945 – Rivers and Harbors Act
- Originally Constructed in June – July 1950
- Last dredged March – July 1973 (30,200 CY)
- This maintenance event is expected to produce around 65,000 CY sandy material



US Army Corps of Engineers  
New England District

# Update on Sponsor(s) Modeling Efforts

**Answers** needed by US Army Corps to progress with project:

- Date of expected model completion. (Prelim. and/or Final)
- Determination of extent of dredging into Menemsha Pond.
- Date of consensus reached by Tribe/Towns.
- Dredge material placement location.



US Army Corps of Engineers  
New England District

# Dredge Project Schedule

Schedule Item	Date(s)	Note
Environmental Coordination	Nov 2013 – Feb 2014	
Water Quality Cert / Coastal Zone Consistency Received	End of Apr 2014	State/Fed resource agency approval of plan
Plans and Specifications	Jan 2013 – Apr 2014	Including Rights of Entry*
Plover Management Plan / Monitoring Commitment Letter*	Jan 2013 – Feb 2014	Will be required prior to completion of Environmental Coordination
Contract Solicitation Process	May 2014 – Jun 2014	
Contract Award / Notice to Proceed	End of Jul 2014	
Dredging Activities	October 1, 2014 (?)– Jan 14, 2015	Must be completed by Jan 14 due to environmental requirements

\* Denotes action on the part of the Sponsor(s)



US Army Corps of Engineers  
New England District

# Sponsor(s) Efforts on behalf of the Project

## Rights of Entry

- Help the Government identify laydown / office trailer areas for the contractor to use.
- Town property or close to project preferential.
- Army Corps District Office will prepare Rights of Entry/Easement documents for a specific period of time.
- Needs Sponsor approval (if town/tribe property).

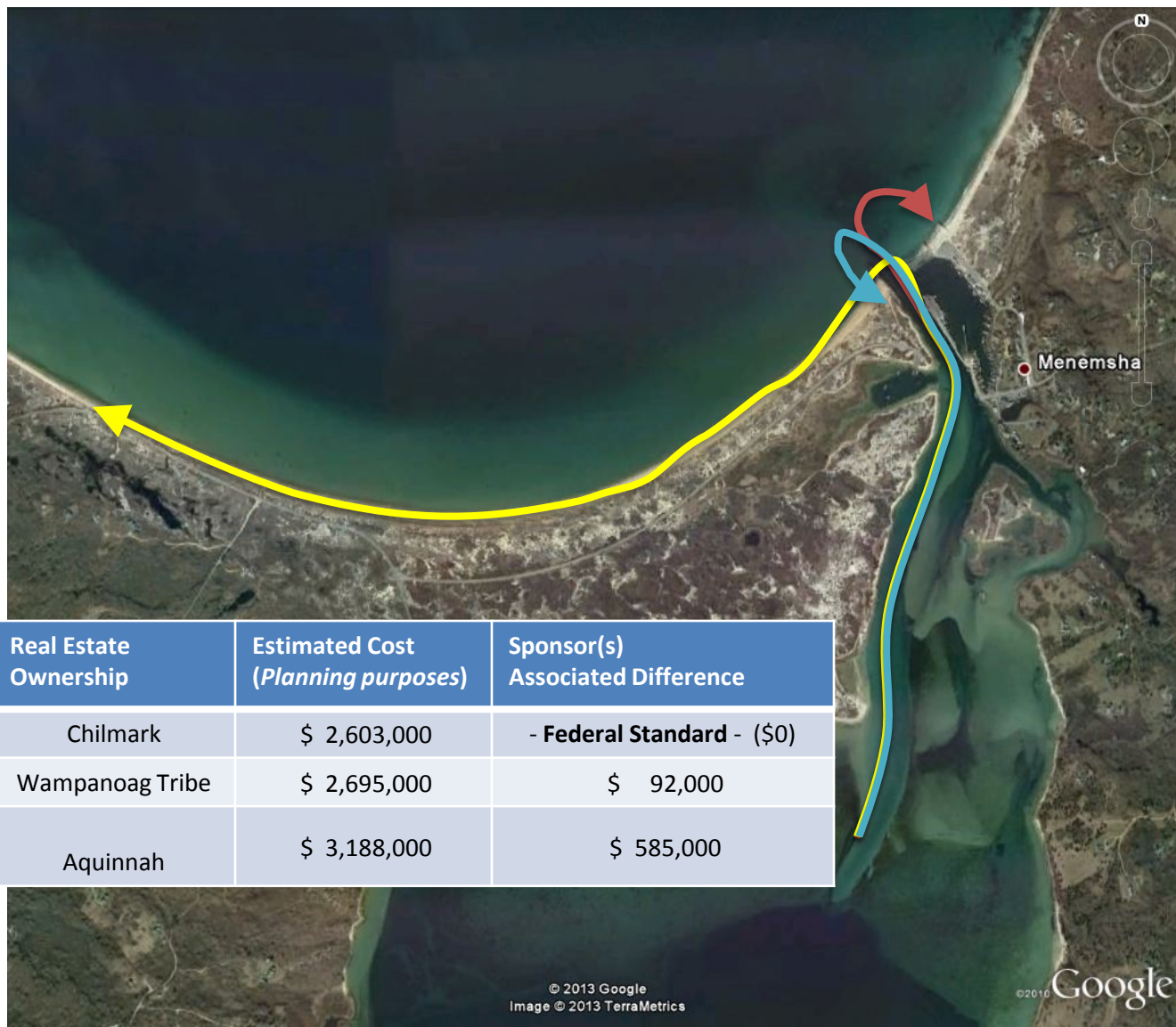
## Piping Plover Management Plan

- Requirement by the US Fish & Wildlife Service and MA DEP.
- 5-yr monitoring plan which can be undertaken by Sponsor or its representative (but not the Government).
- Instituted even though no Plovers may have used the beach previously. (Drawn by dredge material placement.)
- US Army Corps will provide example used at another Federal dredge project site.





# Dredge Material Placement Alternatives




## Placement Options

East Beach — 

Dune —

Lobsterville Rd —

 Federal Standard

Placement Location	Real Estate Ownership	Estimated Cost (Planning purposes)	Sponsor(s) Associated Difference
East Beach	Chilmark	\$ 2,603,000	- <b>Federal Standard</b> - (\$0)
Dune Restoration	Wampanoag Tribe	\$ 2,695,000	\$ 92,000
Lobsterville Rd – Coastal Protection	Aquinnah	\$ 3,188,000	\$ 585,000



US Army Corps of Engineers  
New England District